

AIRCRAFT MAINTENANCE MANUAL
INTRODUCTION - DESCRIPTION AND OPERATION

1. GENERAL

EFFECTIVITY: All

INTRO

INTENTIONALLY BLANK

AIRCRAFT MAINTENANCE MANUAL
GENERAL

TASK 32-10-02-400-801

** ON A/C 001999

Procedure

1. MLG Torque Links Installation

Subtask 32-10-02-210-001

** ON A/C 001999

- A. NOTE: Procedures for the right and left components are the same. Only the procedures for the left are given.

Subtask 32-10-02-220-002

** ON A/C 001999

- A. Prepare torque link bushings, pins and the strut for an assembly procedure.

Subtask 32-10-02-410-003

** ON A/C 001999

- A. Install the upper torque link (2) and lower torque link (7) to the strut and axle.[Ref. Figure](#)
Install link pins (1) to the upper (2) and lower (7) torque links.[Ref. Figure](#)
Install the safety wire to each slotted spring pin (3).[Ref. Figure](#)
Install the bolt (10), washer (6), nut (4) and cotter pin (5) to the torque links (2 and 7).[Ref. Figure](#)
Install the switch terminal bracket (9), bolts (8), washers (11) and nuts (12) to the lower torque link (7).[Ref. Figure](#)
Install the switch bracket (19), bolts (20), the standoff bracket (18), washers (17), nuts (15) and cotter pins (16) to the upper torque link (2).[Ref. Figure](#)
Install the clamp (14), the screw (13) and the nut (21) to the torque link standoff bracket (18).[Ref. Figure](#)

** ON A/C 001999

Subtask 32-10-01-420-004

** ON A/C 001999

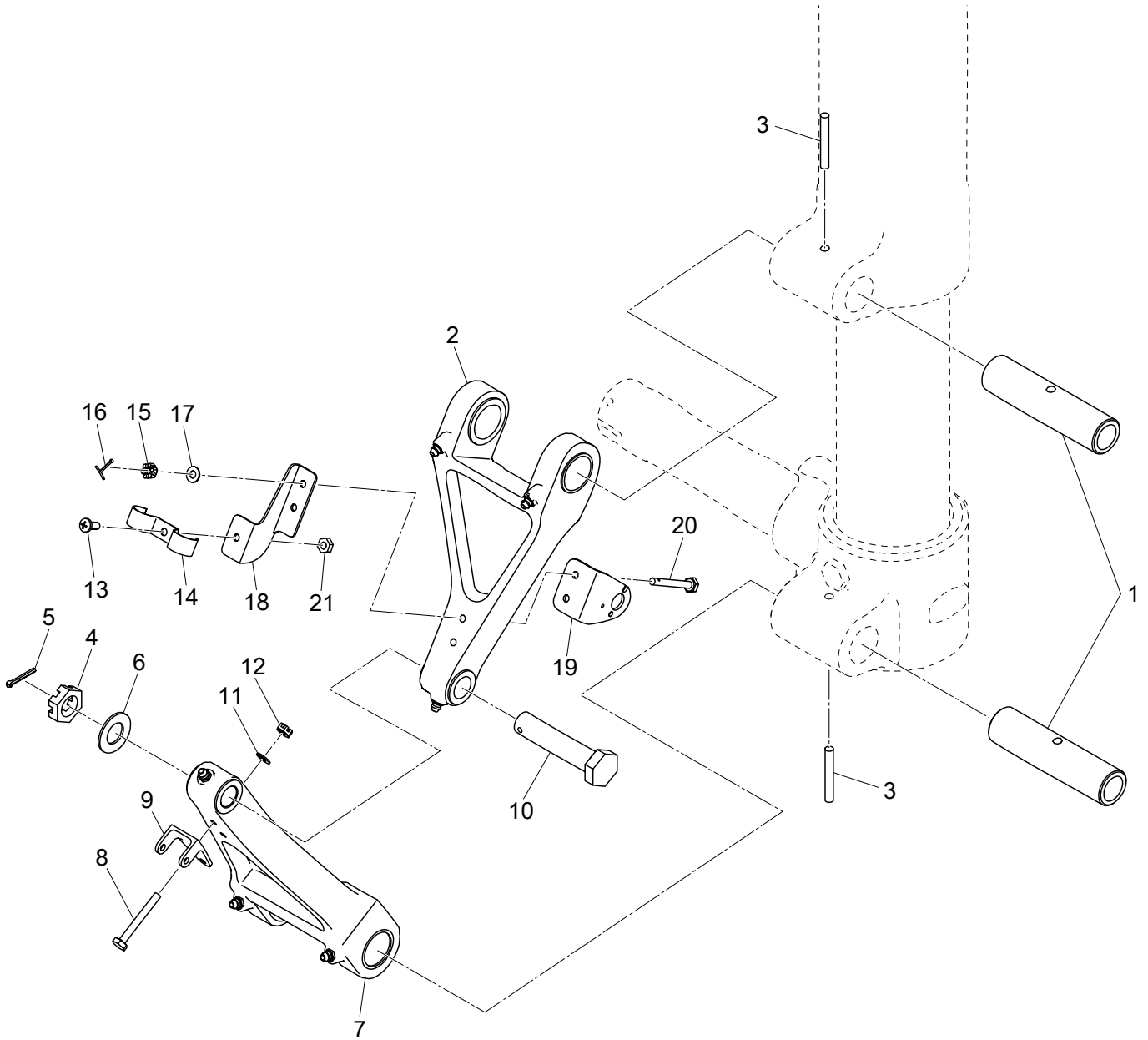
- A. Install the wheel assy.

EFFECTIVITY: 001999

32-10-02

Page 2
Dec 02/11

AIRCRAFT MAINTENANCE MANUAL



Torque Links Installation
Figure

EFFECTIVITY: 001999

32-10-02

INTENTIONALLY BLANK