

Main Landing Gear Torque Links - Install procedures

DMC: C3D-A-32-10-02-0000-720A-D

Title: Main Landing Gear Torque Links - Install procedures

Issue no: 003 new

Issue Date: 2015-01-23

Language: en/

Security classification : Class01

Responsible partner company: LBS/KA296

Originator: LBS/KA296

Applicability

QA: Unverified

Intentionally left blank

Main Landing Gear Torque Links - Install procedures

Table of Contents	Page
References.....	1
Preliminary Requirements.....	1
Procedure.....	3

List of Tables	Page
1 References.....	1
2 Required Conditions.....	1
3 Required Persons.....	2
4 Support Equipment.....	2
5 Consumables, Materials, and Expendables.....	2
6 Spares.....	2
7 Required Conditions.....	17

List of Figures	Page
1 Torque Links Installation.....	4
2 Link Pins.....	6
3 Upper Spring.....	8
4 Link Bolt.....	10
5 Switch Terminal Bracket.....	12
6 Switch Terminal and Standoff Brackets.....	14
7 Clamp.....	16

References

Table 1 References

Data Module/Technical Publication	Title
C3D-A-32-10-02-000-120A-D	Maintenance - Pre Maintenance
C3D-A-24-45-02-000-120A-D	Electrical - Pre Maintenance
C3D-A-32-00-00-0000-012A-D	Landing gear - General - General warnings and cautions and related safety data
C3D-A-32-40-03-0000-720A-D	Main Landing Gear Brakes - Install procedures

Preliminary Requirements

Required Conditions

Table 2 Required Conditions

Title	Data Module
This task must be done in a hangar or a hardened aircraft shelter	
The aircraft must be safe for maintenance	C3D-A-32-10-02-000-120A-D

Effectivity: All

C3D-A-32-10-02-0000-720A-D

UNCLASSIFIED

Title	Data Module
The aircraft must be electrically safe	C3D-A-24-45-02-000-120A-D

Required Persons

Table 3 Required Persons

Person	Category/Trade	Skill level	Trade code	Estimated time spent
Man 1	TECHAFR	Basic		2.03h

Support Equipment

Table 4 Support Equipment

Nomenclature	Identification No.	Qty	Remarks
TORQUE WRENCH	NSN : 8928- 9-992-8298 Pt. 1 No : SP80030000 NSCM: PT405		
TOOL KIT	Pt. No : TK-494DF-1 NSCM: PT405	1	

Consumables, Materials, and Expendables

Table 5 Consumables, Materials, and Expendables

Nomenclature	Identification No.	Qty	Remarks
PIN COTTER	Pt. No : BACP10AD02C09P 1 NSCM: V5282		
PIN COTTER	Pt. No : BACP20BC01D07P 1 NSCM: V5282		

Spares

Table 6 Spares

Nomenclature	Identification No.	Qty	Remarks
None			

Safety Conditions

WARNING

Review the SAFETY PRECAUTIONS section data before performing this procedure C3D-A-32-00-00-0000-012A-D .

Procedure

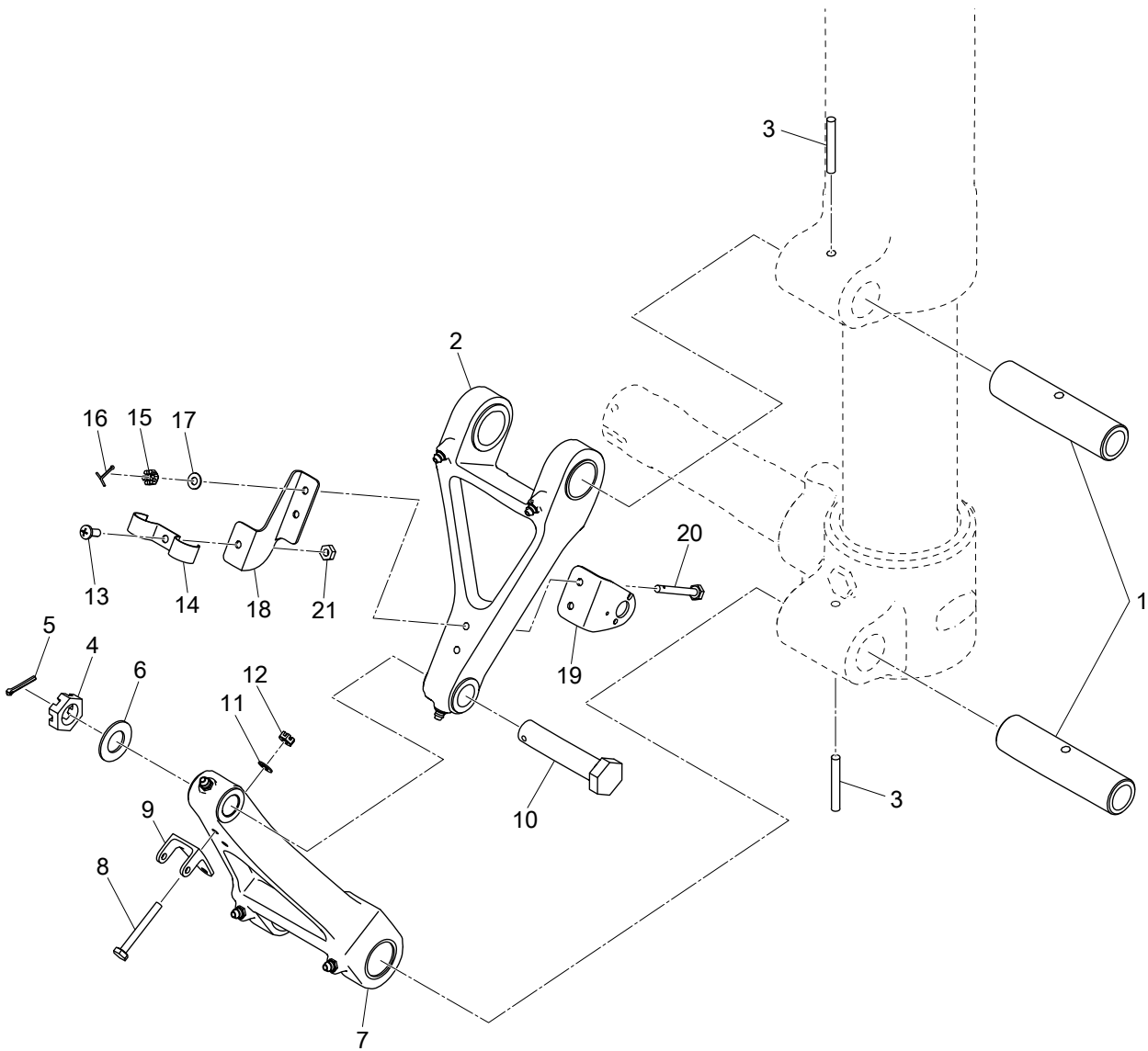
1

Note

Procedures for the right and left components are the same. Only the procedures for the left are given.

1.1

1.2 Prepare the parts.



ICN-C3D-A-321002-0-KA296-00001-A-01-1

Figure 1 Torque Links Installation

-
- 1.2.1 Prepare torque link bushings, pins and the strut for an assembly procedure.
 - 1.3 Perform the Main Landing Gear Brakes - Install procedures C3D-A-32-40-03-0000-720A-D
 - 1.3.1 Install the upper torque link (2) and lower torque link (7) to the strut and axle.
 - 1.3.2 Install link pins (1) to the upper (2) and lower (7) torque links.

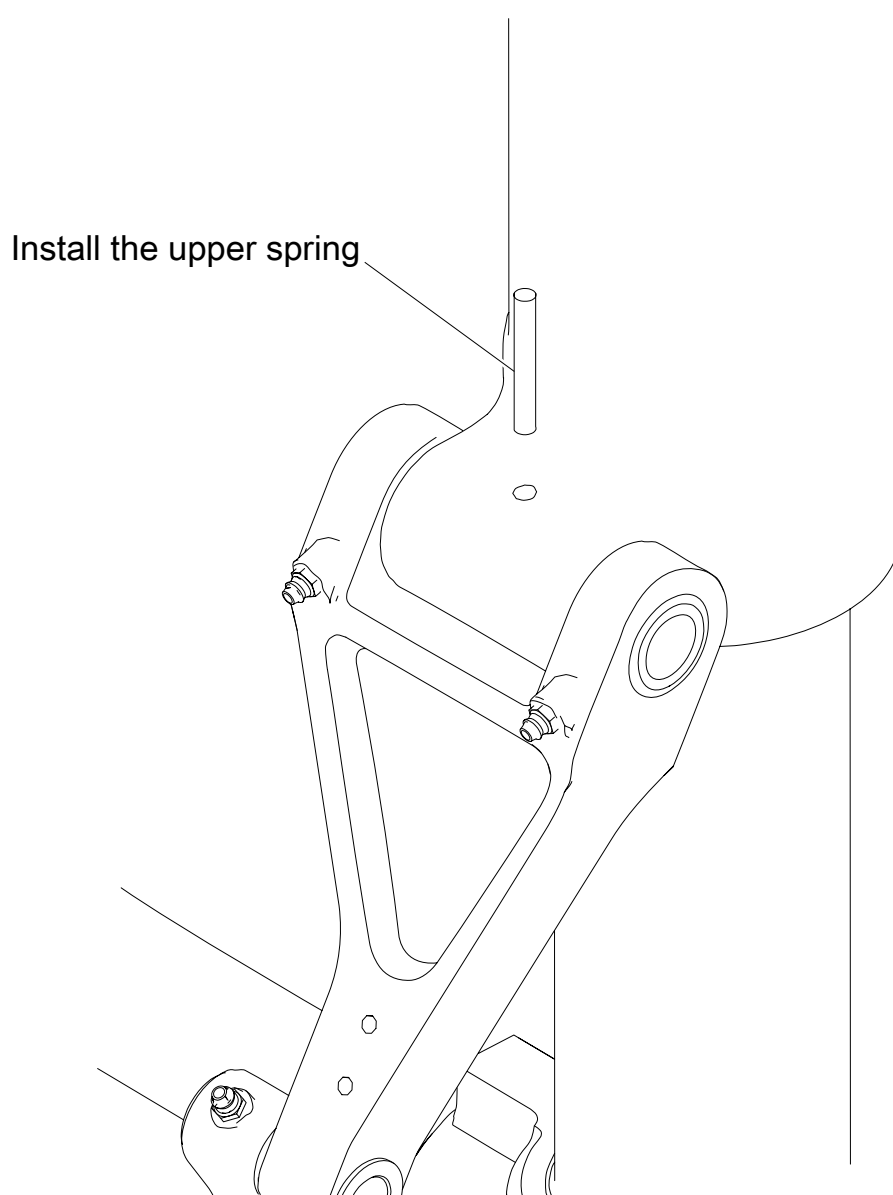


Install Link Pins

ICN-C3D-A-321002-0-KA296-00027-A-01-1

Figure 2 Link Pins

1.3.3 Install the safety wire to each slotted spring pin (3).

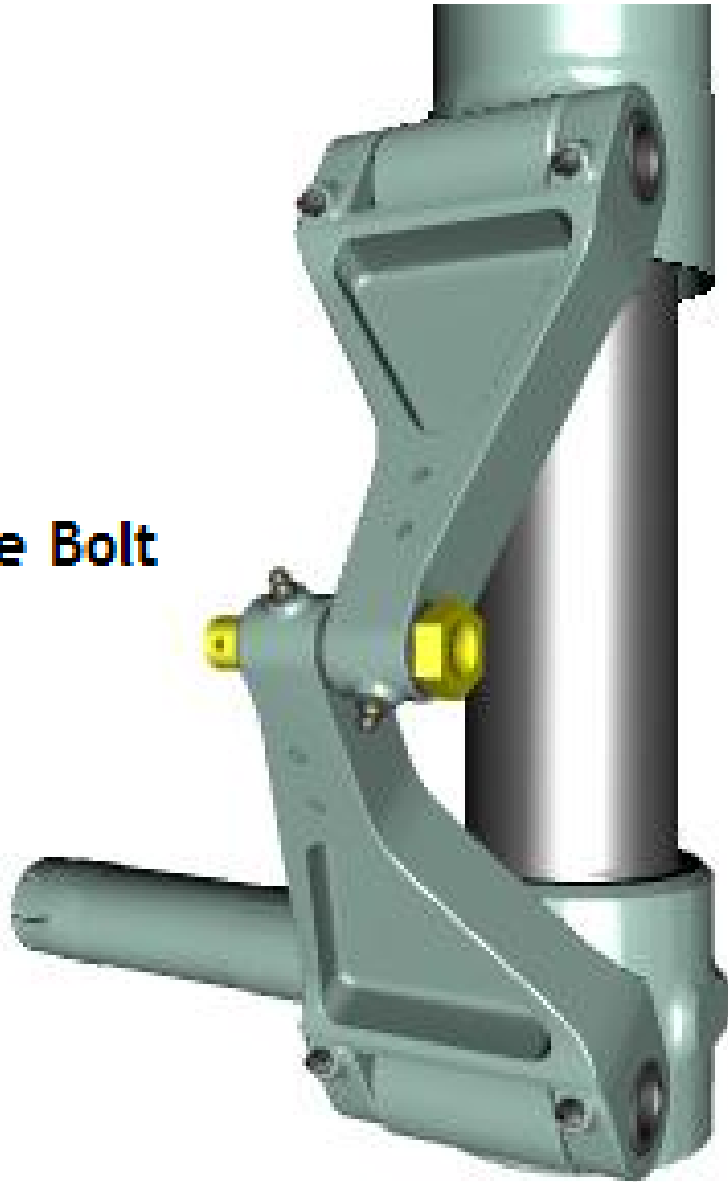


ICN-C3D-A-321002-0-KA296-00026-A-01-1

Figure 3 Upper Spring

- 1.3.4 Install the bolt (10), washer (6), nut (4) and cotter pin (5) to the torque links (2 and 7).

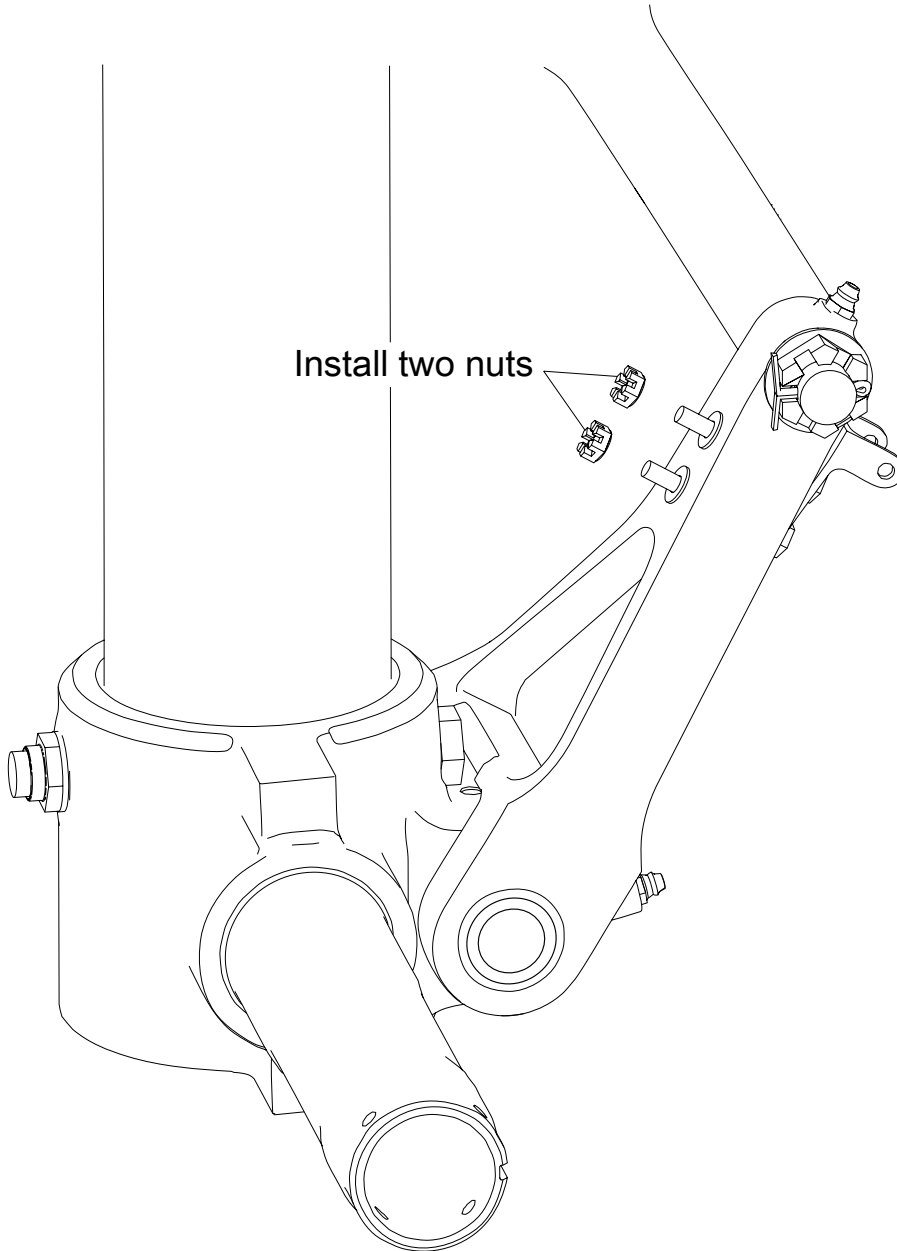
Install the Bolt



ICN-C3D-A-321002-0-KA296-00025-A-01-1

Figure 4 Link Bolt

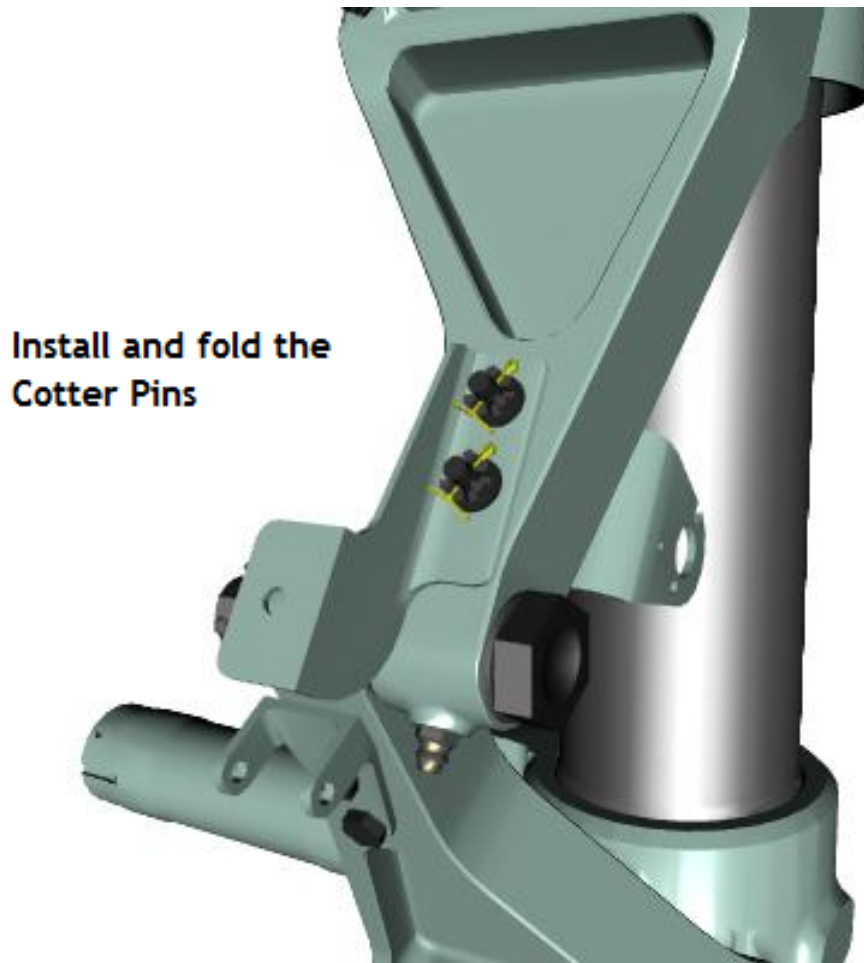
-
- 1.3.5 Install the switch terminal bracket (9), bolts (8), washers (11) and nuts (12) to the lower torque link (7).



ICN-C3D-A-321002-0-KA296-00024-A-01-1

Figure 5 Switch Terminal Bracket

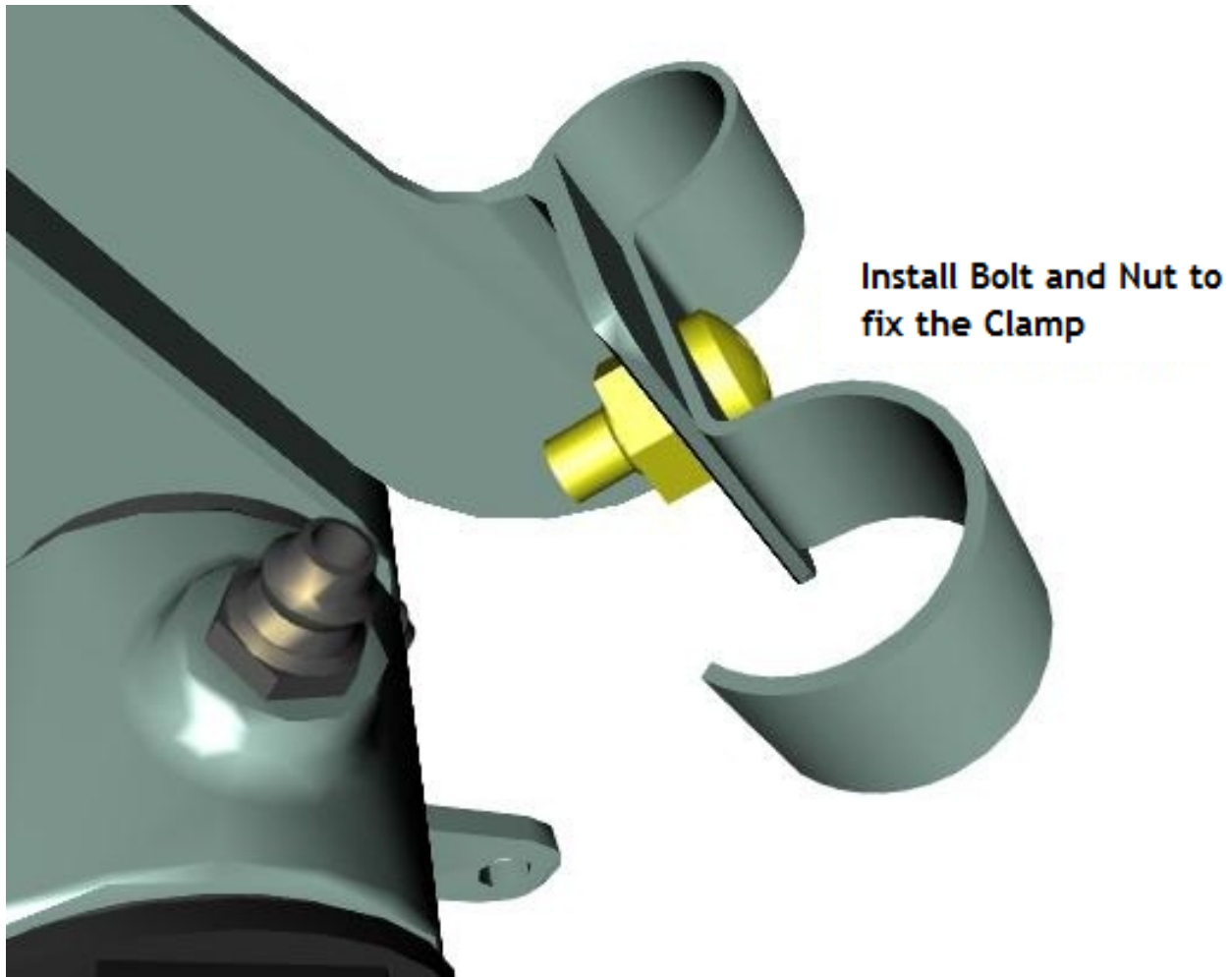
-
- 1.3.6 Install the switch bracket (19), bolts (20), the standoff bracket (18), washers (17), nuts (15) and cotter pins (16) to the upper torque link (2).



ICN-C3D-A-321002-0-KA296-00023-A-01-1

Figure 6 Switch Terminal and Standoff Brackets

-
- 1.3.7 Install the clamp (14), the screw (13) and the nut (21) to the torque link standoff bracket (18).



ICN-C3D-A-321002-0-KA296-00022-A-01-1

Figure 7 Clamp

1.4 Install the wheel assy.

Requirements after job completion

Required Conditions

Table 7 Required Conditions

Title	Data Module
None	

UNCLASSIFIED

Intentionally left blank