

Main Landing Gear Torque Links - Remove procedures

DMC: C3D-A-32-10-02-0000-520A-D

Title: Main Landing Gear Torque Links - Remove procedures

Issue no: 003 new

Issue Date: 2015-01-21

Language: en/

Security classification : Class01

Responsible partner company: LBS/KA296

Originator: LBS/KA296

Applicability

QA: Unverified

Intentionally left blank

Main Landing Gear Torque Links - Remove procedures

Table of Contents	Page
References.....	1
Preliminary Requirements.....	1
Procedure.....	3

List of Tables	Page
1 References.....	1
2 Required Conditions.....	1
3 Required Persons.....	2
4 Support Equipment.....	2
5 Consumables, Materials, and Expendables.....	2
6 Spares.....	2
7 Required Conditions.....	5

List of Figures	Page
1 Torque Links Removal.....	4

References

Table 1 References

Data Module/Technical Publication	Title
C3D-A-32-10-02-000-120A-D	Maintenance - Pre Maintenance
C3D-A-24-45-02-000-120A-D	Electrical - Pre Maintenance
C3D-A-32-00-00-0000-012A-D	Landing gear - General - General warnings and cautions and related safety data
C3D-A-32-40-03-0000-520A-D	Main Landing Gear Brakes - Remove procedures

Preliminary Requirements

Required Conditions

Table 2 Required Conditions

Title	Data Module
This task must be done in a hangar or a hardened aircraft shelter	
The aircraft must be safe for maintenance	C3D-A-32-10-02-000-120A-D
The aircraft must be electrically safe	C3D-A-24-45-02-000-120A-D

Required Persons

Table 3 Required Persons

Person	Category/Trade	Skill level	Trade code	Estimated time spent
Man 1	TECHAFR	Basic		2.03h

Support Equipment

Table 4 Support Equipment

Nomenclature	Identification No.	Qty	Remarks
TORQUE WRENCH	NSN : 8928- 9-992-8298 Pt. 1 No : SP80030000 NSCM: PT405		
TOOL KIT	Pt. No : TK-494DF-1 NSCM: PT405	1	

Consumables, Materials, and Expendables

Table 5 Consumables, Materials, and Expendables

Nomenclature	Identification No.	Qty	Remarks
PIN COTTER	Pt. No : BACP10AD02C09P 1 NSCM: V5282		
PIN COTTER	Pt. No : BACP20BC01D07P 1 NSCM: V5282		

Spares

Table 6 Spares

Nomenclature	Identification No.	Qty	Remarks
None			

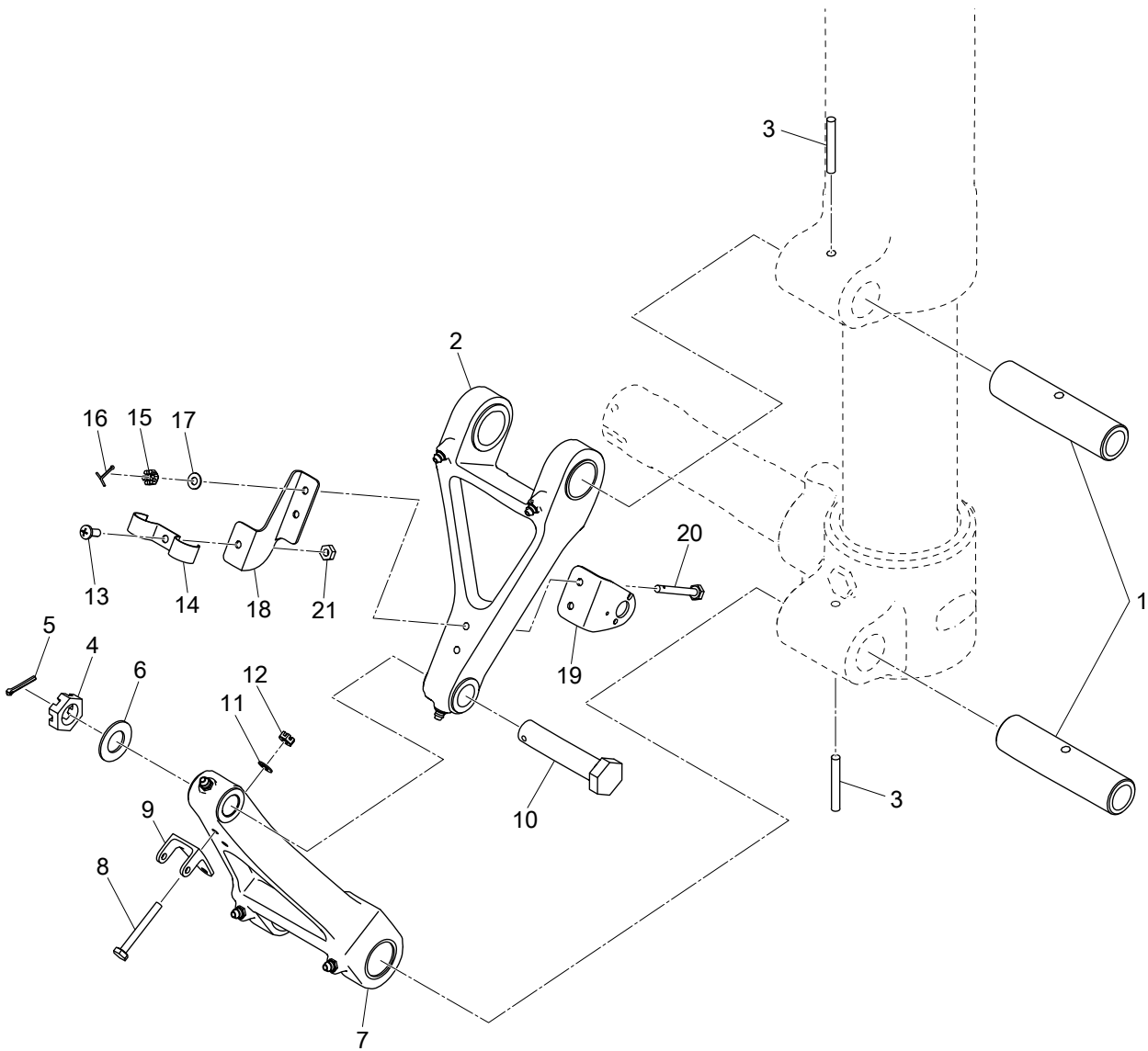
Safety Conditions

WARNING

Review the SAFETY PRECAUTIONS section data before performing this procedure C3D-A-32-00-00-0000-012A-D .

Procedure

- 1
Note
Procedures for the right and left components are the same. Only the procedures for the left are given.
- 2 Perform the Main Landing Gear Brakes - Remove procedures C3D-A-32-40-03-0000-520A-D.
- 3 Remove the upper and lower torque link from the strut (Refer to Fig.1):
 - 3.1 Remove the screw (13), clamp (14) and nut (21) from the torque link standoff bracket (18).
 - 3.2 Remove the cotter pins (16), nuts (15), washers (17), bolts (20), standoff bracket (18) and switch bracket (19) from the upper torque link (2).
 - 3.3 Remove the nuts (12), washers (11), bolts (8) and the switch terminal bracket (9) from the lower torque link (7).
 - 3.4 Remove the cotter pin (5), nut (4), washer (6) and bolt (10) from the torque links (2 and 7).
 - 3.5 Remove the safety wires from the upper and lower slotted spring pins (3). Remove the spring pins (3).
 - 3.6 Remove link pins (1) from the upper (2) and lower (7) torque links.
 - 3.7 Remove the upper torque link (2) and lower torque link (7) from the strut and axle.
- 4 Inspect the strut, pins and torque link bushings for damage.



ICN-C3D-A-321002-0-KA296-00001-A-01-1

Figure 1 Torque Links Removal

Requirements after job completion

Required Conditions

Table 7 Required Conditions

Title	Data Module
None	

Intentionally left blank