

## Pump Maintenance Instruction

### Table of contents

Page

Preliminary requirements .....	1
Procedure .....	2
Requirements after job completion .....	6

### List of figures

1	Rotors .....	4
2	Inspect the rotors .....	5

### List of tables

1	Required conditions .....	1
2	Support equipment .....	1
3	Consumables, materials and expendables .....	2
4	Spares .....	2
5	Required conditions .....	6

### *Preliminary requirements*

### Required conditions

*Table 1 Required conditions*

Action/Condition	Data module/Technical publication
None	

### Support equipment

*Table 2 Support equipment*

Name	Identification/Reference	Quantity	Remarks
Ratchet wrench	Part No 2022-03	1 EA	
Torque wrench up to 30 N*m incl.	Part No 33530-2022	1 EA	

Applicable to:  
All

**PUMP-A-73-20-03-00AA-920D-A**

Table 2 Support equipment (Continued)

Name	Identification/Reference	Quantity	Remarks
Drive Flank Socket 6pt 15mm	Part No 22405-15	1 EA	

## Consumables, materials and expendables

Table 3 Consumables, materials and expendables

Name	Identification/Reference	Quantity	Remarks
Rotor	Part No UT-35/772586-15	1 EA	

## Spares

Table 4 Spares

Name	Identification/Reference	Quantity	Remarks
Rotor	Part No SH40400	1 EA	
Rotor	Part No SH40500	1 EA	

## Safety conditions

### Note

The consumables, instruments, tools and devices applicable in this Maintenance Instruction are advisory.

## Procedure

- 1 Remove the Pump Valve Housing ([Fig 1 \[1\]](#)) using wrench 15 mm. ([Fig 1](#))
- 2 Inspect the rotors ([Fig 1 \[2\]](#), [Fig 1 \[3\]](#)) for cracks and fouling.  
Replace as appropriate using Maintenance Procedure JC0346. ([Fig 2](#))
- 3 Prior to re-installation of the Pump Valve Housing ([Fig 1 \[1\]](#)), ensure the gasket ([Fig 1 \[4\]](#)) is resealed with the correct gasket sealant. ([Fig 1](#))
- 4 Reinstall the Pump Valve Housing ([Fig 1 \[1\]](#)).

Applicable to:  
All

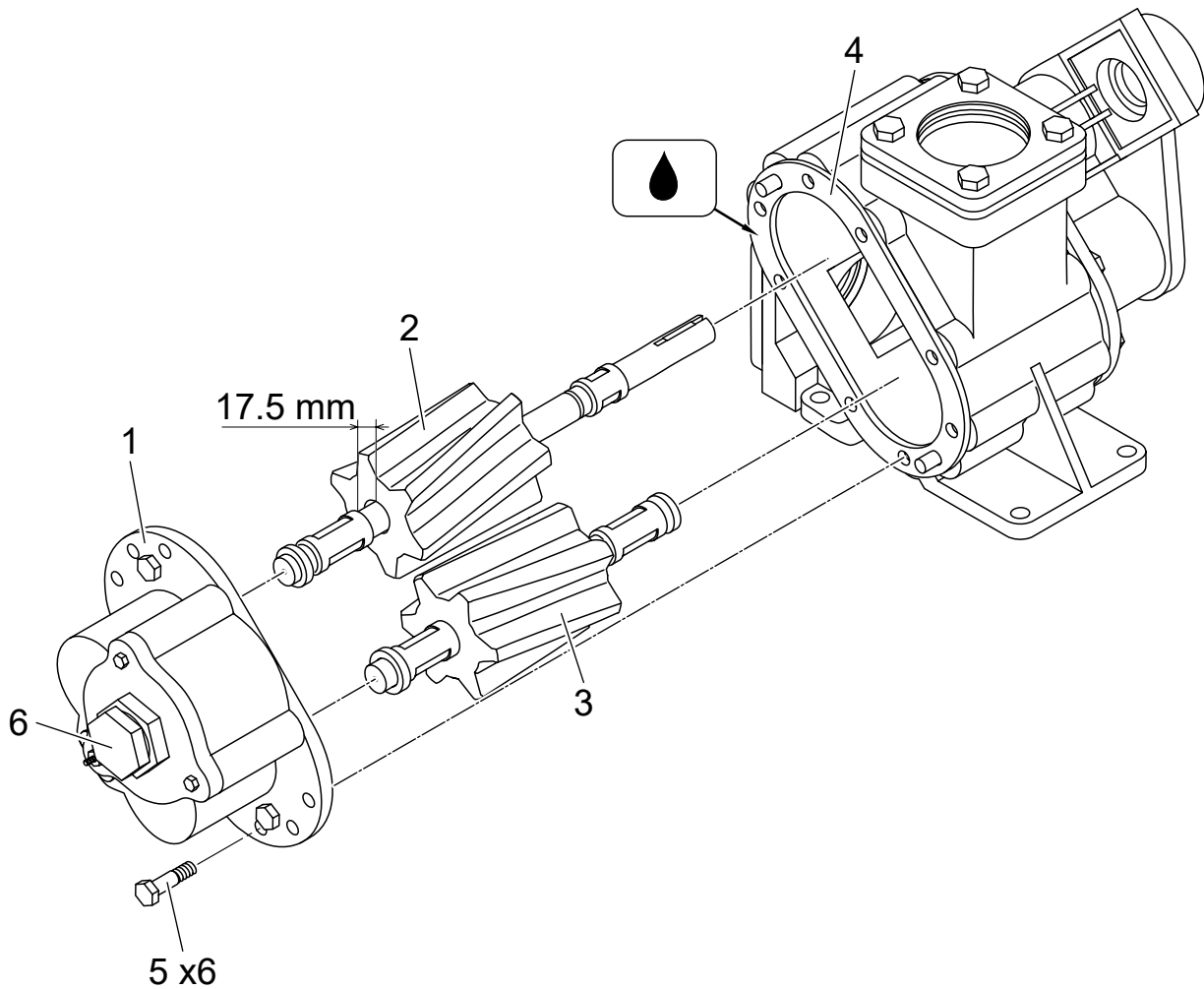
**PUMP-A-73-20-03-00AA-920D-A**

- 
- 5 Reinstall the Pump Valve. ([Fig 1](#))

**Note**

Ensure that all bolts ([Fig 1 \[5\]](#)) are tightened to 25 H·m.

- 6 Loosen the pump adjuster ([Fig 1 \[6\]](#)) by .5 turn.



ICN-PUMP-A-732003-0-00000-00003-A-001-01

Fig 1 Rotors

Applicable to:  
All

**PUMP-A-73-20-03-00AA-920D-A**



ICN-PUMP-A-732003-0-00000-00002-A-001-01  
*Fig 2 Inspect the rotors*

---

***Requirements after job completion*****Required conditions***Table 5 Required conditions*

Action/Condition	Data module/Technical publication
None	