

## Turbine-S1000D ASSEMBLY

### Table of contents

Page

Preliminary requirements .....	1
Procedure .....	2
Requirements after job completion .....	14

### List of figures

1	Turbine rotor installation .....	3
2	Combustion chamber installation .....	5
3	LPT .....	7
4	Forward sump .....	9
5	Turbine systems .....	11
6	Assembled turbine .....	13

### List of tables

1	Required conditions .....	1
2	Support equipment .....	2
3	Consumables, materials and expendables .....	2
4	Spares .....	2
5	Required conditions .....	14

### *Preliminary requirements*

### Required conditions

*Table 1 Required conditions*

Action/Condition	Data module/Technical publication
None	

## Support equipment

*Table 2 Support equipment*

Name	Identification/Reference	Quantity	Remarks
PORTAL CRANE	Part No 9850448-02	1 EA	
STAPEL	Part No S1259-001	1 EA	

## Consumables, materials and expendables

*Table 3 Consumables, materials and expendables*

Name	Identification/Reference	Quantity	Remarks
None			

## Spares

*Table 4 Spares*

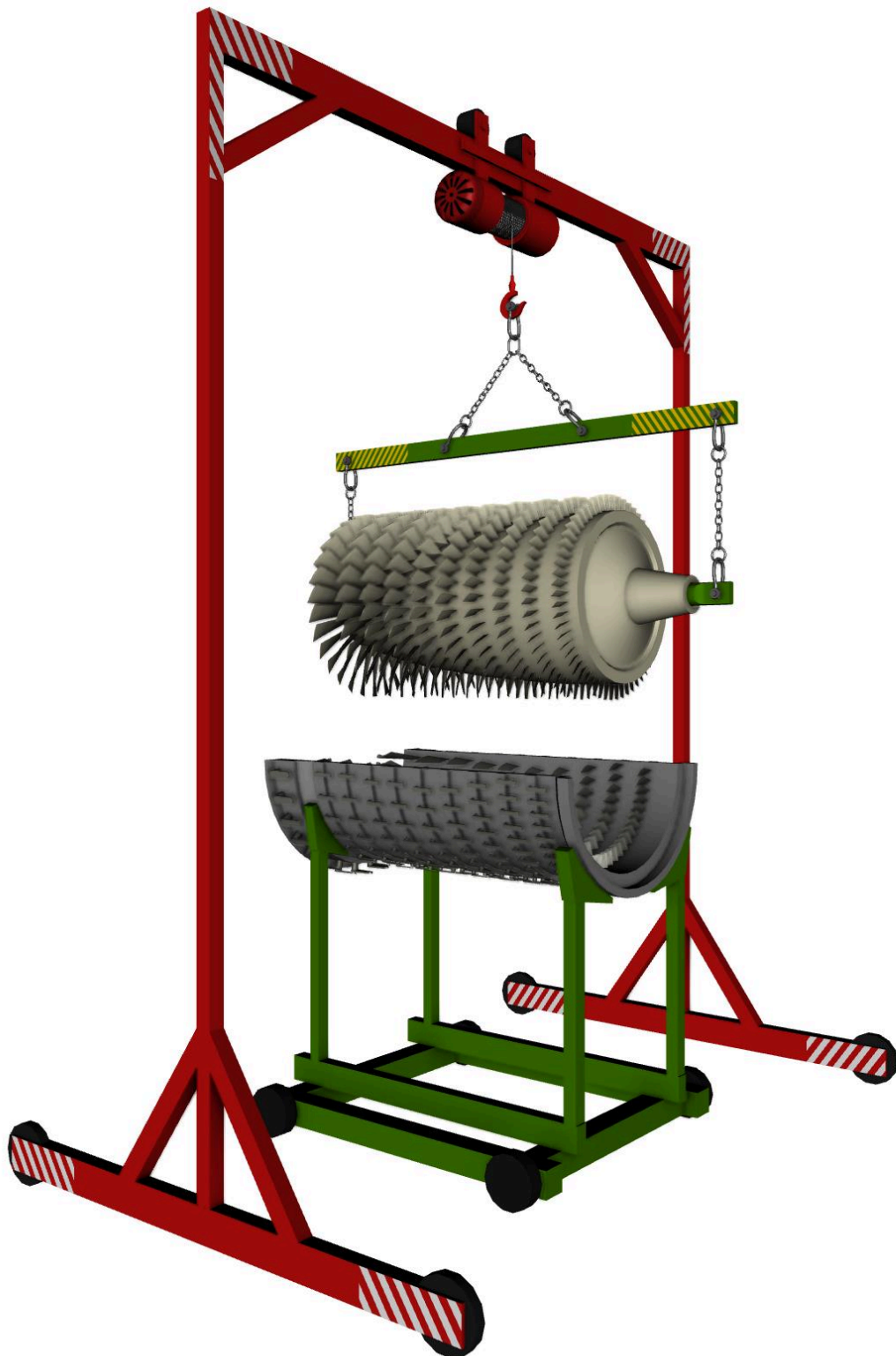
Name	Identification/Reference	Quantity	Remarks
None			

## Safety conditions

None

## Procedure

- 1 COMPRESSOR MODULE ASSEMBLY.
- 1.1 INSTALL COMPRESSOR ROTOR M-003-003.



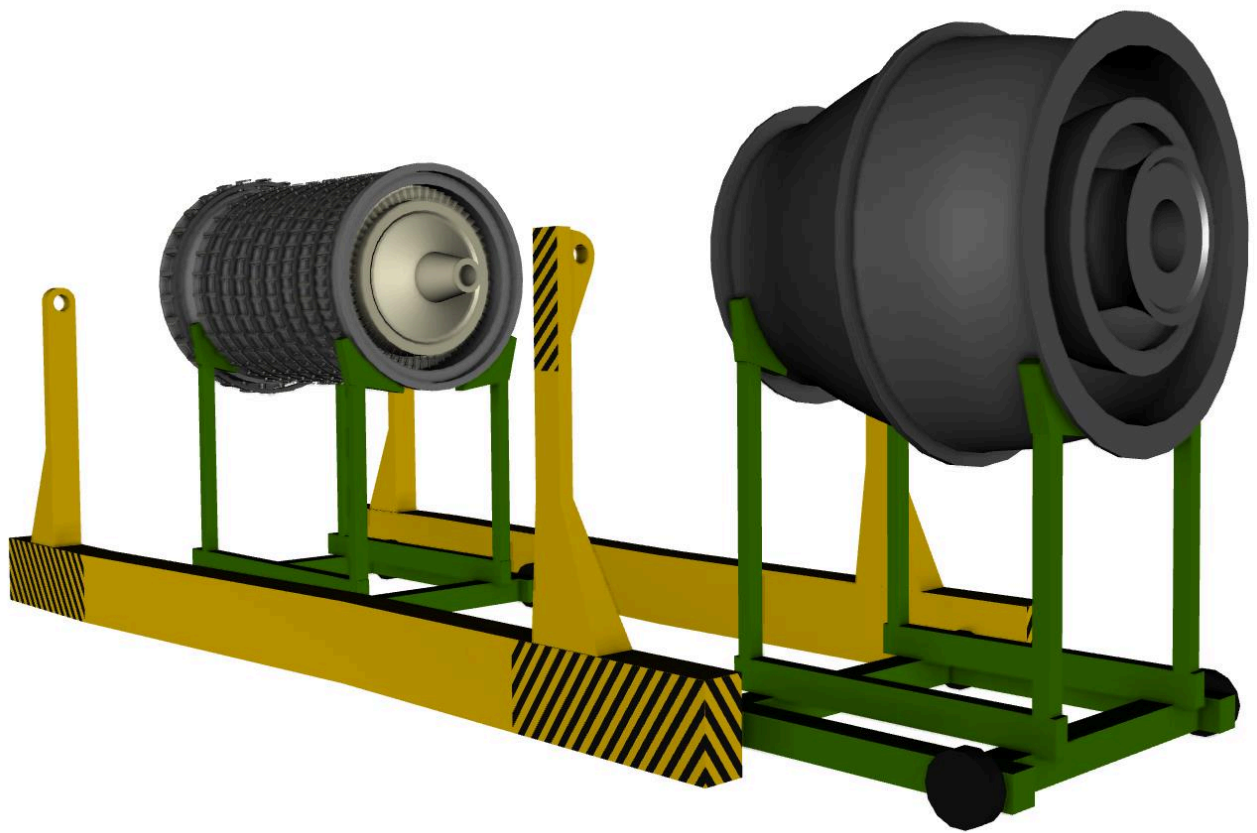
ICN-TURBINE-A-000000-0-00000-00011-A-01-1

*Fig 1 Turbine rotor installation*

Applicable to:  
All

**TURBINE-A-000-00-00-00AA-720A-A**

- 1.2       INSTALL COMPRESSOR UPPER CASE M-003-002 WITH BLADES.
- 1.3       ASSEMBLE STATOR BLADES CONTROL SYSTEM.
- 2         COMBUSTION CHAMBER ASSEMBLY.
- 2.1       ATTACH COMBUSTION CHAMBER M-004.



ICN-TURBINE-A-000000-0-00000-00012-A-01-1  
*Fig 2 Combustion chamber installation*

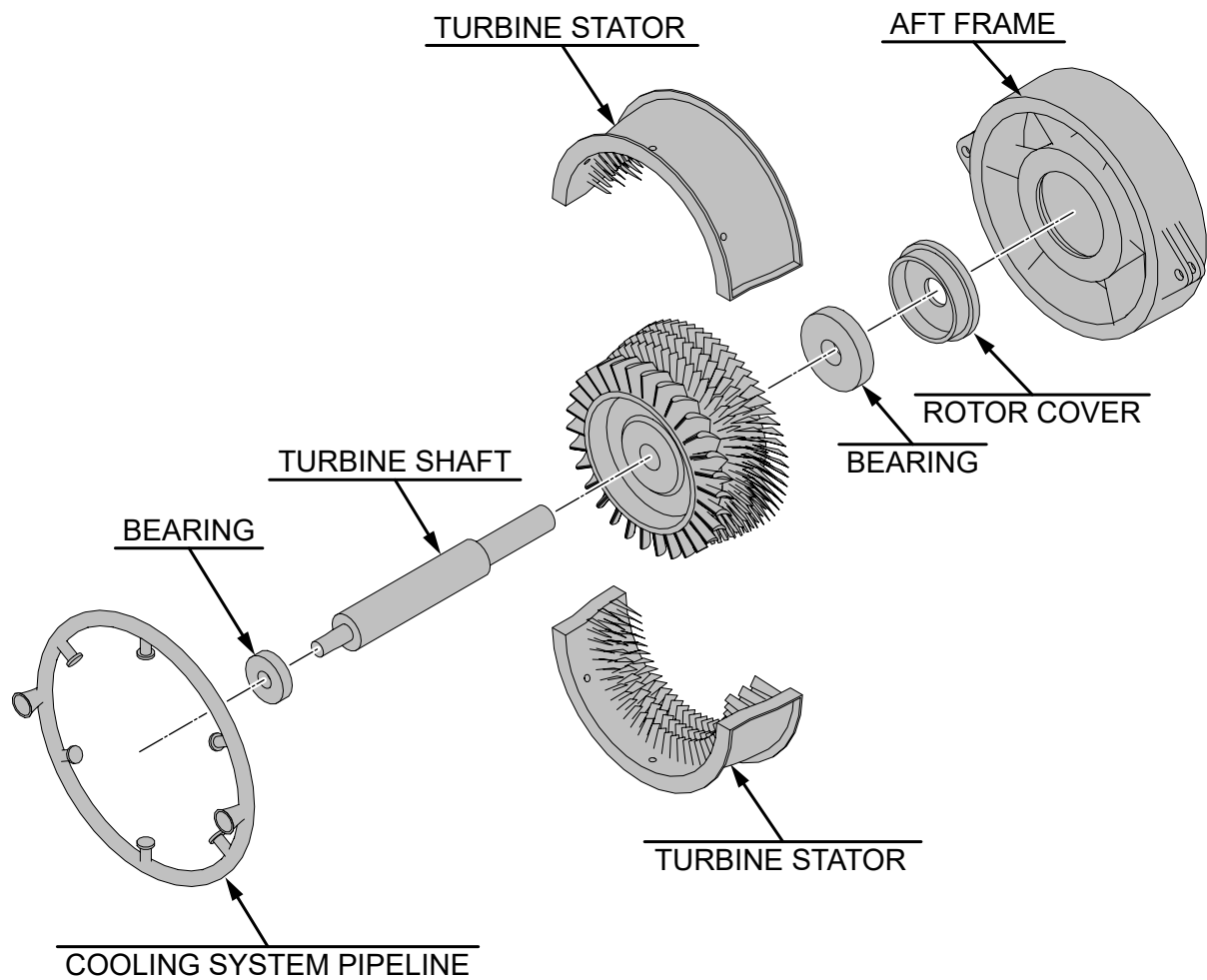
---

Applicable to:  
All

**TURBINE-A-000-00-00-00AA-720A-A**

---

3 LPT MODULE ASSEMBLY.



ICN-TURBINE-A-000000-0-00000-00013-A-01-1

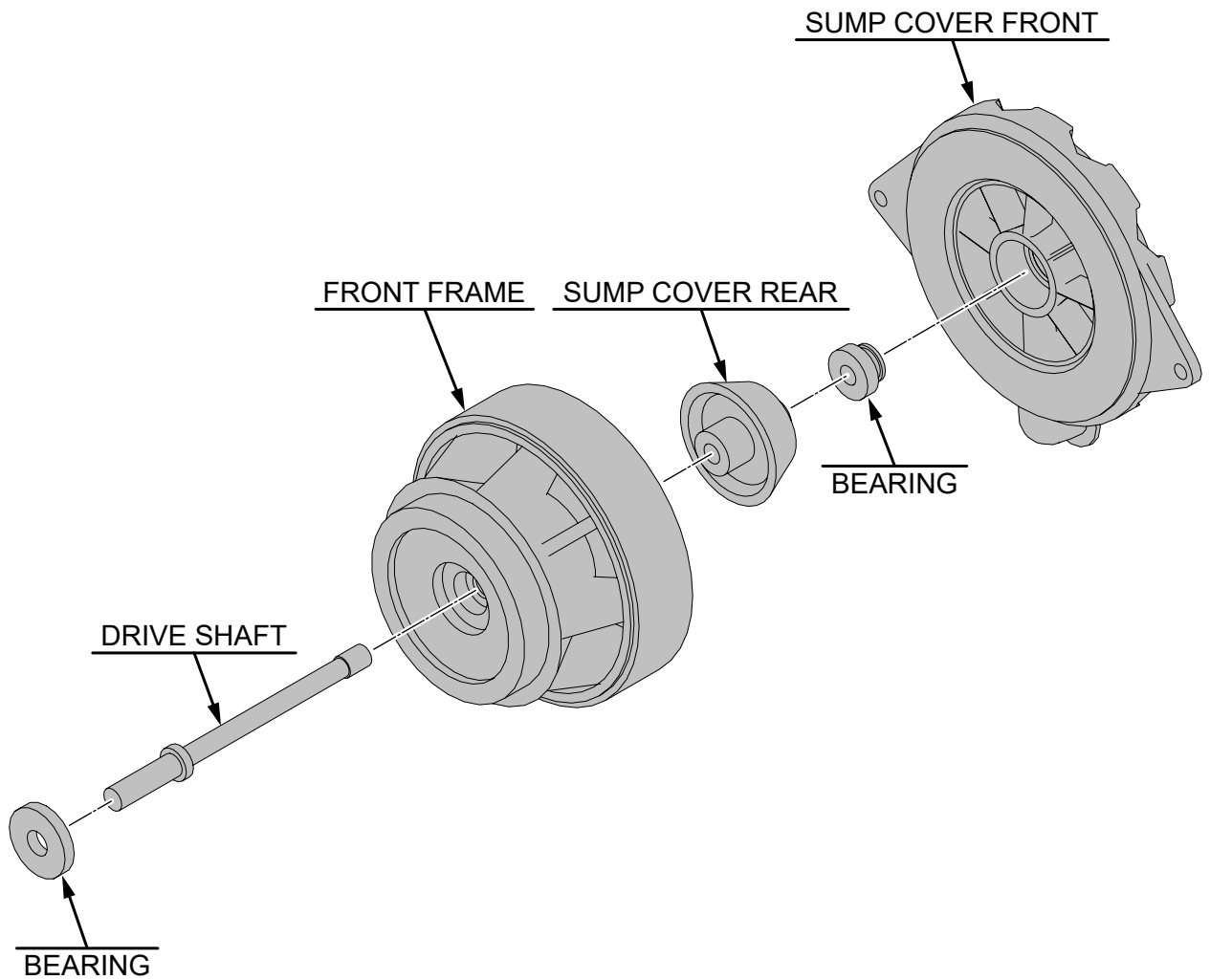
Fig 3 LPT

Applicable to:  
All

**TURBINE-A-000-00-00-00AA-720A-A**

- 
- 3.1       INSTALL LPT ROTOR M-005-001.
  
  - 3.2       INSTALL LPT UPPER CASE.
  - 3.3       ATTACH LOW PRESSURE TURBINE (LPT).
  - 3.4       ATTACH AFT FRAME M-005-003.
  - 3.5       REMOVE THE TURBINE WAY.
  - 4         FORWARD SUMP ASSEMBLY.



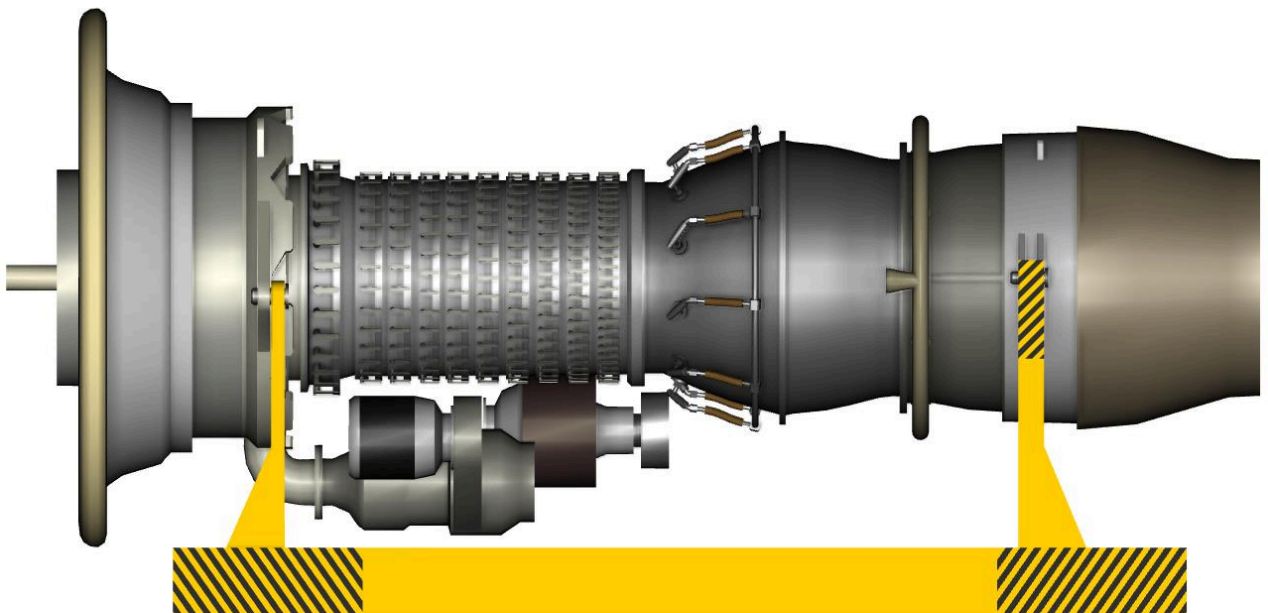


ICN-TURBINE-A-000000-0-00000-00014-A-01-1  
*Fig 4 Forward sump*

Applicable to:  
All

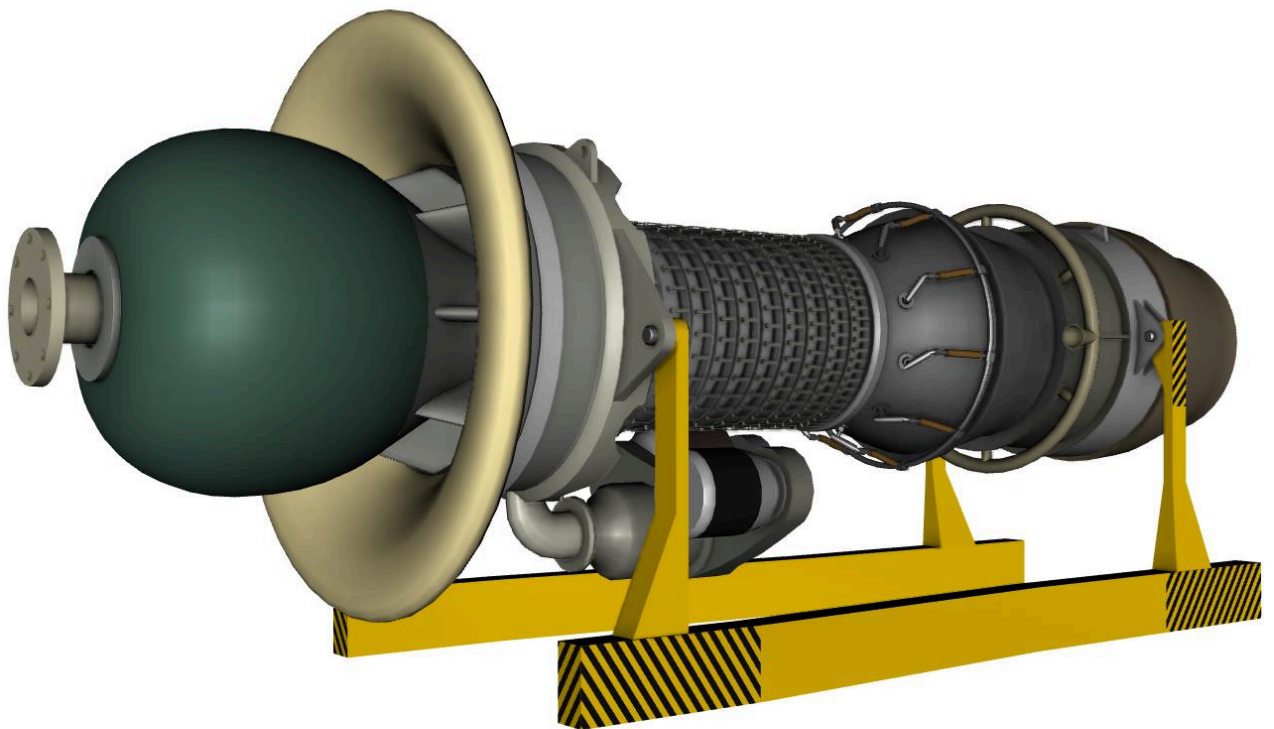
**TURBINE-A-000-00-00-00AA-720A-A**

- 
- 4.1 ATTACH FORWARD SUMP M-002.
  - 4.2 REMOVE THE COMBUSTION CHAMBER WAY.
  - 4.3 REMOVE THE COMPRESSOR WAY.
  - 5 INLET/OUTLET NOZZLES ASSEMBLY.
  - 5.1 INSTALL OUTLET NOZZLE MODULE M-006.
  - 5.2 INSTALL REAR PART OF INLET NOZZLE IN-002.
  - 5.3 INSTALL FRONT PART OF INLET NOZZLE IN-001.
  - 6 TURBINE SYSTEMS ASSEMBLY.
  - 6.1 ASSEMBLE COOLING SYSTEM PIPELINE T-001.
  - 6.2 ASSEMBLE FUEL PIPELINE M-004-004 AND FUEL NOZZELS M-004-005.
  - 6.3 ATTACH STARTER M-007.



ICN-TURBINE-A-000000-0-00000-00015-A-01-1  
*Fig 5 Turbine systems*

- 
- 7 REDUCTOR COVER INSTALLATION.
  - 7.1 ATTACH REDUCTOR MODULE M-001.
  - 7.2 INSTALL 10 BOLTS (NUT KOR-10).
  - 7.3 INSTALL LOWER COVER RC-002.
  - 7.4 INSTALL UPPER COVER RC-001.



ICN-TURBINE-A-000000-0-00000-00016-A-01-1  
*Fig 6 Assembled turbine*

---

Applicable to:  
All

**TURBINE-A-000-00-00-00AA-720A-A**

---

***Requirements after job completion*****Required conditions***Table 5 Required conditions*

Action/Condition	Data module/Technical publication
None	