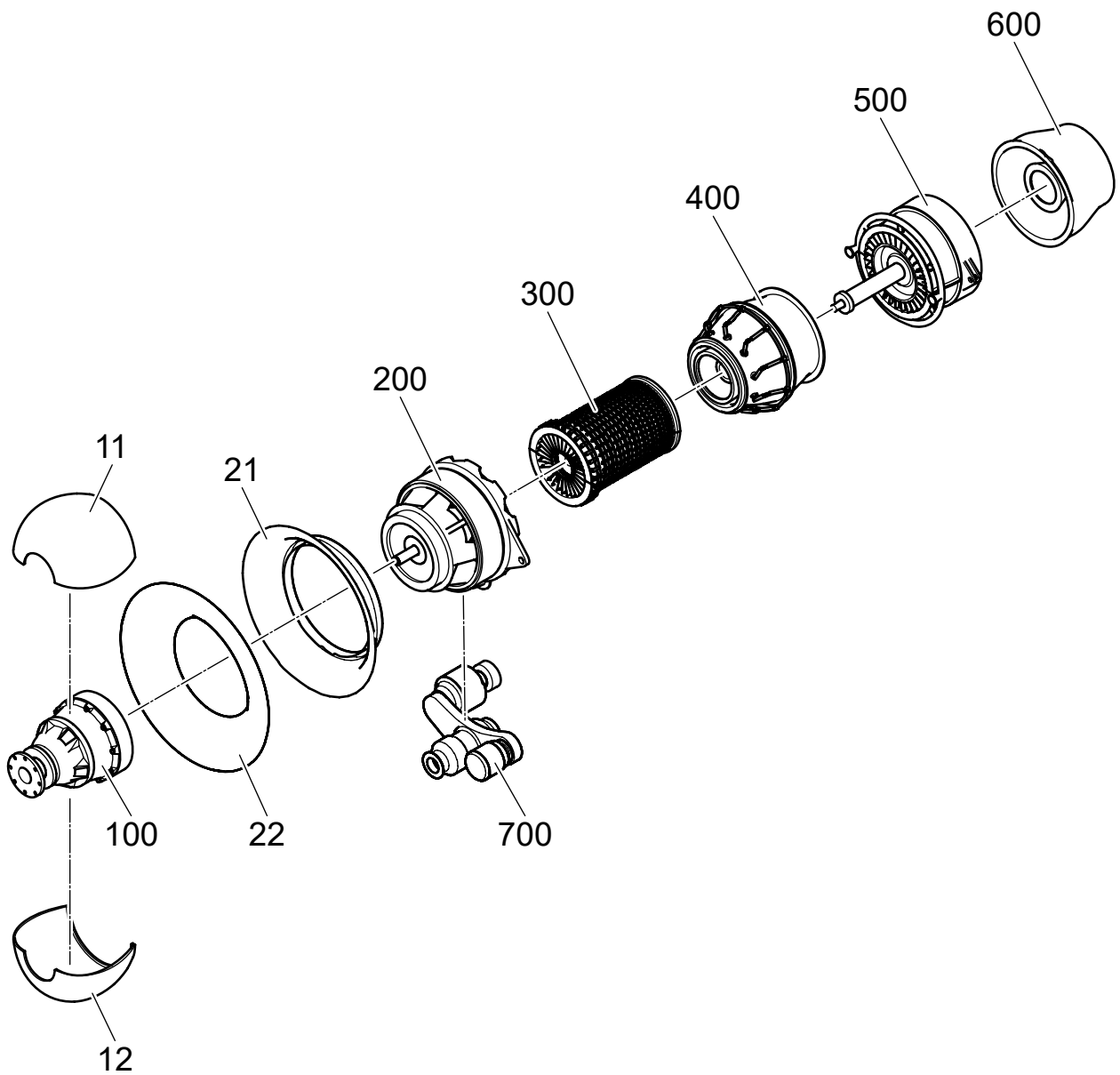

GAS TURBINE ENGINE C3D-D-01

Illustrated Parts Data

Table of contents

Page

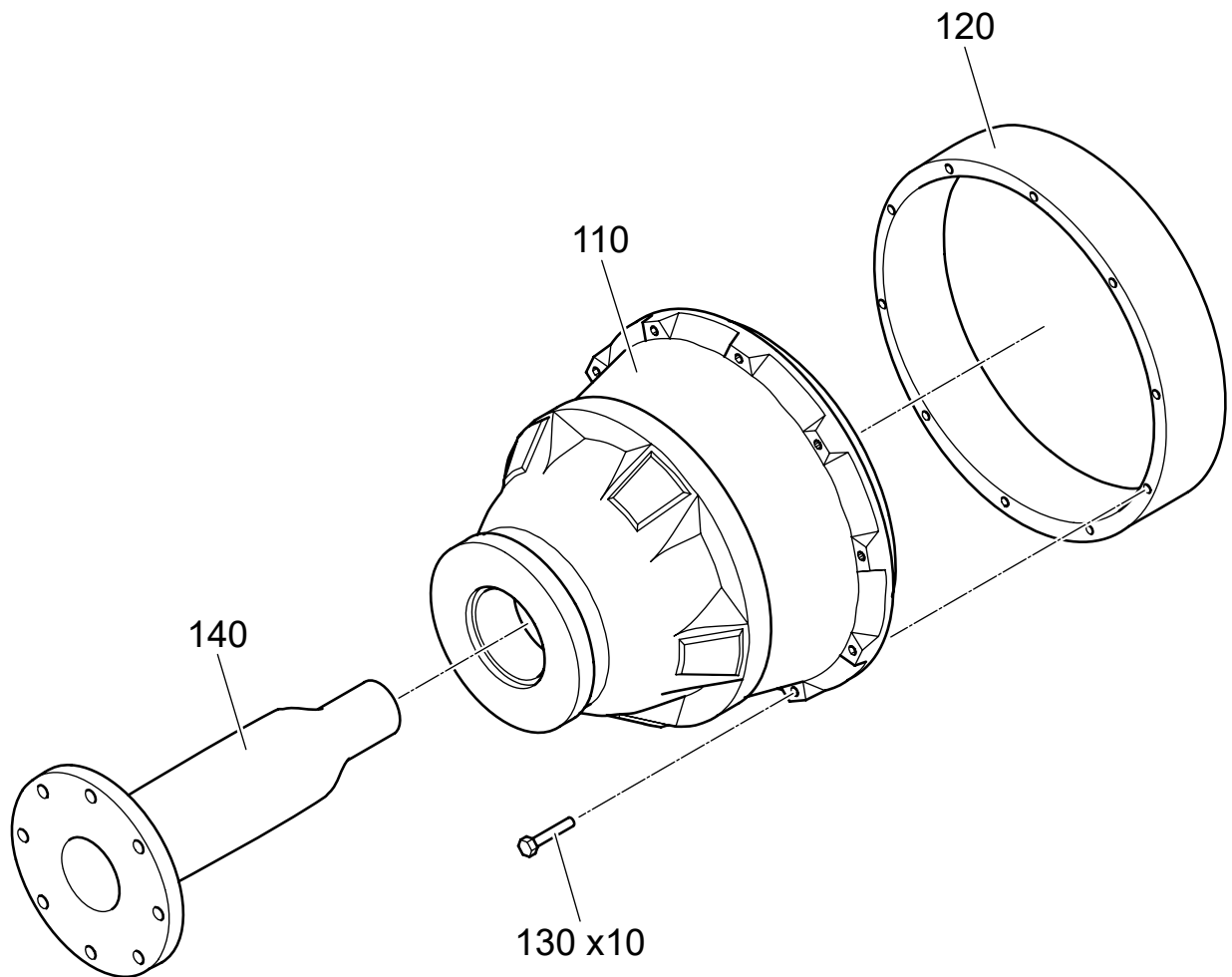
	Illustrated Parts Data	1
List of figures		
1	GAS TURBINE ENGINE C3D-D-01 (Sheet 1 of 8)	2
1	GAS TURBINE ENGINE C3D-D-01 (Sheet 2 of 8)	3
1	GAS TURBINE ENGINE C3D-D-01 (Sheet 3 of 8)	4
1	GAS TURBINE ENGINE C3D-D-01 (Sheet 4 of 8)	5
1	GAS TURBINE ENGINE C3D-D-01 (Sheet 5 of 8)	6
1	GAS TURBINE ENGINE C3D-D-01 (Sheet 6 of 8)	7
1	GAS TURBINE ENGINE C3D-D-01 (Sheet 7 of 8)	8
1	GAS TURBINE ENGINE C3D-D-01 (Sheet 8 of 8)	9



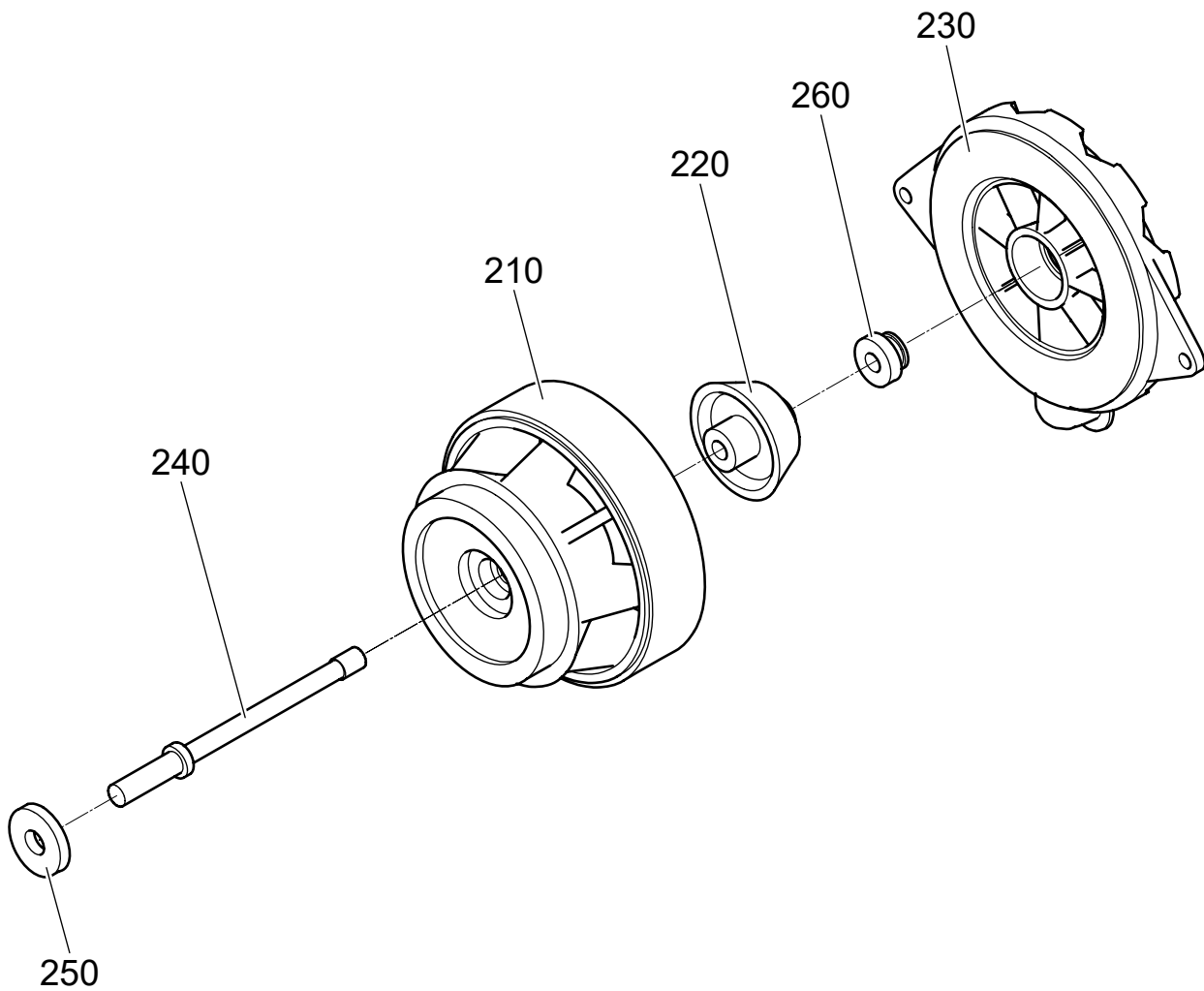
ICN-TURBINE-A-000000-0-00000-00001-A-01-1
 Fig 1 GAS TURBINE ENGINE C3D-D-01 (Sheet 1 of 8)

Applicable to:
 All

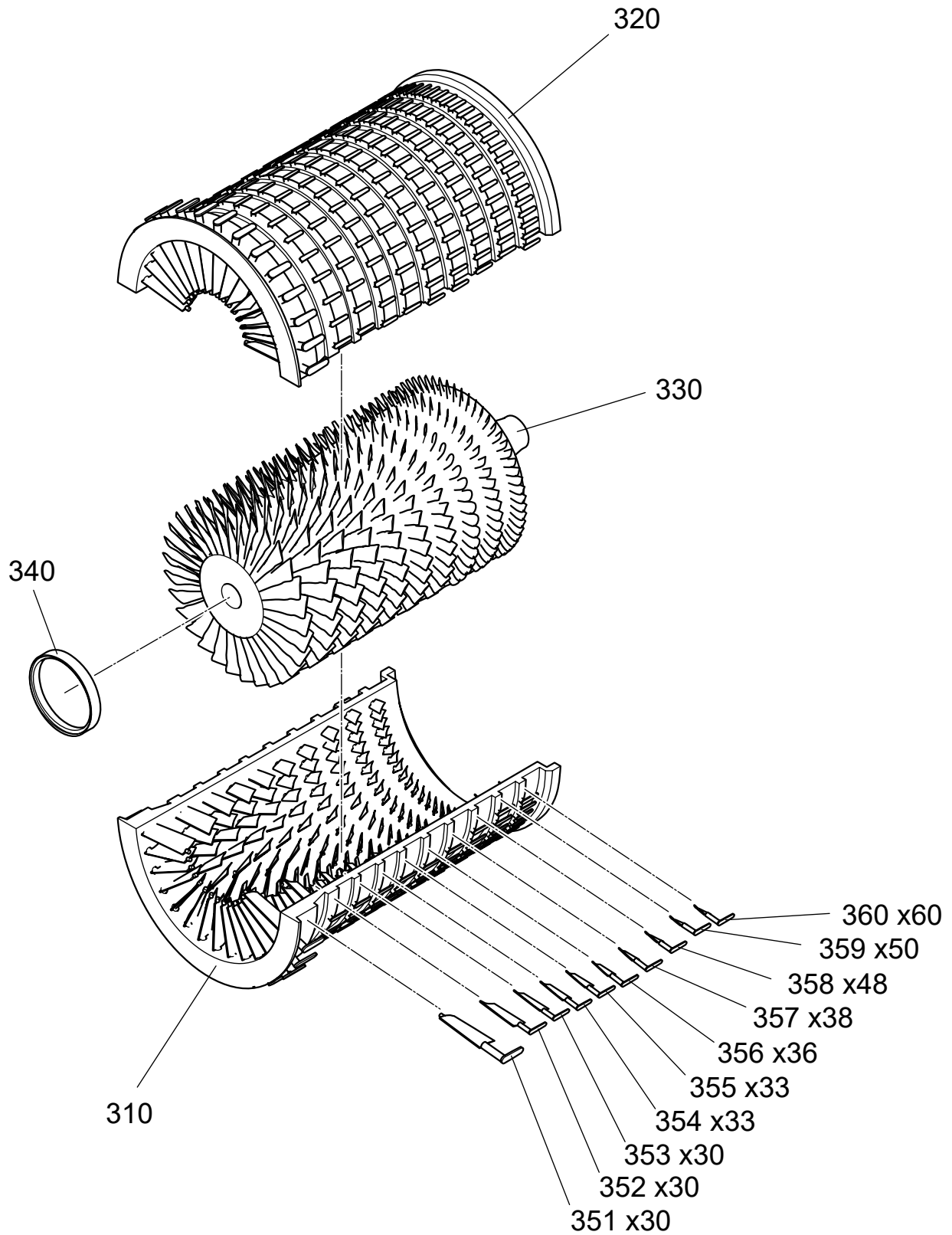
TURBINE-A-00-00-00-00AA-941D-A



ICN-TURBINE-A-000000-0-00000-00002-A-01-1
Fig 1 GAS TURBINE ENGINE C3D-D-01 (Sheet 2 of 8)



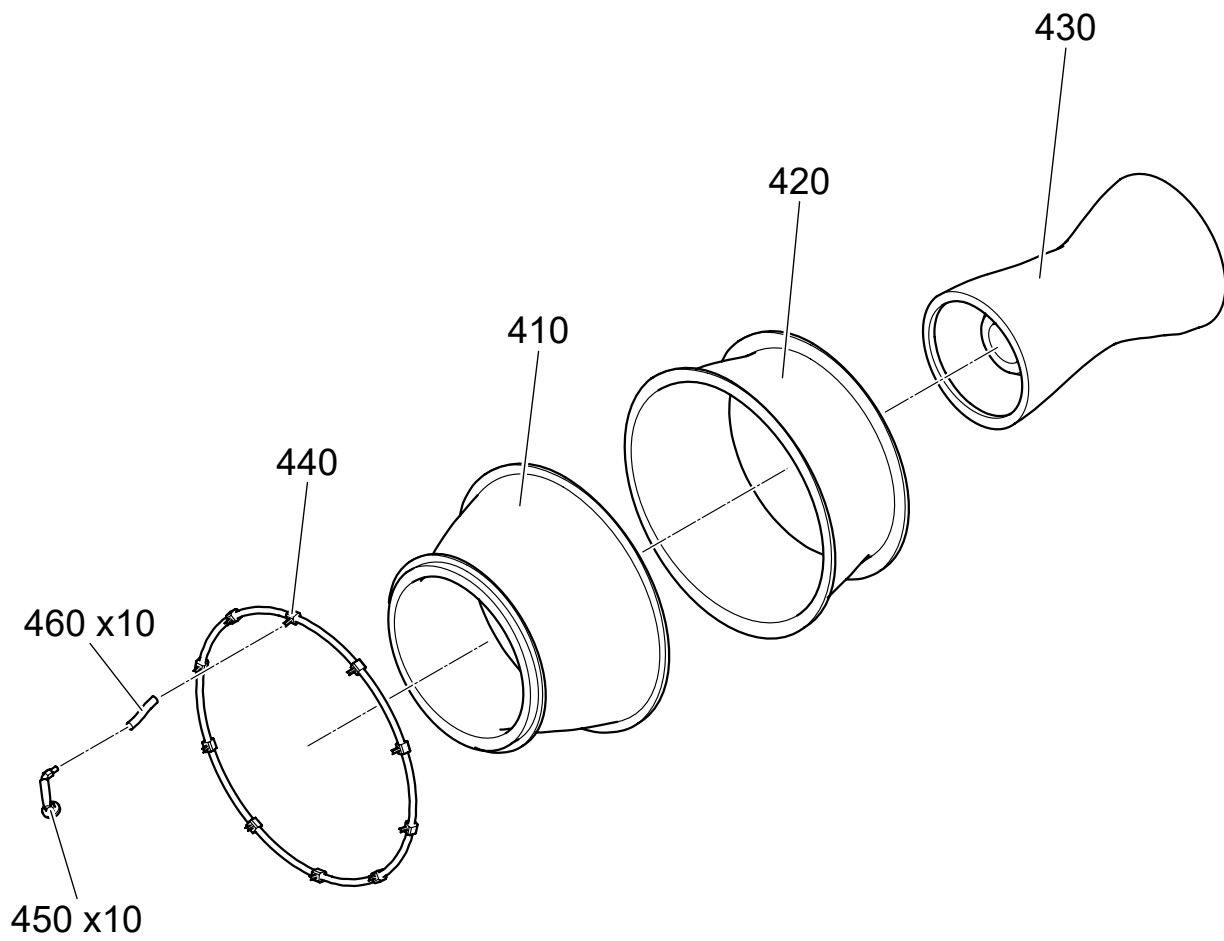
ICN-TURBINE-A-000000-0-00000-00003-A-01-1
Fig 1 GAS TURBINE ENGINE C3D-D-01 (Sheet 3 of 8)



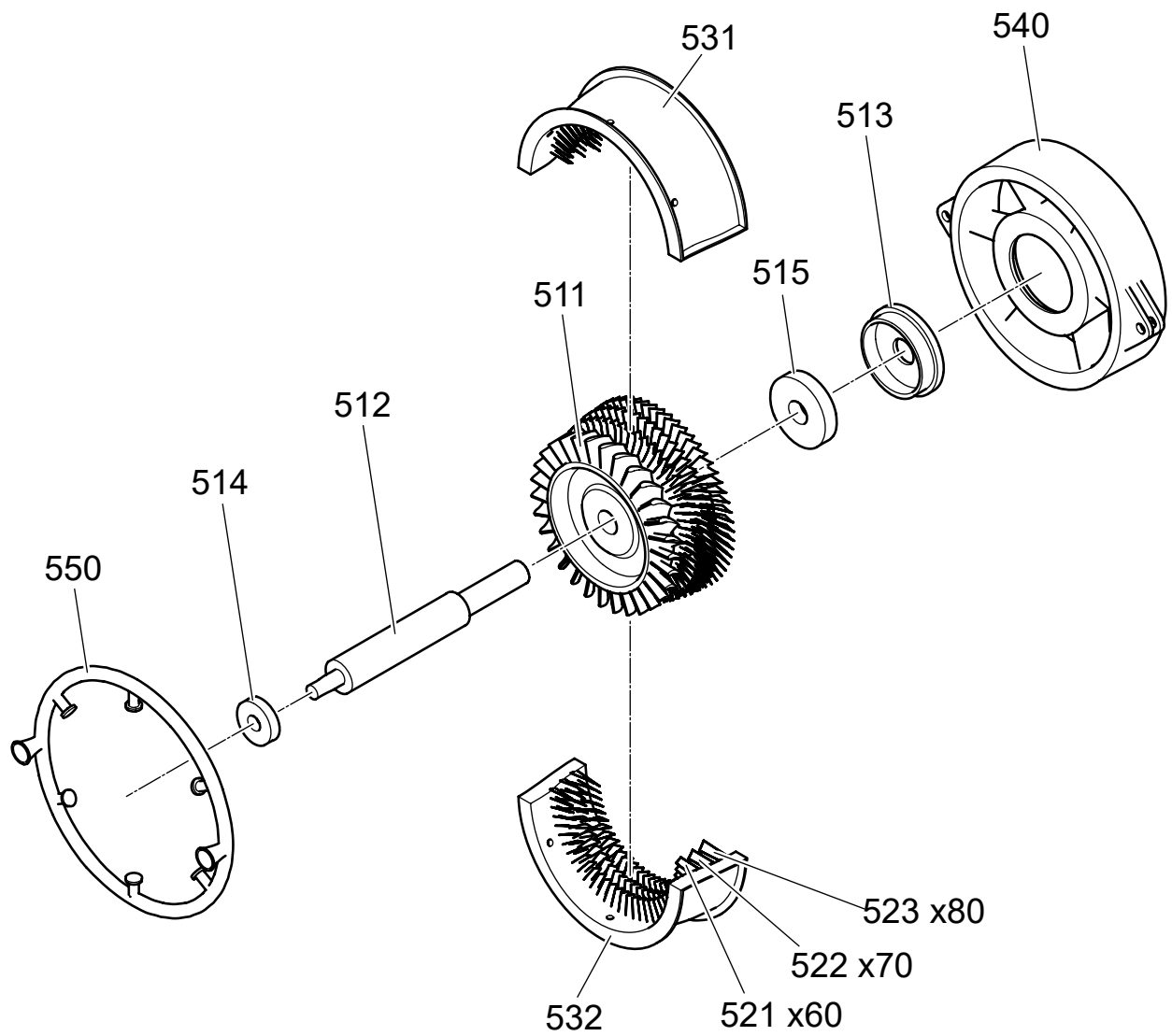
ICN-TURBINE-A-000000-0-00000-00004-A-01-1
 Fig 1 GAS TURBINE ENGINE C3D-D-01 (Sheet 4 of 8)

Applicable to:
 All

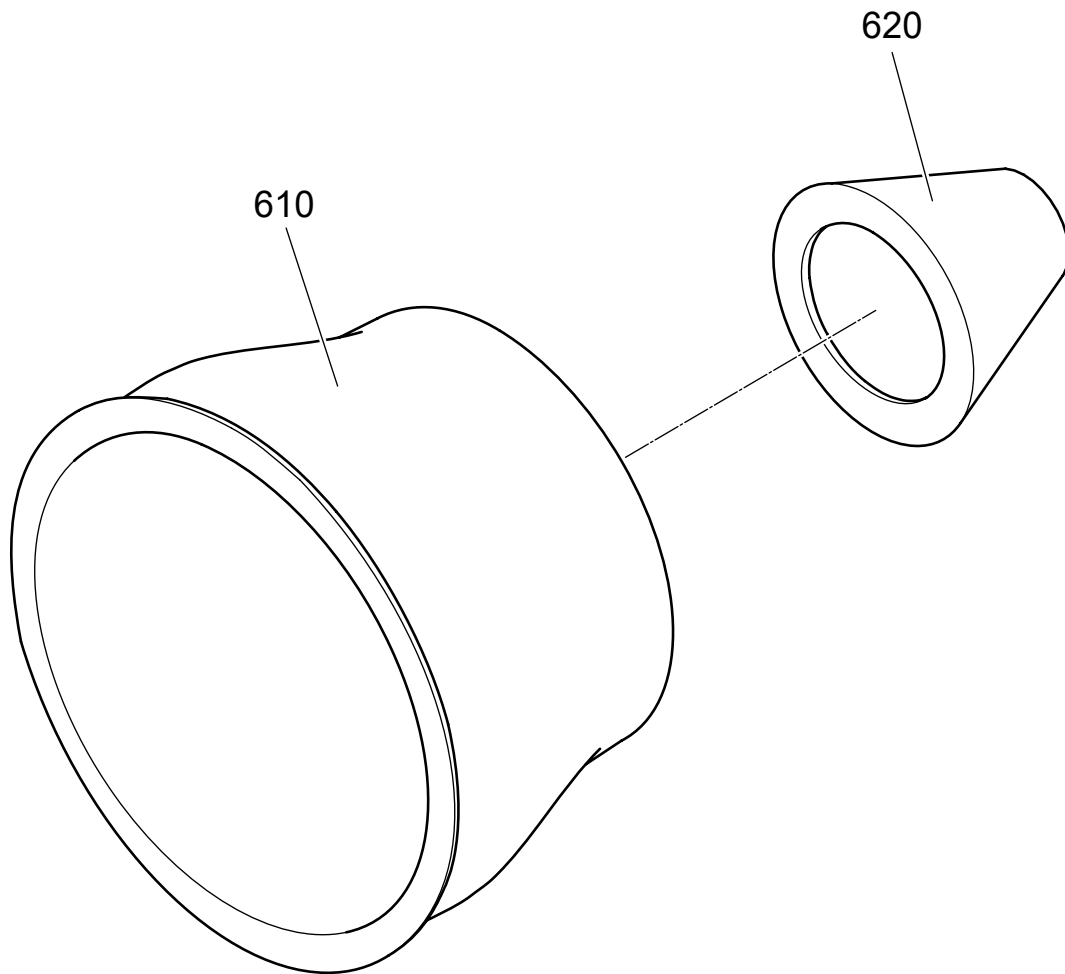
TURBINE-A-00-00-00-00AA-941D-A



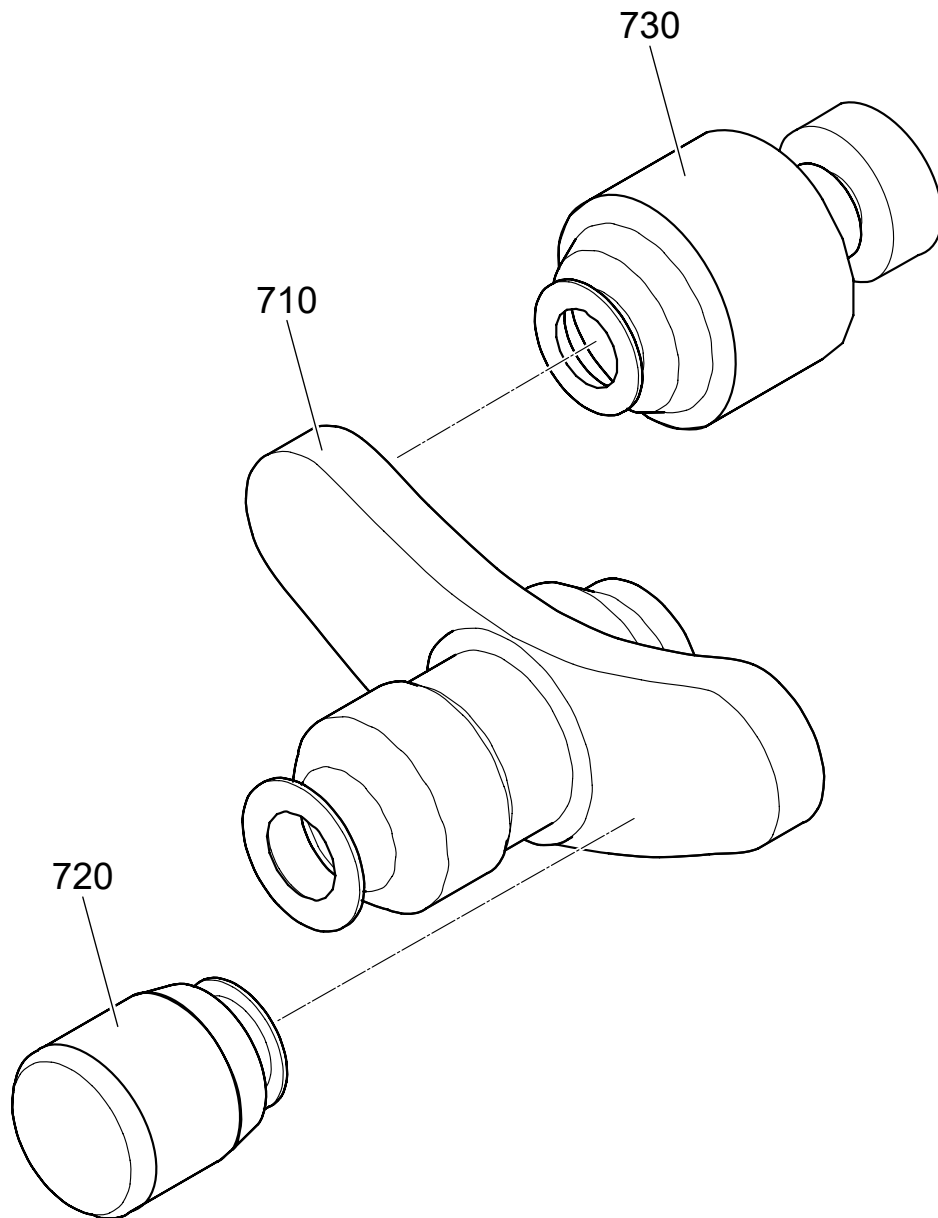
ICN-TURBINE-A-000000-0-00000-00005-A-01-1
Fig 1 GAS TURBINE ENGINE C3D-D-01 (Sheet 5 of 8)



ICN-TURBINE-A-000000-0-00000-00006-A-01-1
 Fig 1 GAS TURBINE ENGINE C3D-D-01 (Sheet 6 of 8)



ICN-TURBINE-A-000000-0-00000-00007-A-01-1
Fig 1 GAS TURBINE ENGINE C3D-D-01 (Sheet 7 of 8)



ICN-TURBINE-A-000000-0-00000-00008-A-01-1
Fig 1 GAS TURBINE ENGINE C3D-D-01 (Sheet 8 of 8)

UNCLASSIFIED

Fig	Item	Units per assembly/ Unit of issue	CAGE	Part No. NATO stock No.	Description	*Usable on code assy •MV/Effect	ICY
00AA							
	1	1		C3D-D-01	GAS TURBINE ENGINE		
	11	1		RC-001	•REDUCTOR COVER - UPPER		
	12	1		RC-002	•REDUCTOR COVER - LOWER		
	21	1		IN-001	•INLET NOZZLE FRONT		
	22	1		IN-002	•INLET NOZZLE REAR		
	100	1		M-001	•REDUCTOR MODULE		
	110	1		M-001-001	••REDUCTOR ASSEMBLY		
	120	1		M-001-002	••FRAME ADAPTER		
	130	10		KOR-001	••BOLT		
	140	1		M-001-001_215	••REDUCTOR SHAFT		
	200	1		M-002	•FORWARD SUMP ASSEMBLY		
	210	1		M-002-001	••FRONT FRAME		
	220	1		M-002-002	••SUMP COVER REAR		
	230	1		M-002-003	••SUMP COVER FRONT		
	240	1		M-002-004	••DRIVE SHAFT		
	250	1		B-001	••BEARING		
	260	1		B-002	••BEARING		
	300	1		M-003	•COMPRESSOR MODULE		
	310	1		M-003-001	••COMPRESSOR LOWER CASE		
	320	1		M-003-002	••COMPRESSOR UPPER CASE		
	330	1		M-003-003	••COMPRESSOR ROTOR		
	340	1		M-003-005	••CARRIER RING		
	351	30		M-003-000-001	••STAGE 1 BLADE		
	352	30		M-003-000-002	••STAGE 2 BLADE		
	353	30		M-003-000-003	••STAGE 3 BLADE		
	354	33		M-003-000-004	••STAGE 4 BLADE		
	355	33		M-003-000-005	••STAGE 5 BLADE		
	356	36		M-003-000-006	••STAGE 6 BLADE		
	357	38		M-003-000-007	••STAGE 7 BLADE		
	358	42		M-003-000-008	••STAGE 8 BLADE		
	359	50		M-003-000-009	••STAGE 9 BLADE		

Applicable to:
All

TURBINE-A-00-00-00-00AA-941D-A

UNCLASSIFIED

2015-02-17 Page 10

UNCLASSIFIED

Fig	Item	Units per assembly/ Unit of issue	CAGE	Part No. NATO stock No.	Description	*Usable on code assy •MV/Effect	ICY
	360	60		M-003-000-010	••STAGE 10 BLADE		
	400	1		M-004	•COMBUSTION CHAMBER		
	410	1		M-004-001	••FRONT HOUSING		
	420	1		M-004-002	••REAR HOUSING		
	430	1		M-004-003	••CRANKCASE		
	440	1		M-004-004	••FUEL PIPELINE		
	450	10		M-004-005	••FUEL NOZZLE		
	460	10		M-004-006	••FUEL PIPELINE TO NOZZLE CONNECTOR		
	500	1		M-005	•LOW PRESSURE TURBINE MODULE		
	510	1		M-005-001	••TURBINE ROTOR		
	511	1		M-005-005	•••ROTOR		
	512	1		M-005-007	•••TURBINE SHAFT		
	513	1		M-005-006	•••ROTOR COVER		
	514	1		B-003	•••BEARING		
	515	1		B-004	•••BEARING		
	520	1		M-005-002	••TURBINE STATOR		
	521	60		M-005-000-001	•••STAGE 1 BLADE		
	522	70		M-005-000-002	•••STAGE 2 BLADE		
	523	80		M-005-000-003	•••STAGE 3 BLADE		
	531	1		M-005-002-001	•••LPT UPPER CASE		
	532	1		M-005-002-002	•••LPT LOWER CASE		
	540	1		M-005-003	••AFT FRAME		
	550	1		T-001	••COOLING SYSTEM PIPELINE		
	600	1		M-006	•OUTLET NOZZLE MODULE		
	610	1		M-006-001	••OUTER NOZZLE		
	620	1		M-006-002	••INNER NOZZLE		
	700	1		M-007	•STARTER SYSTEM MODULE		
	710	1		M-007-001	••STARTER SYSTEM GEARBOX		
	720	1		M-007-002	••GENERATOR		
	730	1		M-007-003	••STARTER		

Applicable to:
All

TURBINE-A-00-00-00-00AA-941D-A

End of data module

UNCLASSIFIED

2015-02-17 Page 11