

# Axle Assembly WI

<b>Summary:</b>	Axle assembly Work Instructions
<b>Work type:</b>	Manual assembly, using the toolbox GR12
<b>Role:</b>	Assembler-Mechanic (class 3 and higher)
<b>Exp time:</b>	1 hour 27 minutes
<b>Work cell:</b>	Pit stop
<b>Pre job:</b>	
<b>Post job:</b>	AXLE-WI_DEMO-0000A
<b>Work order:</b>	Follow procedure PWS-05
<b>Revision:</b>	A.1

**PREREQUISITES**

Refer to general maintenance procedure document PWS-01

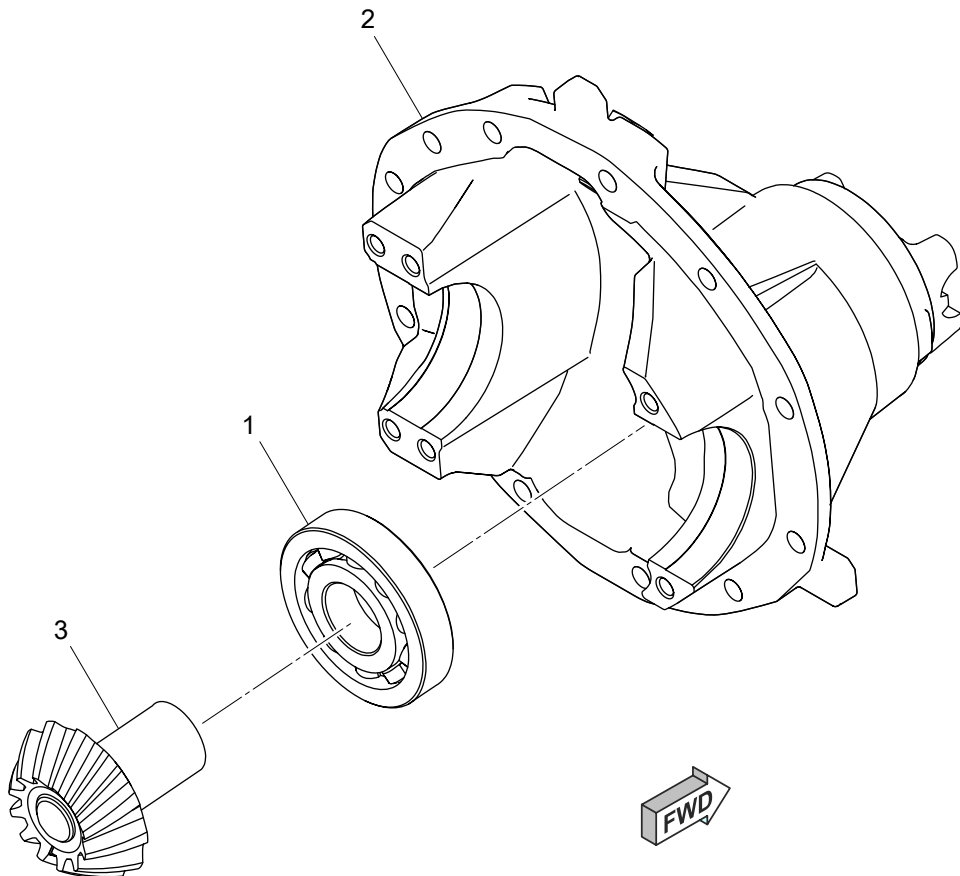
**REQUIRED PARTS**

<b>Part number</b>	<b>Description</b>	<b>Quantity</b>
YK10765	Axle Diff Unit	1
PT76543	Shaft Diff Bracet	1
MS-00012	Bearing	1
G240056	Leading Gear	1
BT76930	Bolt	6
NT35789	Washer	6
BT76931	Bolt	12
196415	Rear Axle Cover	1
AX10001	Rear Axle	1

## Axle Yoke Bearing Removal

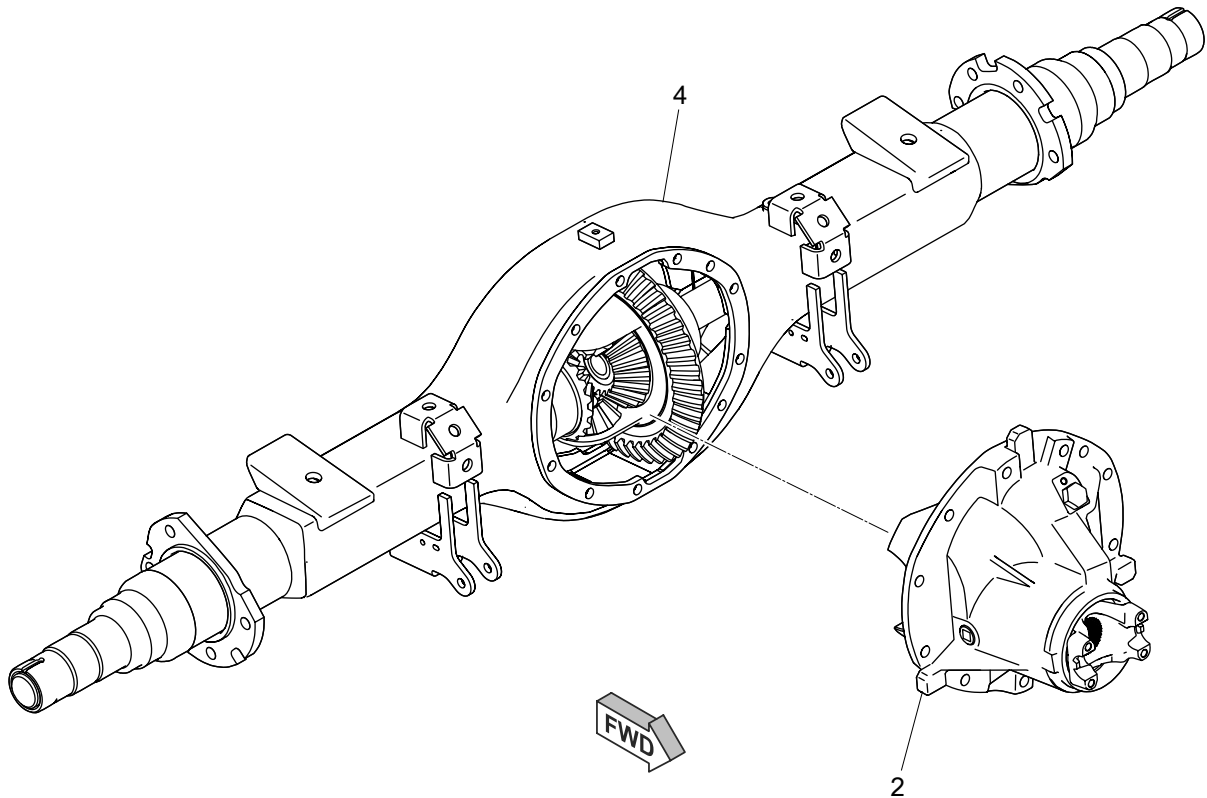
### TASK 1

Install the **Bearing** (1) to the **Axle Diff Unit** (2) and install the **Leading Gear** (3).



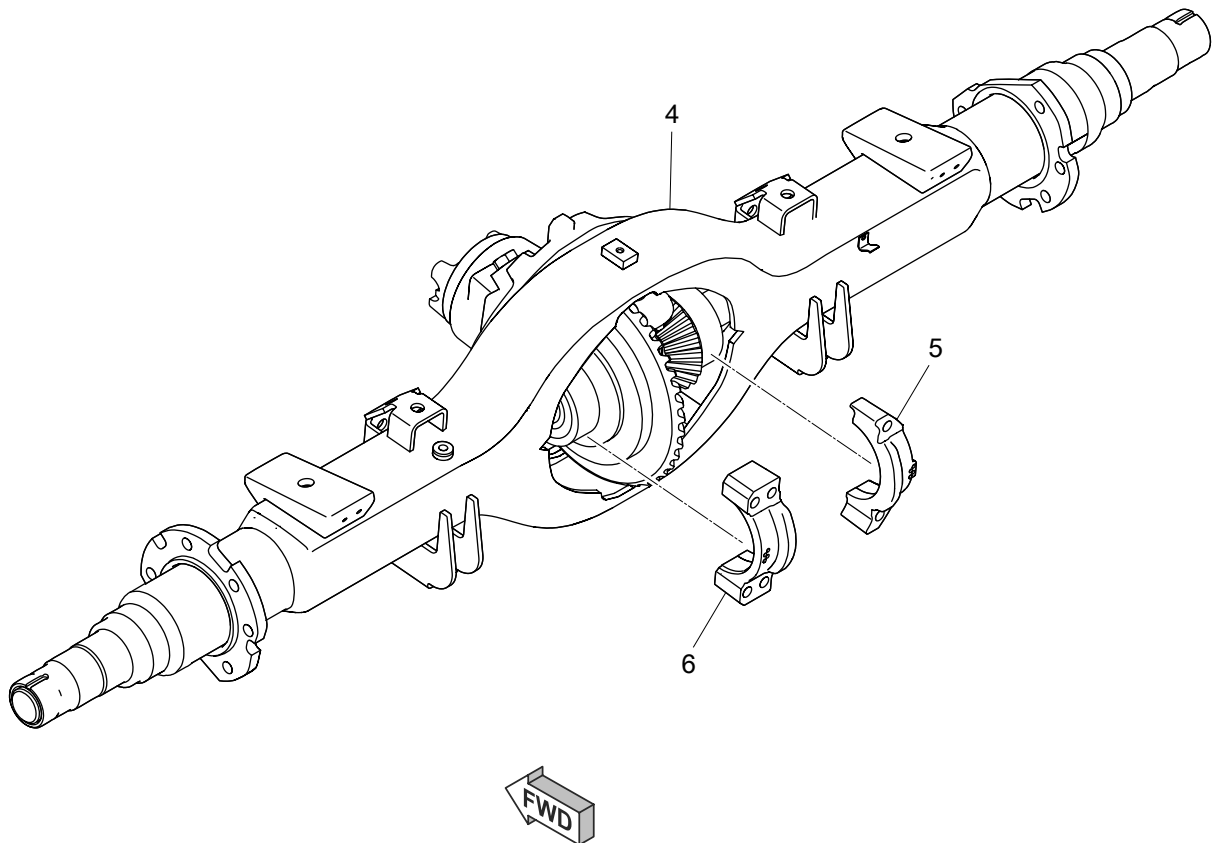
**TASK 2**

Install the [Axle Diff Unit \(2\)](#) to [Rear Axle \(4\)](#).



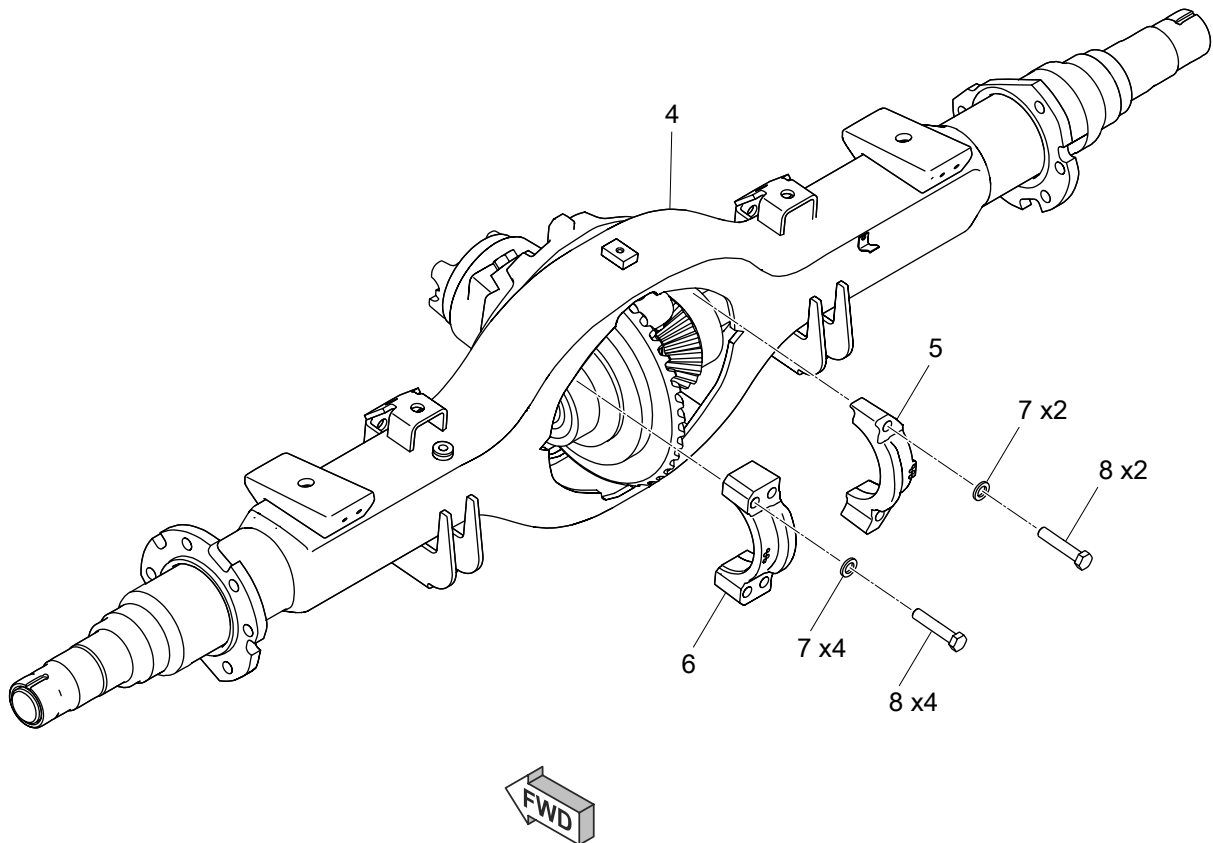
**TASK 3**

Install the Inner **Shaft Diff Bracets** (5,6) to the **Rear Axle** (4).



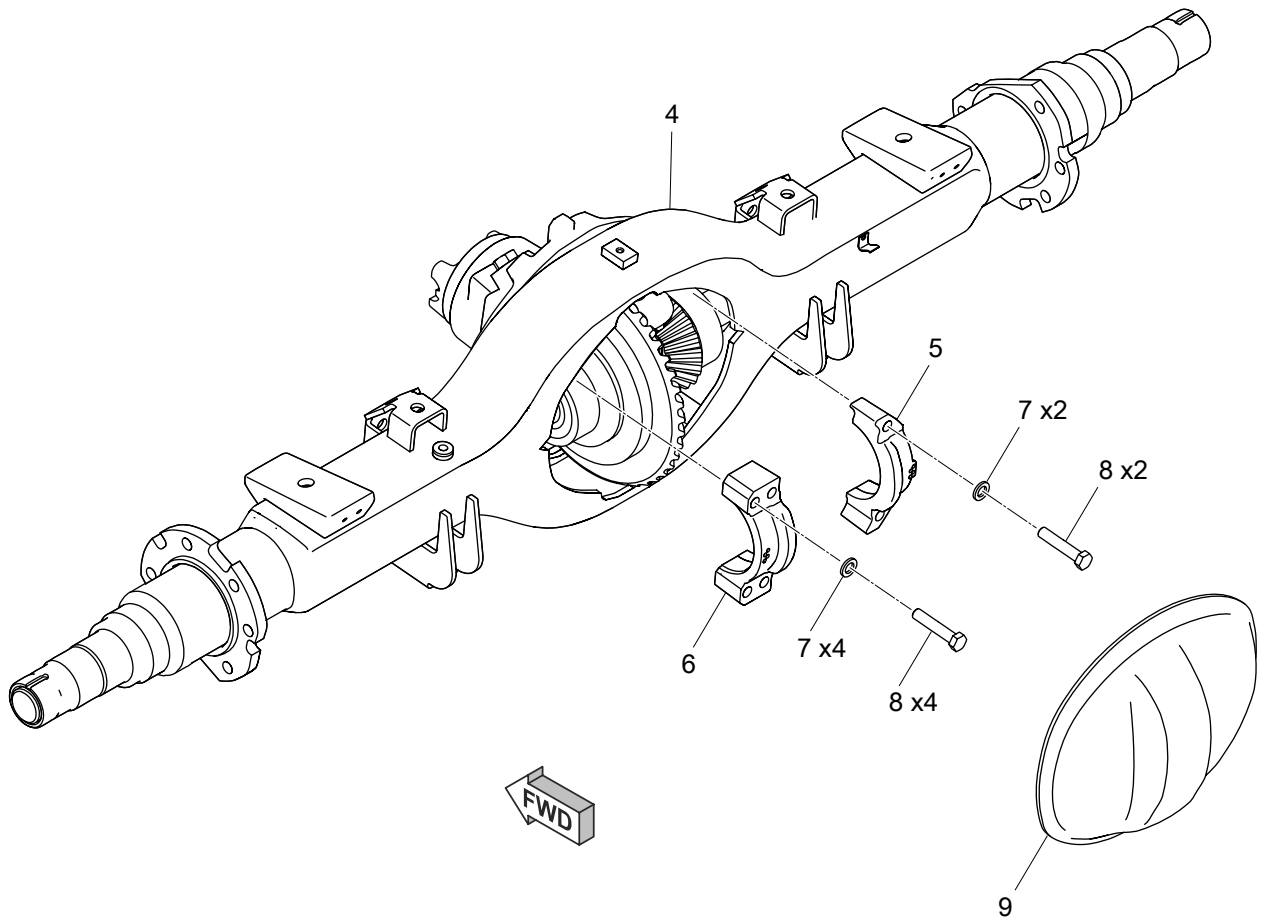
**TASK 4**

Install the **Washers** (7) and the **Bolts** (8) to the Inner **Shaft Diff Brackets** (5,6).



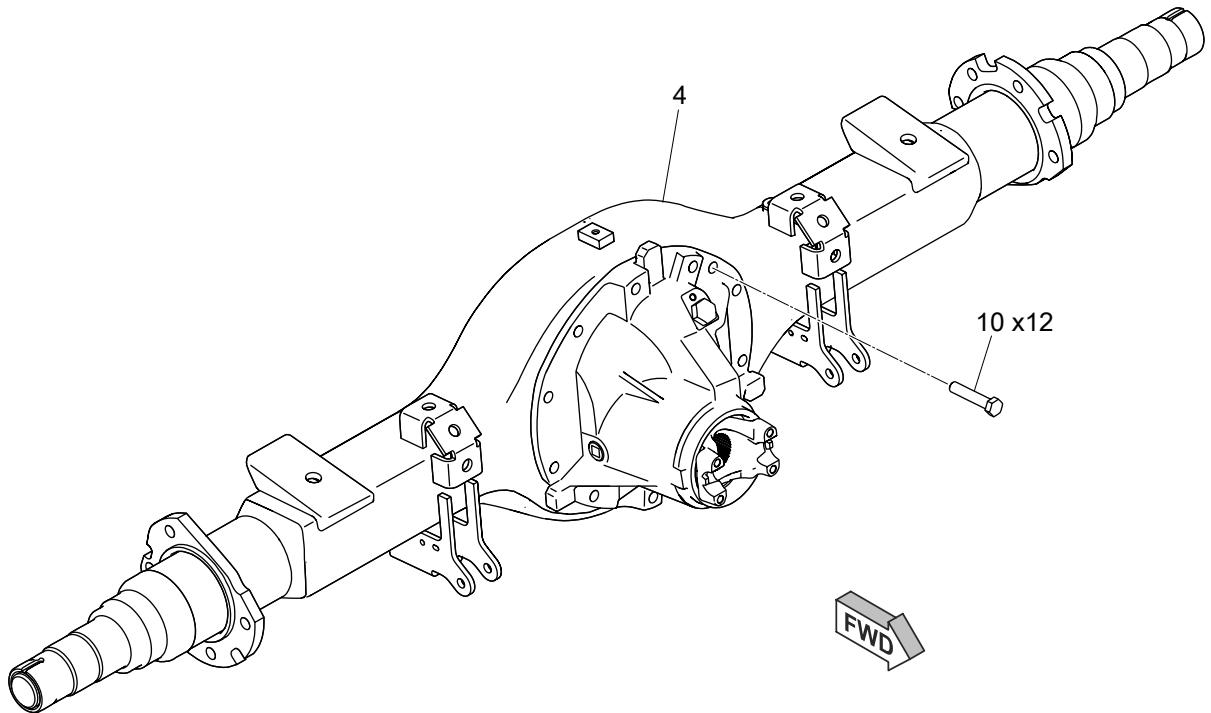
### TASK 5

Install the **Rear Axle Cover** (9) to **Rear Axle** (4).



**TASK 6**

Install the Bolts (10) to Rear Axle (4).





**TASK 7**

Inspect the [Rear Axle Assy](#) (4).

