

Machine Work Instruction

Summary:	Installation of Motor Assy on Workbench
Work type:	Assembly
Role:	Line
Exp time:	1.5 hrs
Work cell:	17
Pre job:	WB22550
Post job:	WB22600
Work order:	JB23C3
Revision:	1

PREREQUISITES

High voltage safety procedures must be observed.

Safety gear must be work at all times.

Power must be disconnected from Workbench before proceeding with the task.

REQUIRED PARTS

Part number	Description	Quantity
BT00440	BOLT	4
BT00521	BOLT	2
8X1L2	SHEETMETAL SCREW	4
8X1L2	SHEETMETAL SCREW	3
PU69520	PULLEY - SLAVE	1
WH87680	WASHER	2
CL34890	CABLE CLAMP	3
MT43200	MOTOR - MAIN DRIVE	1
MT43300	MOTOR MOUNT PLATE	1
PU69521	PULLEY COVER	1
MT43100	CLUTCH DRIVE ASSY	1
PU69530	KEY	2
CD88521	POWER CORD	1
MT43220	GUARD BRACKET	1
WH87690	WASHER	8
NT56155	NUT	4
BT00535	BOLT	4
PU69510	PULLEY - DRIVE	1
PU69550	BELT	1
CT54000	CONTROL PANEL	1
BT00420	BOLT	2
SH66270	GUARD - LEFT	1
	WRENCH	

JOB

TASK 1

Install Motor Mounting Plate.

WARNING

Ensure that power is disconnected before proceeding.

Install [Bolts](#) and [Washers](#) on [Motor Mounting Plate](#).

Attach Motor Mounting Plate on Workbench.

TASK 2

Install [Power Cord](#) and [Cable Clamps](#) on Motor Mounting Plate.

Secure with [Sheetmetal Screws](#).

TASK 3

Install [Clutch Drive Assy](#) and [Bolts](#).

TASK 4

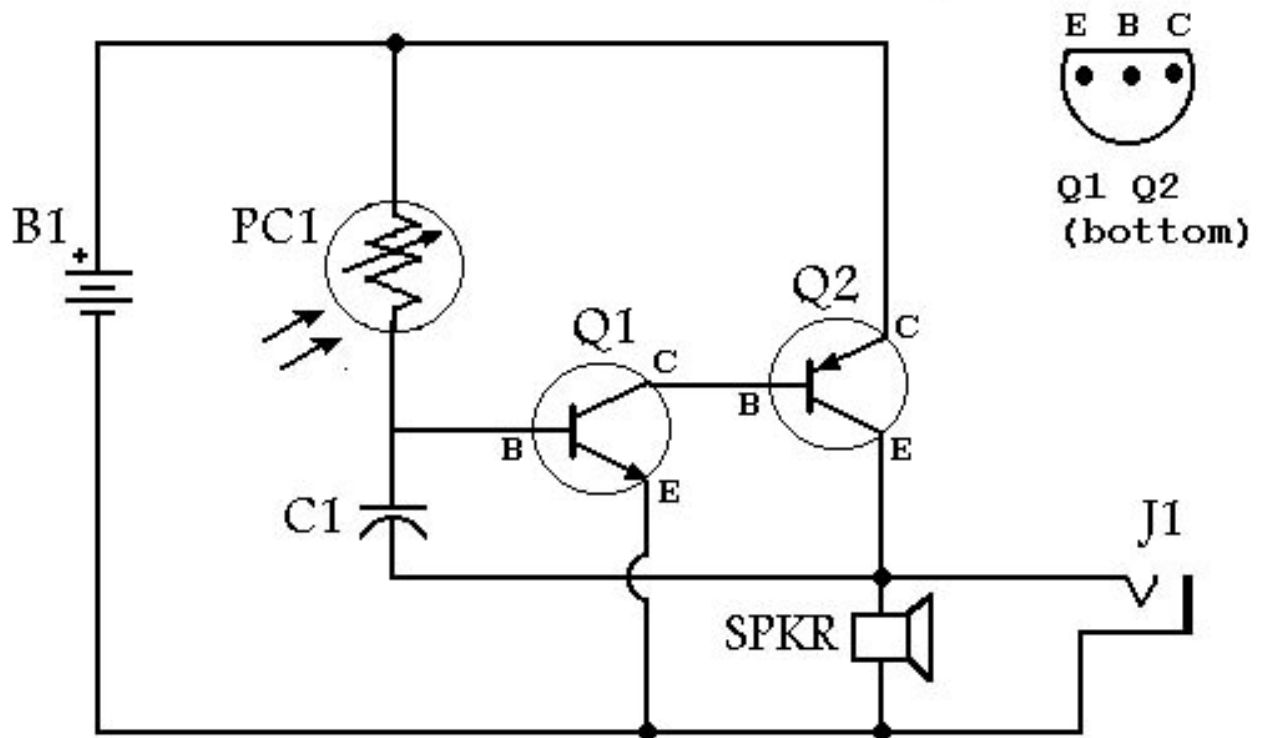
Install [Main Drive Motor](#).

Install [Bolts](#), [Washers](#) and [Nuts](#).

Tighten the [bolts](#), using a [Wrench](#) to secure the Nuts.

Tighten the [Bolts](#) to prevent movement during operation.

Connect [Power Cord](#) to Main Drive Motor.



TASK 5

- Install [Guard Bracket](#) and [Sheetmetal Screws](#).
- Install [Pully Cover](#).
- Install [Key](#) and [Drive Pulley](#) on Drive Motor Shaft.
- Install [Key](#) and [Slave Pulley](#) on Clutch Shaft.
- Install [Belt](#) on Pulleys.

TASK 6

- Install [Left Guard](#).
- Install [Bolts](#).

TASK 7

Test Operation

NOTE

Ensure that power is connected before proceeding.

Turn on Workbench using the [Control Panel](#).

Ensure that movement is smooth in all both directions.

Turn off Workbench using the Control Panel.