

# AIRCRAFT MAINTENANCE MANUAL

## INTRODUCTION - DESCRIPTION AND OPERATION

### 1. GENERAL

EFFECTIVITY: All

INTENTIONALLY BLANK

EFFECTIVITY: All

**AIRCRAFT MAINTENANCE MANUAL**

**SERVICE BULLETIN LIST**

EFFECTIVITY: All

**SB LIST**

Page 1  
Dec 02/11

# AIRCRAFT MAINTENANCE MANUAL

INTENTIONALLY BLANK

EFFECTIVITY: All

**SB LIST**

Page 2  
Dec 02/11

**GENERAL**

**TASK TASK 32-10-02-400-801**

**1. Procedure**

**A. MLG Torque Links Installation**

SUBTASK SUBTASK 32-10-02-210-001

(1)

NOTE: Procedures for the right and left components are the same. Only the procedures for the left are given.

SUBTASK SUBTASK 32-10-02-220-002

(2) Prepare torque link bushings, pins and the strut for an assembly procedure.

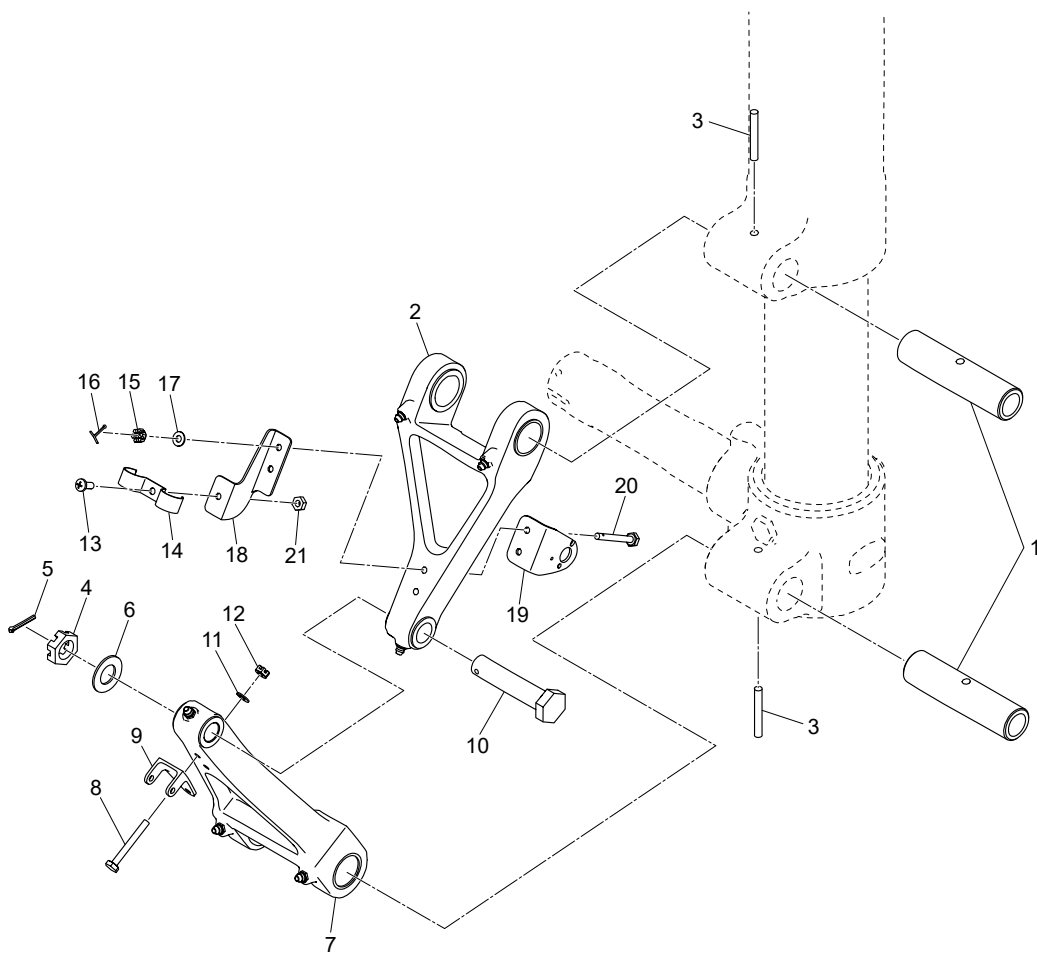
SUBTASK SUBTASK 32-10-02-410-003

(3)

1. Install the upper torque link (2) and lower torque link (7) to the strut and axle.
2. Install link pins (1) to the upper (2) and lower (7) torque links.
3. Install the safety wire to each slotted spring pin (3).
4. Install the bolt (10), washer (6), nut (4) and cotter pin (5) to the torque links (2 and 7).
5. Install the switch terminal bracket (9), bolts (8), washers (11) and nuts (12) to the lower torque link (7).
6. Install the switch bracket (19), bolts (20), the standoff bracket (18), washers (17), nuts (15) and cotter pins (16) to the upper torque link (2).
7. Install the clamp (14), the screw (13) and the nut (21) to the torque link standoff bracket (18).

SUBTASK SUBTASK 32-10-01-420-004

(4) Install the wheel assy.



Torque Links Installation  
Figure 2