

ELECTRIC MOTORCYCLE

All rights reserved. No part of this document may be reproduced or transmitted in any form or by any means, electronic or mechanical, including photocopying or recording, or by any information storage and retrieval system, except as permitted by the appropriate Copyright Transfer Act.

Contents

INTRODUCTION.....	3
GENERAL INFORMATION.....	4
GENERAL VIEW.....	4
TECHNICAL DATA.....	5
POWER JACK INSTALLATION.....	6
REPAIR MANUAL.....	8
DISASSEMBLING THE FRONT FENDER ASSY.....	8
FRONT WHEEL REMOVAL.....	10
LEFT FRONT FORK REMOVAL.....	12
RIGHT FRONT FORK REMOVAL.....	15
PARTS CATALOG.....	18
FRAME ASSY.....	18
STEERING.....	20
BRAKE.....	22
FRONT FORK.....	25
SWINGARM.....	27
REAR ABSORBER.....	29
FRONT WHEEL ASSY.....	30
REAR WHEEL ASSY.....	31
MOTOR.....	32
BATTERY.....	33
COWLING.....	34
LIGHT.....	36

INTRODUCTION

Congratulations on your new electric motorcycle purchase and thank you for choosing us. We hope you enjoy riding your motorcycle as much as we enjoy building it. This manual is a comprehensive guide that provides important information about the technical features of your motorcycle, along with tips for proper operation and maintenance. It is important that you read these operating instructions carefully before riding your motorcycle for the first time. Proper use and maintenance of your electric motorcycle will ensure your safety and extend its lifespan. Our team is always available to provide advice and assistance when needed.

- Read the manual carefully.
- Follow all the recommendations and procedures contained in this manual.
- Pay close attention to the safety messages contained in this manual and on the motorcycle.

This manual is primarily intended for use by trained mechanics in properly equipped service facilities. However, it contains sufficient information for the owner who wishes to perform basic maintenance and repairs on the electric motorcycle themselves.

For quick reference, the manual should be kept in the motorcycle's luggage compartment, ensuring that it is easily accessible when needed.

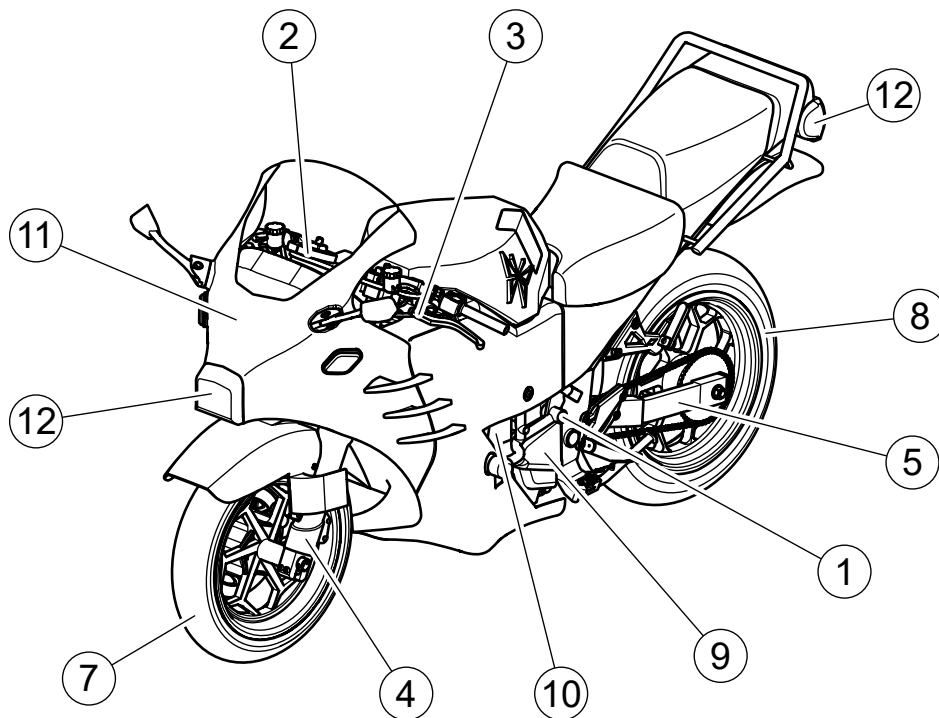
This manual is considered a permanent part of the motorcycle and should remain with the vehicle, even when it is resold.

This manual contains the latest available production information before printing. However, slight discrepancies between your motorcycle and the illustrations and text in this manual may occur.

We reserve the right to change all products without prior notice or obligation.

GENERAL INFORMATION

GENERAL VIEW



1. Frame
2. Steering
3. Brakes
4. Front fork
5. Swingarm
6. Rear absorber
7. Front wheel
8. Rear wheel
9. Motor
10. Battery
11. Cowling
12. Light

TECHNICAL DATA

PERFORMANCE FIGURES

Maximum capacity	120 hp (80 kW)
Top speed	120 km/h
Range	120-150 km
Charge time	2-5 hours

DIMENSIONS

Overall length	2100 mm
Overall width	650 mm
Overall height	1200 mm
Weight	130 kg
Front tyre	120/70ZR17 M/C (58 W)
Rear tyre	150/55ZR17 M/C (73 W)
Tilt angle of the rotation axis	27°
Front brake	Disk brake
Rear brake	Disk brake

ELECTRICAL SYSTEM


Batteries	Li 60-120 Ah
Recharge cycles	1500 times
Motor Type	Mid-Drive
Battery capacity	3-15 kWh
Bulb for high-beam headlight	LED
Bulb for low-beam headlight	LED
Bulb for tail light/brake light	LED

Specifications are subject to change without notice and may not apply in some countries.

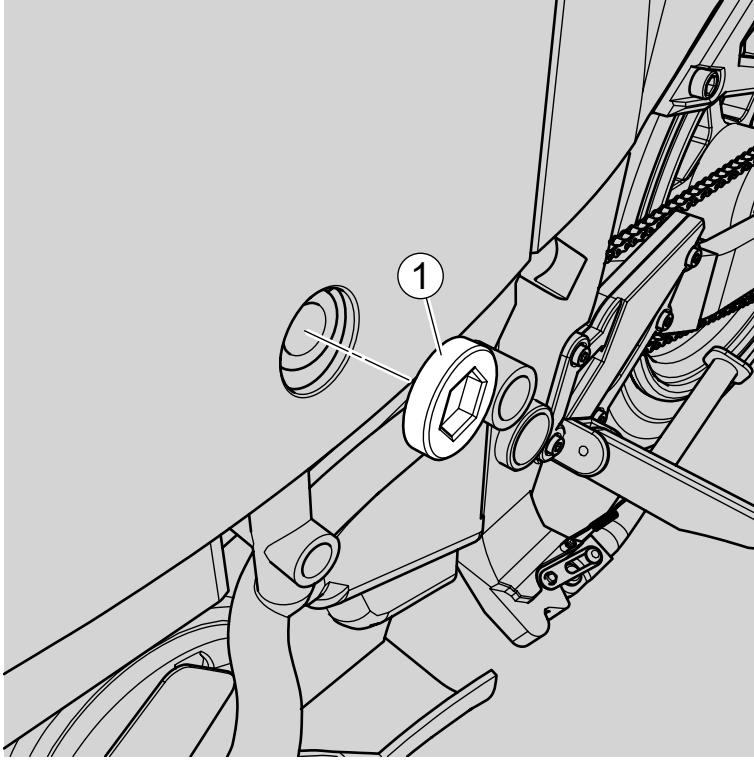


WARNING: Not checking before use could result in serious damage or an accident. The inspection should be performed daily before operating the vehicle.

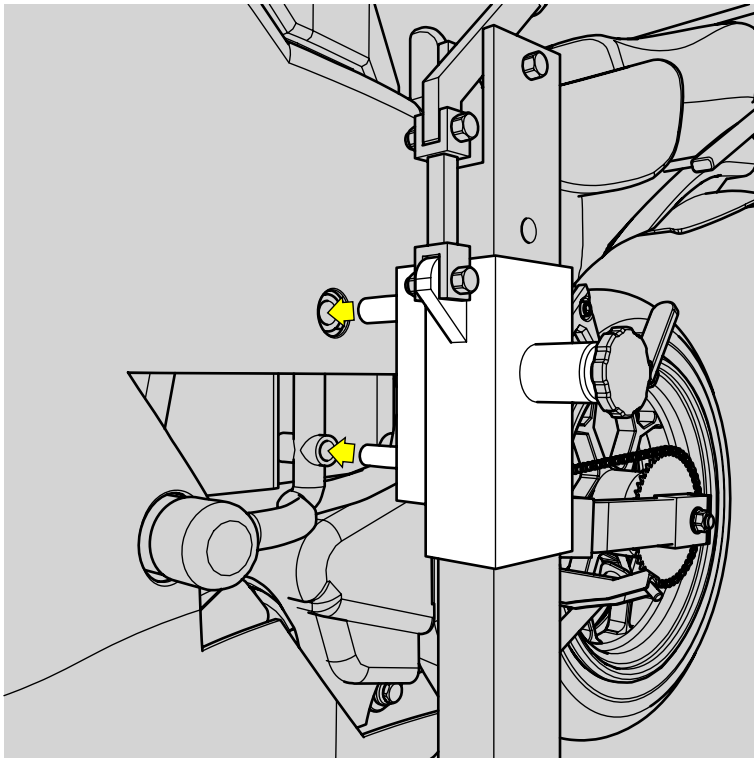
POWER JACK INSTALLATION

1.  **CAUTION:** Before beginning, ensure that the vehicle is securely positioned so that there is no risk of it falling over.

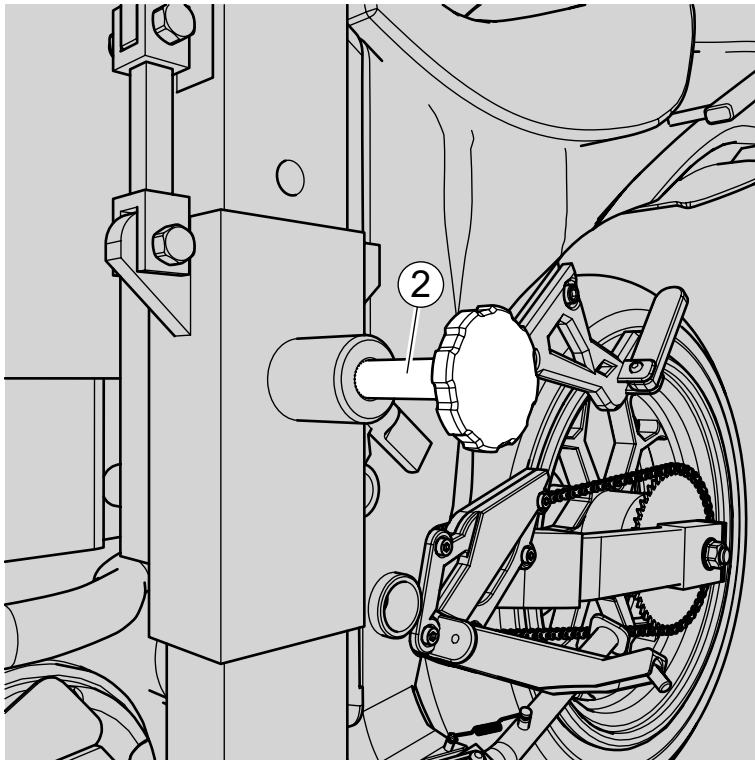
Unscrew the plug on the left cowling.



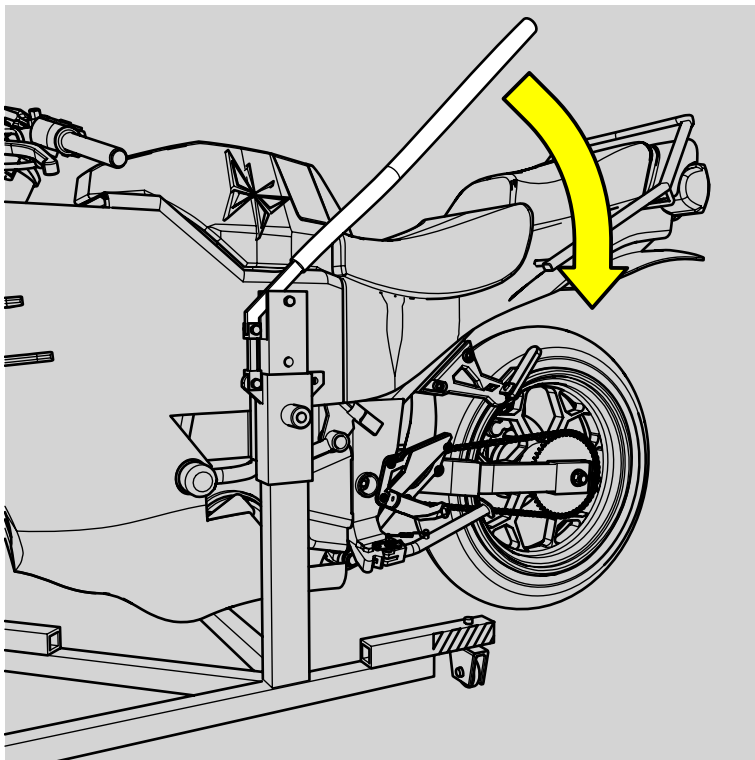
2. Position the jack against the guide holes in the frame.



3. Remove the jack retainer (2).



4. Lift the motorcycle with the jack lever.




5. Install the retainer (2) to secure the jack lever.



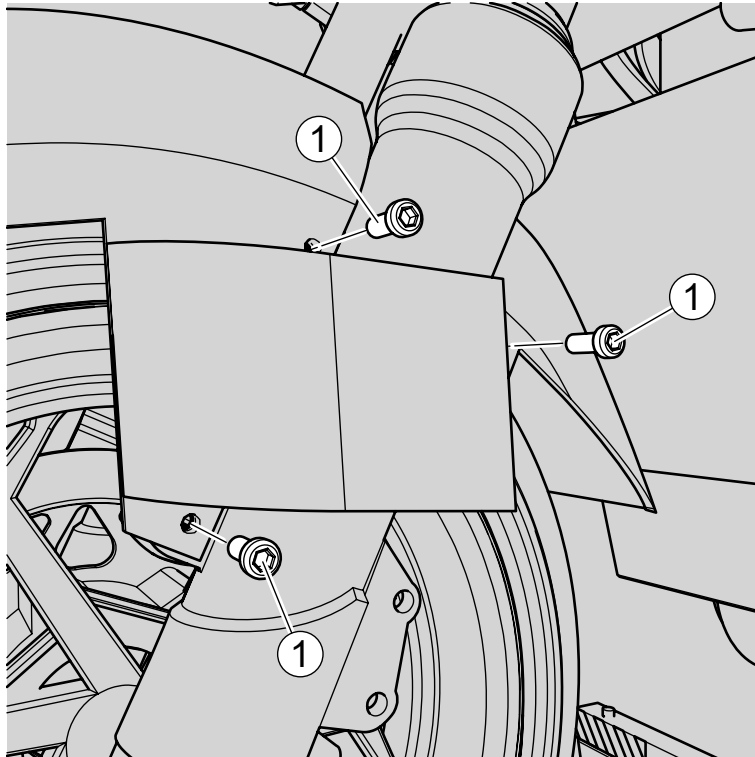
CAUTION: Again, make sure that the vehicle is securely positioned so that there is no risk of it falling over.

REPAIR MANUAL

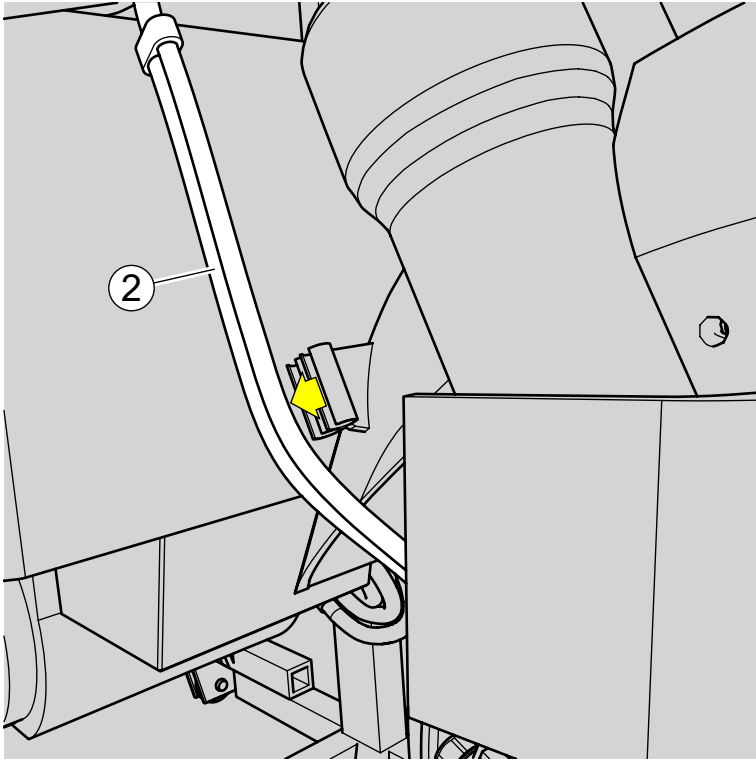
DISASSEMBLING THE FRONT FENDER ASSY

1.  **CAUTION:** Ensure that the vehicle is firmly and safely secured to prevent any risk of it tipping over or falling during the procedure.

Unscrew the bolts (1) on the left side of the front fender.




2. Unscrew the bolts on the right side of the front fender.
3. Disconnect the brake hoses (2) from the brackets on the front fender.



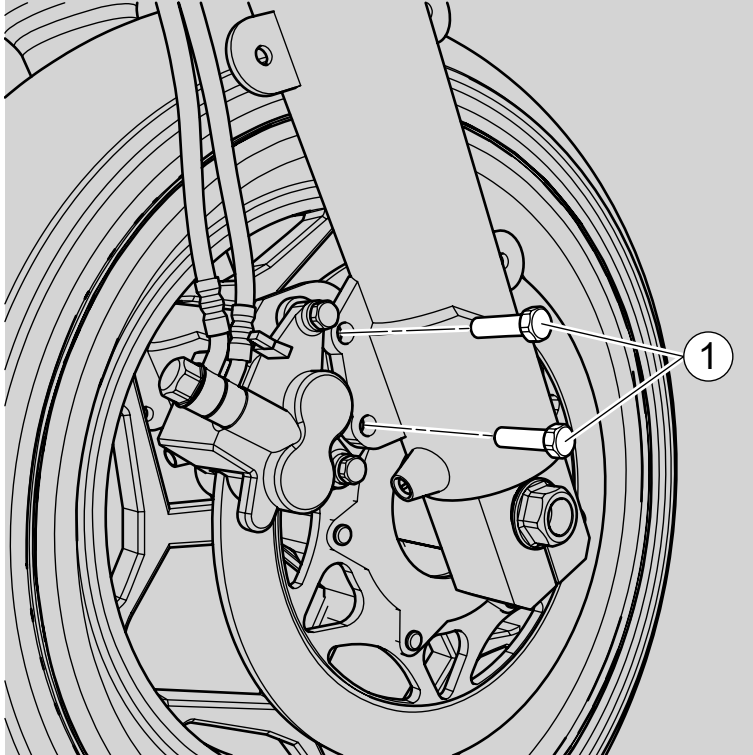
4. Remove the front fender. Make sure to keep all the bolts and parts in a safe place for reassembly.

FRONT WHEEL REMOVAL

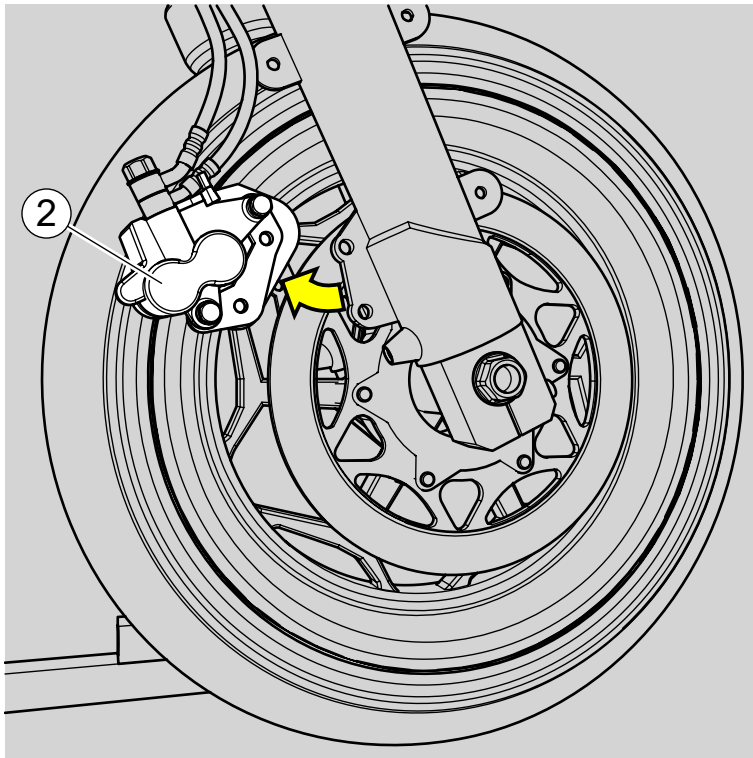
Place the vehicle on a suitable stand or jack stand so that the front wheel is raised.

1.  **CAUTION:** Make sure that the vehicle is securely fastened to avoid any risk of it falling.

Unscrew the bolts (1) securing the brake caliper to the front fork tube.

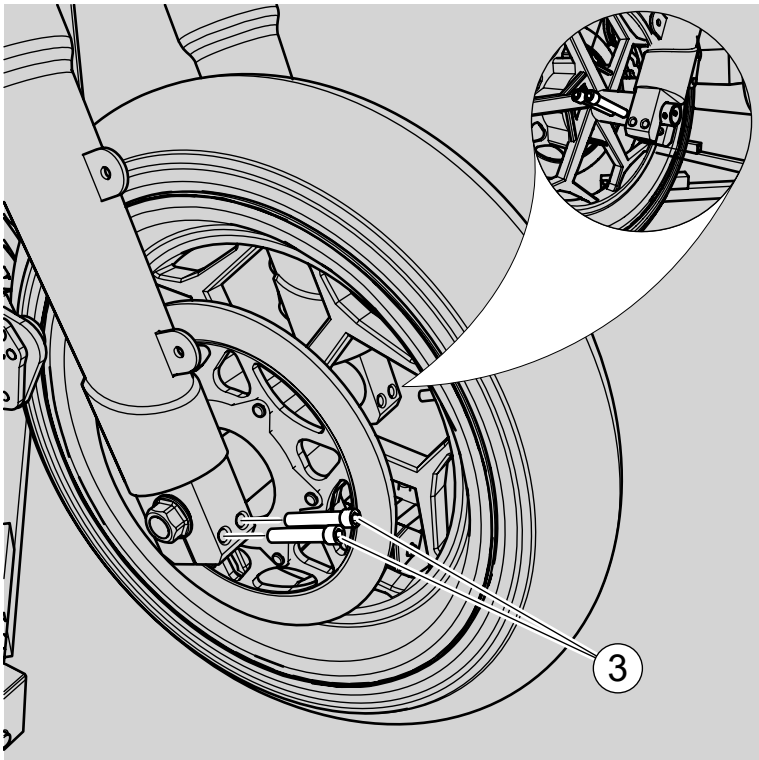


2. Disconnect the front brake caliper (2) and move it to the side.

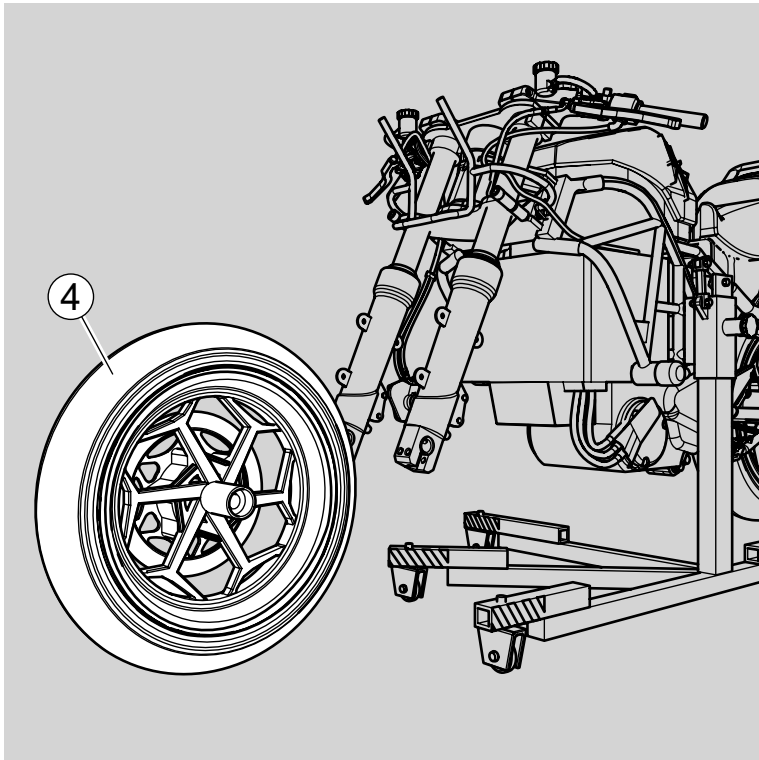


WARNING: Visually inspect the brake disc to determine if it is damaged or cracked.


3. Unscrew the bolts (3) on the right and left side of the front fork tubes that hold the front wheel axle.



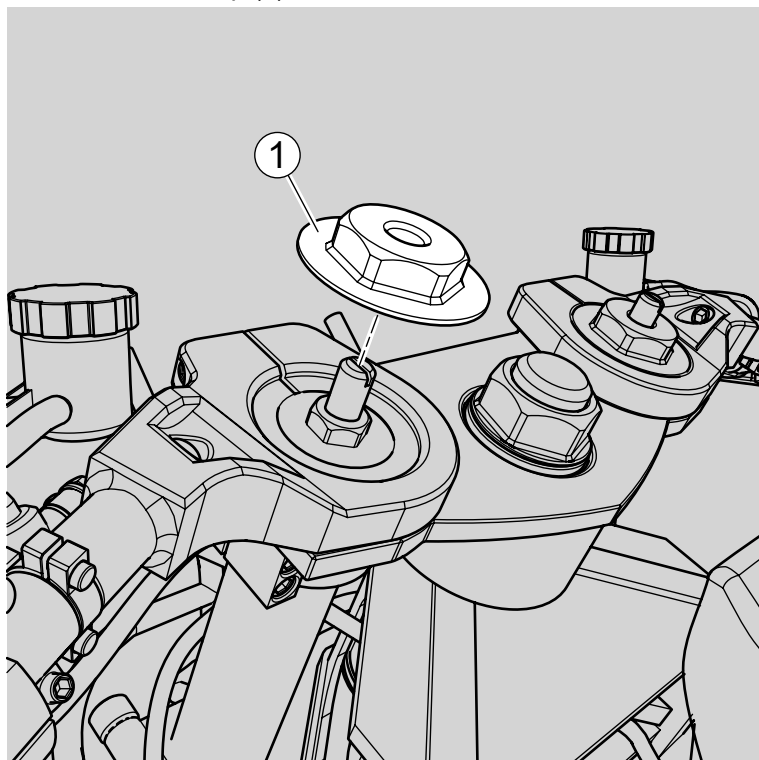
- 4. Unscrew the front wheel nut and remove the axle.
- 5. Remove the front wheel (4). Before disassembling the front wheel, make sure you have the necessary tools and equipment.



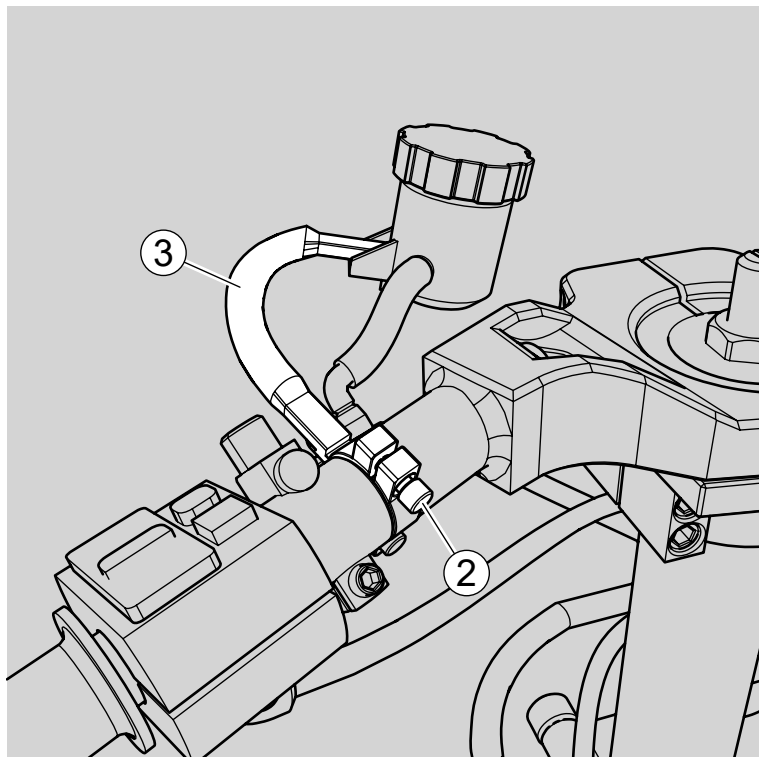
LEFT FRONT FORK REMOVAL

1.  **CAUTION:** Ensure that the vehicle is securely fastened to prevent any danger of it falling.

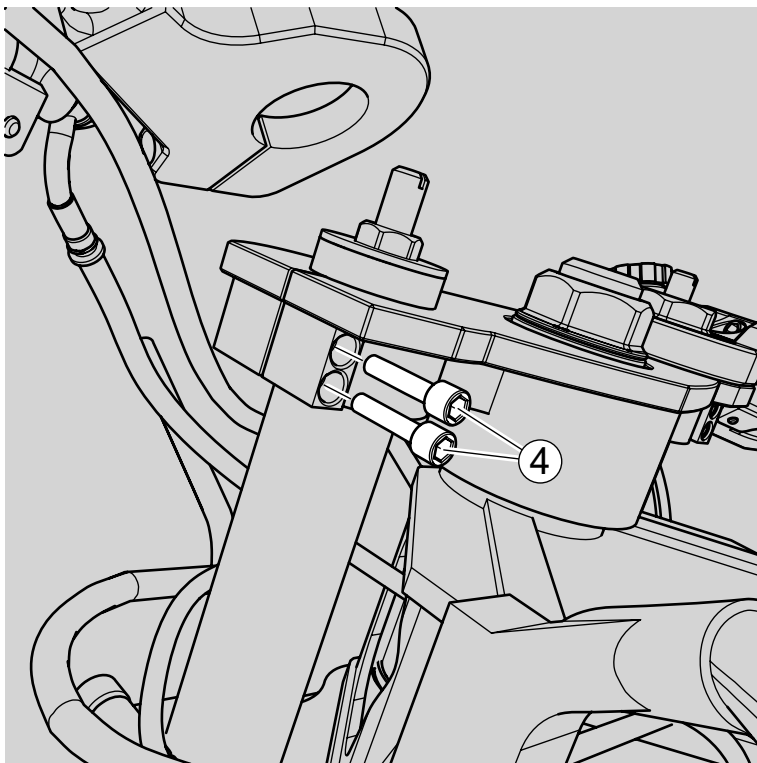
Remove the nut cap (1).



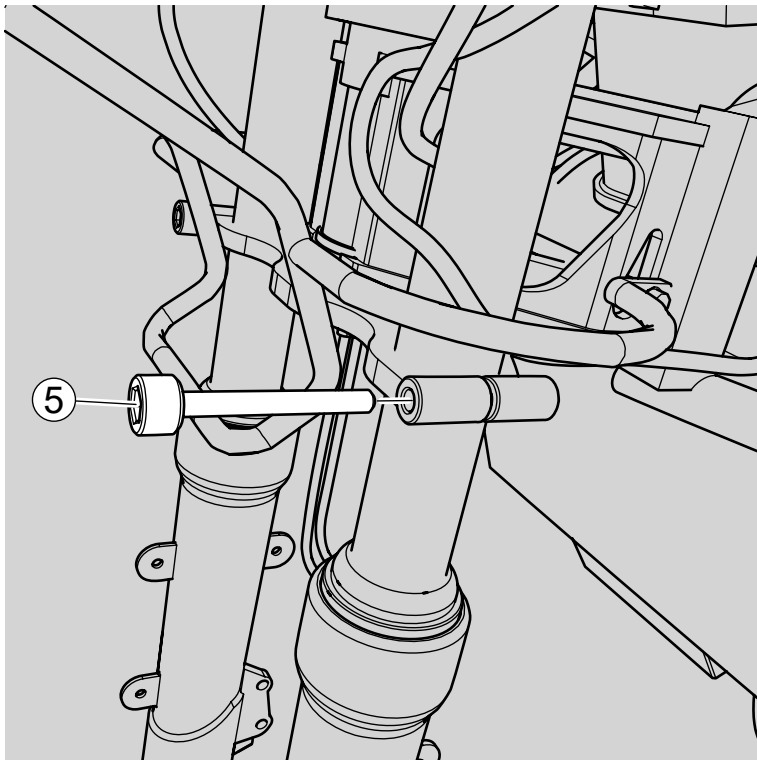
2. Loosen the bolt (2) that secures the bracket and rotate the bracket (3).



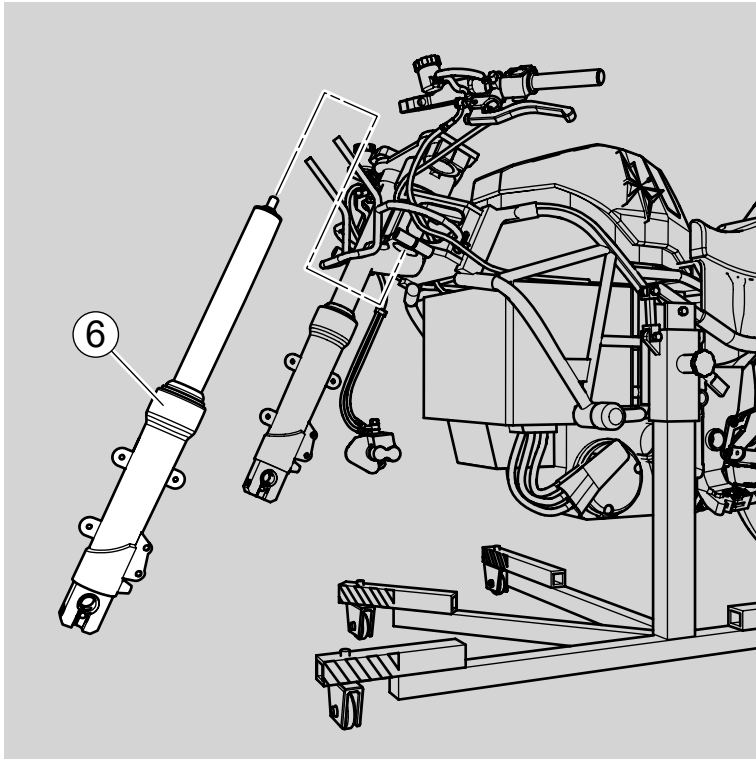
3. Unscrew the tie bolt that secures the left rudder handle.
4. Detach the left rudder handle and move it to the side.
5. Unscrew the upper tie bolts (4) that secures the steering bracket.



6. Unscrew the lower tie bolt (5) that secures the steering bracket.



7. Carefully remove the left front fork tube (6). Make sure to follow these steps carefully to prevent any damage to the vehicle.

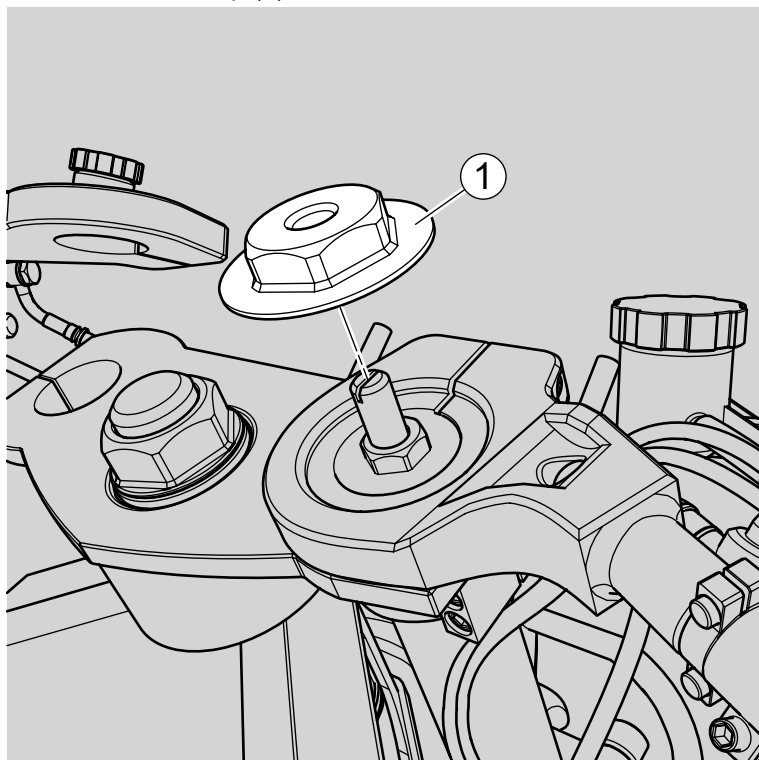


RIGHT FRONT FORK REMOVAL

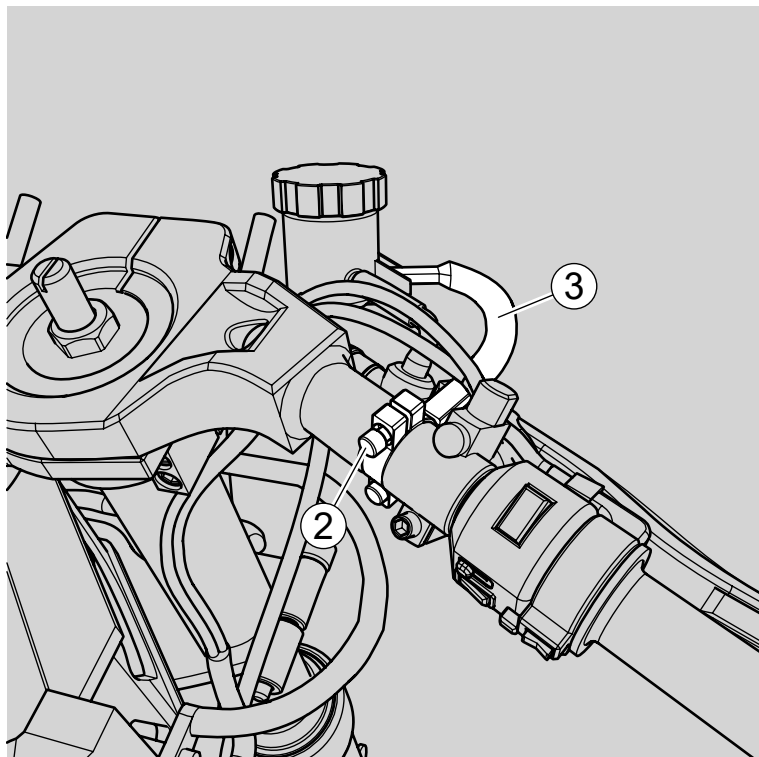


CAUTION: Ensure that the vehicle is securely fastened to prevent any danger of it falling.

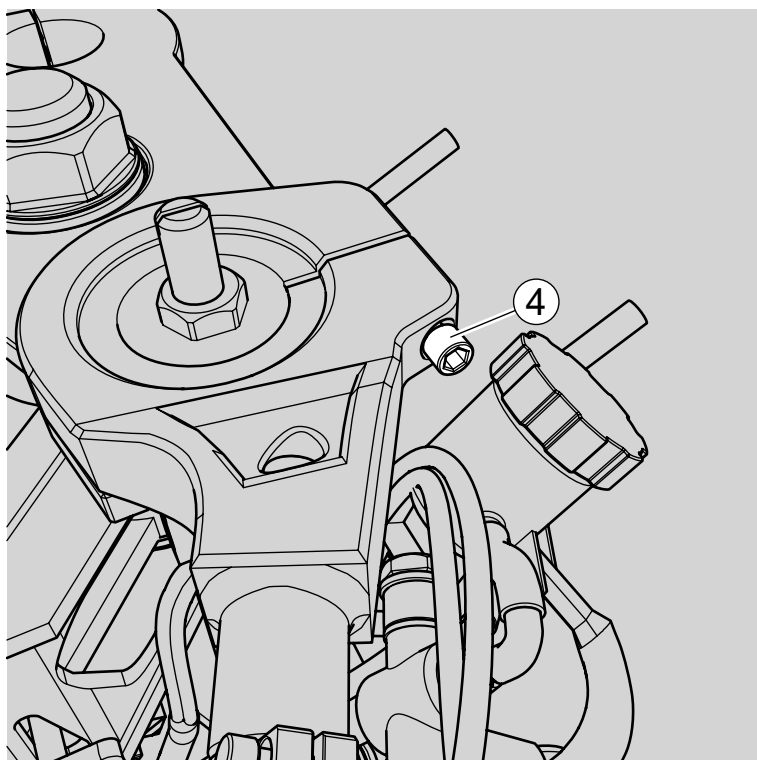
1. Remove the nut cap (1).



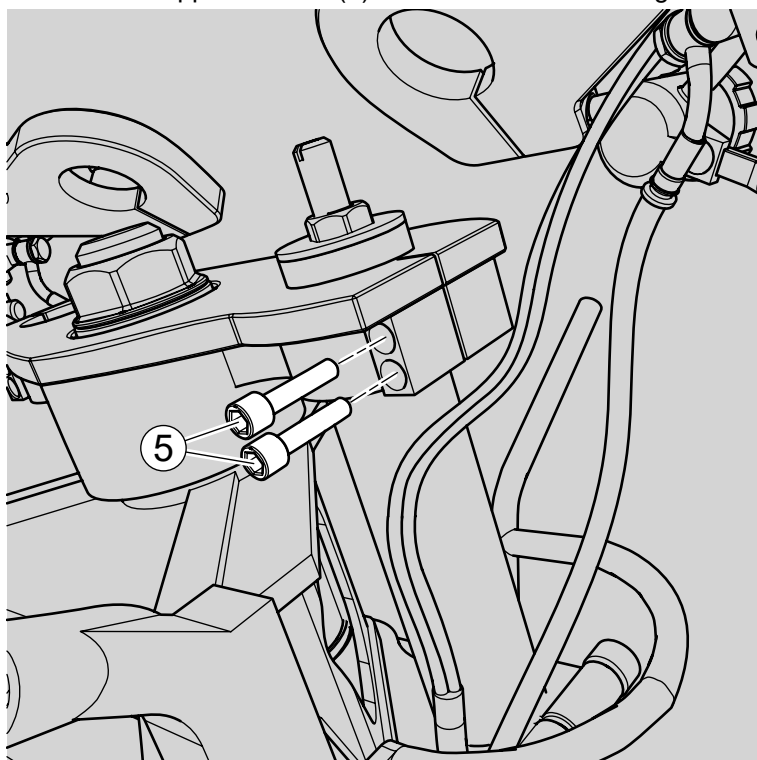
2. Loosen the bolt (2) that secures the bracket and rotate the bracket (3).



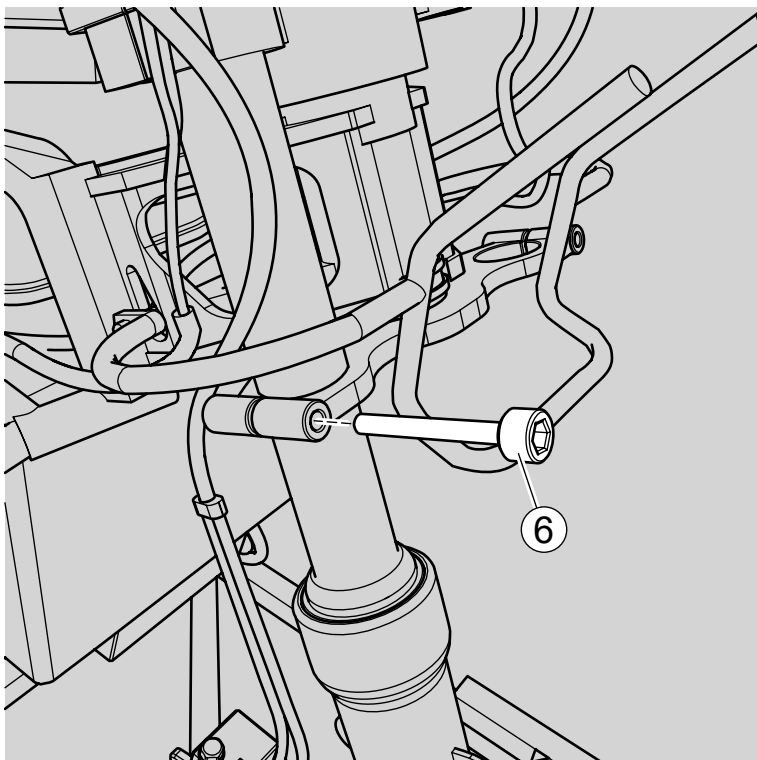
3. Loosen the tie bolt (4) that secures the right rudder handle.



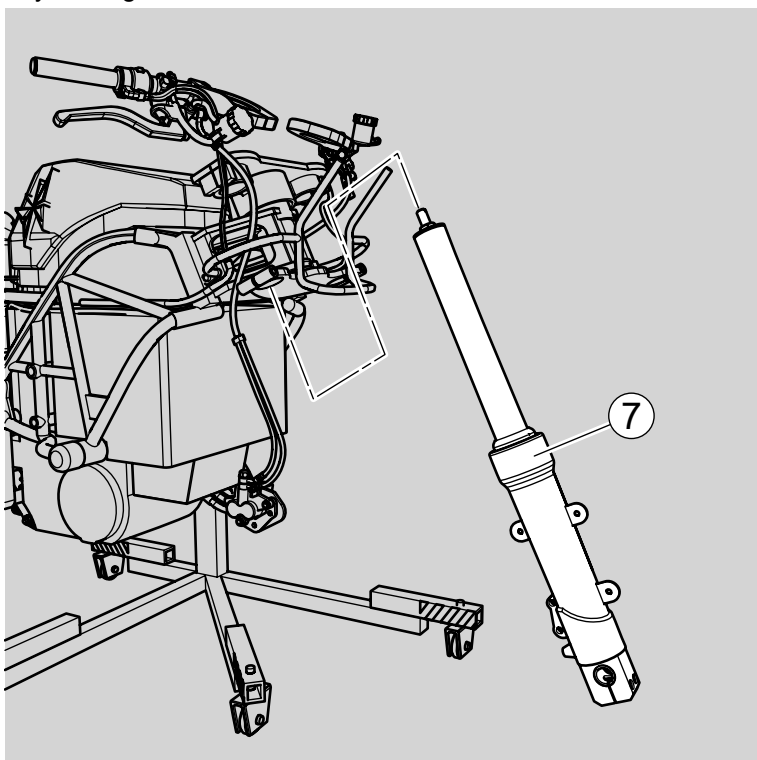
4. Detach the right rudder handle and move it to the side.
5. Unscrew the upper tie bolts (5) that secures the steering bracket.



6. Unscrew the lower tie bolt (6) that secures the steering bracket.



7. Carefully remove the right front fork tube (7). Make sure to follow these steps carefully to prevent any damage to the vehicle.



PARTS CATALOG

FRAME ASSY

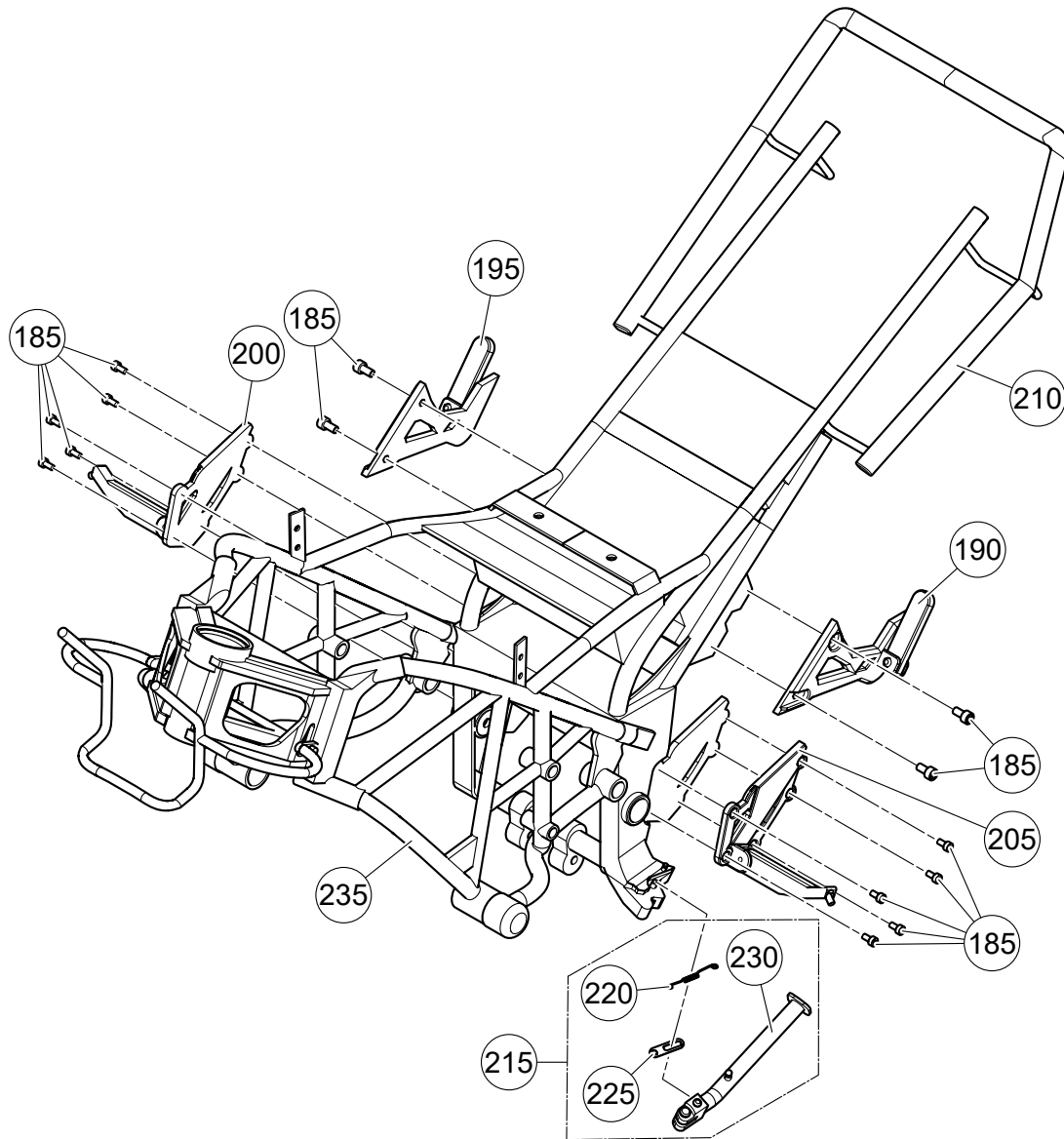


Figure 1: Frame - Exploded View

ITEM	DESCRIPTION	PART NO.	QTY
175	•FRAME ASSY	C3D-11000-E01	1
180	••STEPS	C3D-11200-E01	1
185	•••BOLT	C3D-70011-E01	14
190	•••HOLDER PASSENGER LEFT	C3D-11230-E01	1

ITEM	DESCRIPTION	PART NO.	QTY
195	•••HOLDER PASSENGER RIGHT	C3D-11240-E01	1
200	•••HOLDER RIGHT	C3D-11220-E01	1
205	•••HOLDER LEFT	C3D-11210-E01	1
210	••RAILING	C3D-11110-E01	1
215	••SIDE STAND	C3D-11300-E01	1
220	•••SPRING SIDE STAND	C3D-11311-E01	1
225	•••BRACKET SIDE STAND	C3D-11312-E01	1
230	•••BAR SIDE STAND	C3D-11310-E01	1
235	••FRAME	C3D-11100-E01	1

STEERING

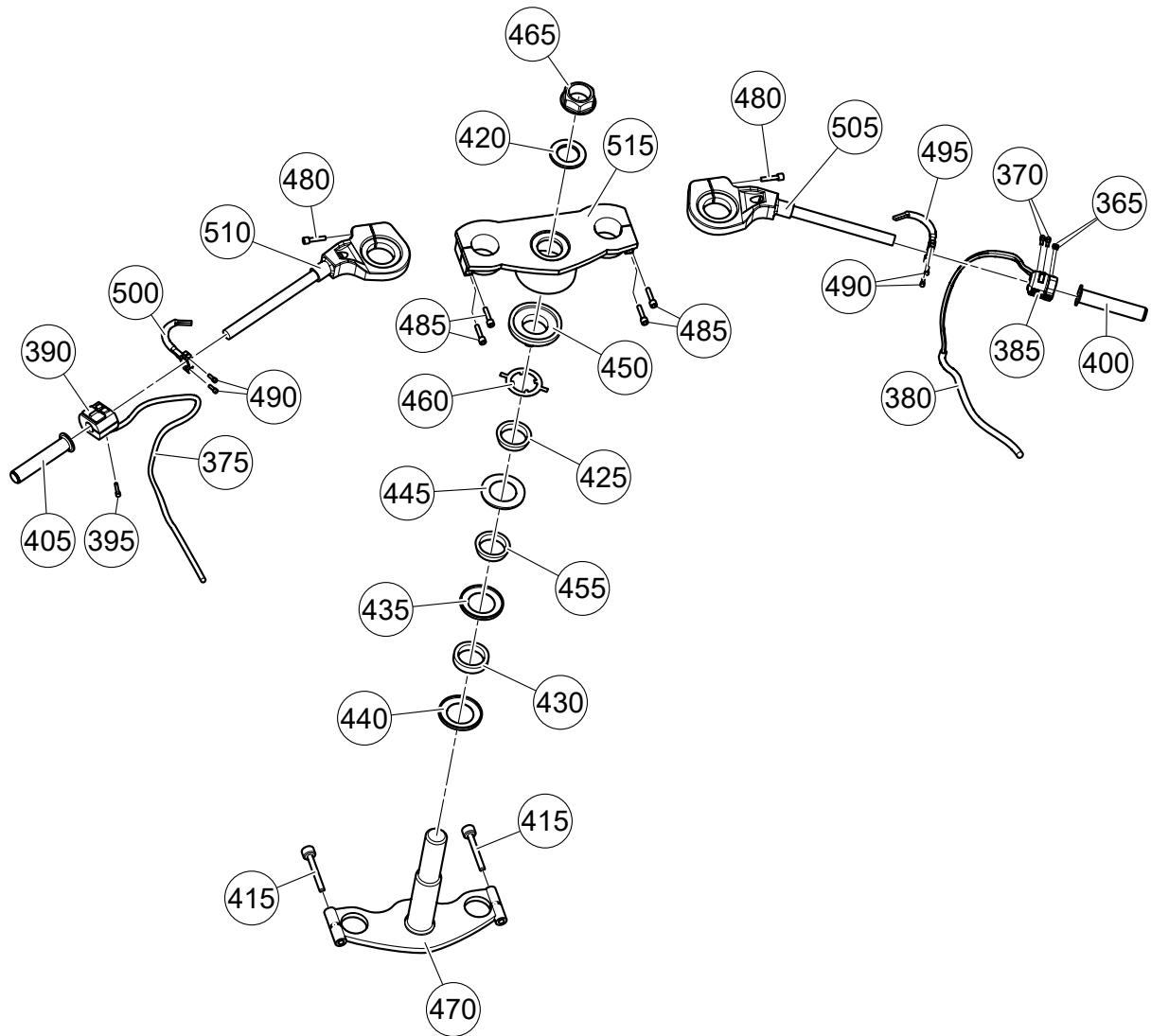


Figure 2: Steering - Exploded View

ITEM	DESCRIPTION	PART NO.	QTY
360	•STEERING	C3D-12000-E01	1
365	••BOLT	C3D-70212-E01	2
370	••BOLT	C3D-70112-E01	2
375	••SWITCH HANDLE CABEL	C3D-12330-E01	1
380	••THROTTLE CABLE	C3D-12430-E01	1
385	••SWITCH THROTTLE	C3D-12420-E01	1

ITEM	DESCRIPTION	PART NO.	QTY
390	••SWITCH HANDLE	C3D-12320-E01	1
395	•••BOLT	C3D-70512-E01	1
400	••THROTTLE GRIP	C3D-12410-E01	1
405	••GRIP	C3D-12310-E01	1
410	••STIM ASSY	C3D-12100-E01	1
415	•••BOLT FLANGE	C3D-70012-E01	2
420	•••WASHER	C3D-12121-E01	1
425	•••BEARING	C3D-12124-E01	1
430	•••BASHER	C3D-12127-E01	1
435	•••LOWER SEAL	C3D-12128-E01	1
440	•••SEAL	C3D-12129-E01	1
445	•••UPPER SEAL	C3D-12125-E01	1
450	•••DUST SEAL	C3D-12122-E01	1
455	•••UPPER BEARING	C3D-12126-E01	1
460	•••FIX WASHER	C3D-12123-E01	1
465	•••STEERING MOUNTING NUT	C3D-12120-E01	1
470	•••STIM	C3D-12110-E01	1
475	••RUDDER ASSY	C3D-12200-E01	1
480	•••BOLT	C3D-70512-E01	2
485	•••BOLT	C3D-70312-E01	4
490	•••BOLT	C3D-70212-E01	4
495	•••BRACKET RUDDER RIGHT	C3D-12240-E01	1
500	•••BRACKET RUDDER LEFT	C3D-12230-E01	1
505	•••CONTROL ARM RIGHT	C3D-12220-E01	1
510	•••CONTROL ARM LEFT	C3D-12210-E01	1
515	•••TOP BRIDGE	C3D-12201-E01	1

BRAKE

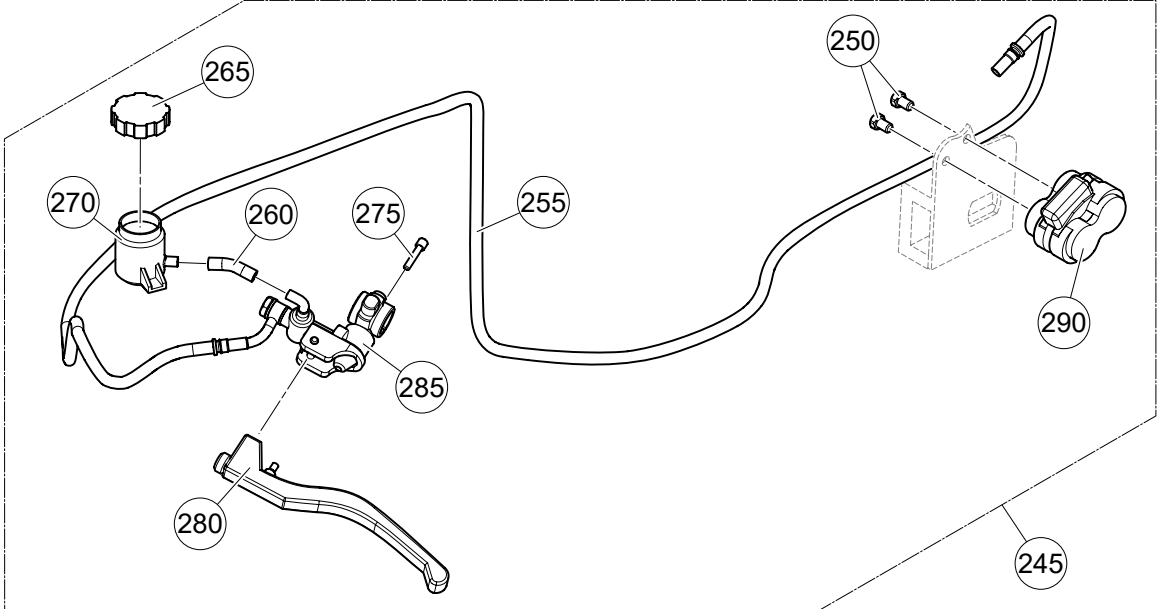


Figure 3: Rear Brake - Exploded View

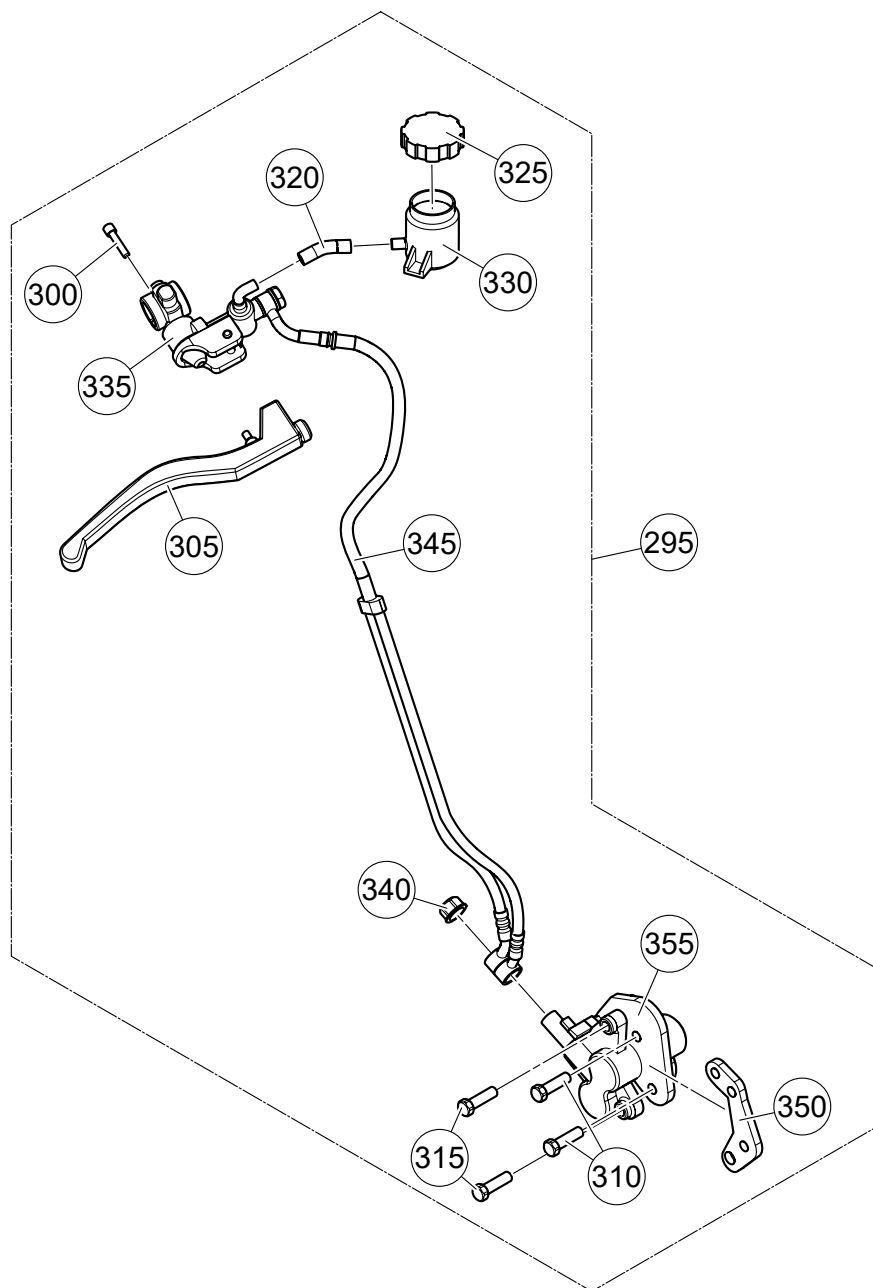


Figure 4: Front Brake - Exploded View

ITEM	DESCRIPTION	PART NO.	QTY
240	•BRAKE	C3D-13000-E01	1
245	••REAR BRAKE	C3D-13200-E01	1
250	•••BOLT	C3D-70413-E01	2
255	•••HOSE REAR	C3D-13240-E01	1
260	•••HOSE CUP	C3D-13233-E01	1
265	•••CAP LEFT	C3D-13232-E01	1

ITEM	DESCRIPTION	PART NO.	QTY
270	•••CUP LEFT	C3D-13230-E01	1
275	•••BOLT	C3D-70013-E01	1
280	•••LEVER LEFT	C3D-13210-E01	1
285	•••CYLINDER REAR BRAKE	C3D-13220-E01	1
290	•••CALIPER REAR	C3D-13250-E01	1
295	••FRONT BRAKE	C3D-13100-E01	1
300	•••BOLT	C3D-70113-E01	1
305	•••LEVER RIGHT	C3D-13110-E01	1
310	•••BOLT BRACKET	C3D-70213-E01	2
315	•••BOLT CALIPER FRONT	C3D-70513-E01	2
320	•••HOSE CUP	C3D-13133-E01	1
325	•••CAP FRONT	C3D-13132-E01	1
330	•••CUP FRONT	C3D-13130-E01	1
335	•••CYLINDER FRONT BRAKE	C3D-13120-E01	1
340	•••NUT FRONT BRAKE	C3D-13153-E01	1
345	•••HOSE FRONT	C3D-13140-E01	1
350	•••BRACKET	C3D-13152-E01	1
355	•••CALIPER FRONT	C3D-13150-E01	1

FRONT FORK

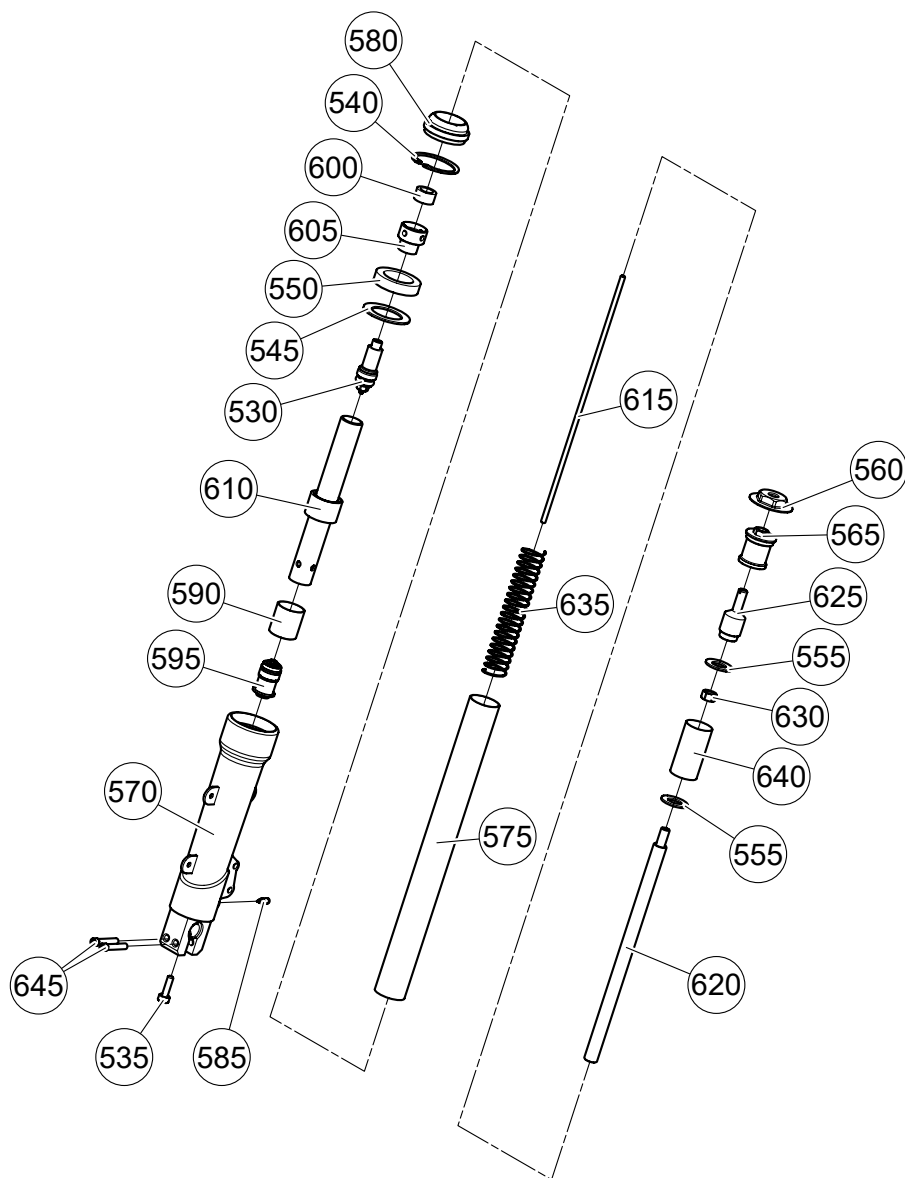


Figure 5: Front Fork - Exploded View

ITEM	DESCRIPTION	PART NO.	QTY	INFO
1	ELECTRIC MOTORCYCLE	C3D-00000-E01	1	
520	•FRONT FORK	C3D-21000-E01	1	
525	••FRONT FORK ASSY	C3D-21200-E01	2	Removal LH Removal RH
530	•••VALVE	C3D-21368-E01	1	
535	•••BOLT FORK	C3D-21367-E01	1	
540	•••SEAL STOPPER RING	C3D-21227-E01	1	

ITEM	DESCRIPTION	PART NO.	QTY	INFO
545	•••WASHER	C3D-21230-E01	1	
550	•••BUSHING	C3D-21228-E01	1	
555	•••WASHER FORK	C3D-21231-E01	2	
560	•••NUT CAP FORK	C3D-21221-E01	1	
565	•••COLLAR SPRING	C3D-21223-E01	1	
570	•••TUBE OUTER	C3D-21210-E01	1	
575	•••FORK TUBE	C3D-21220-E01	1	
580	•••SEAL DUST	C3D-21226-E01	1	
585	•••NEEDLE LOWER	C3D-21360-E01	1	
590	•••BUSHING	C3D-21362-E01	1	
595	•••VALVE	C3D-21365-E01	1	
600	•••BUSHING	C3D-21369-E01	1	
605	•••BUSHING	C3D-21370-E01	1	
610	•••DAMPER LOWER	C3D-21355-E01	1	
615	•••NEEDLE	C3D-21345-E01	1	
620	•••DAMPER	C3D-21350-E01	1	
625	•••NEEDLE BOLT	C3D-21222-E01	1	
630	•••NUT DAMPER	C3D-21340-E01	1	
635	•••COIL SPRING	C3D-21225-E01	1	
640	•••BUSHING	C3D-21224-E01	1	
645	••BOLT	C3D-70121-E01	4	

SWINGARM

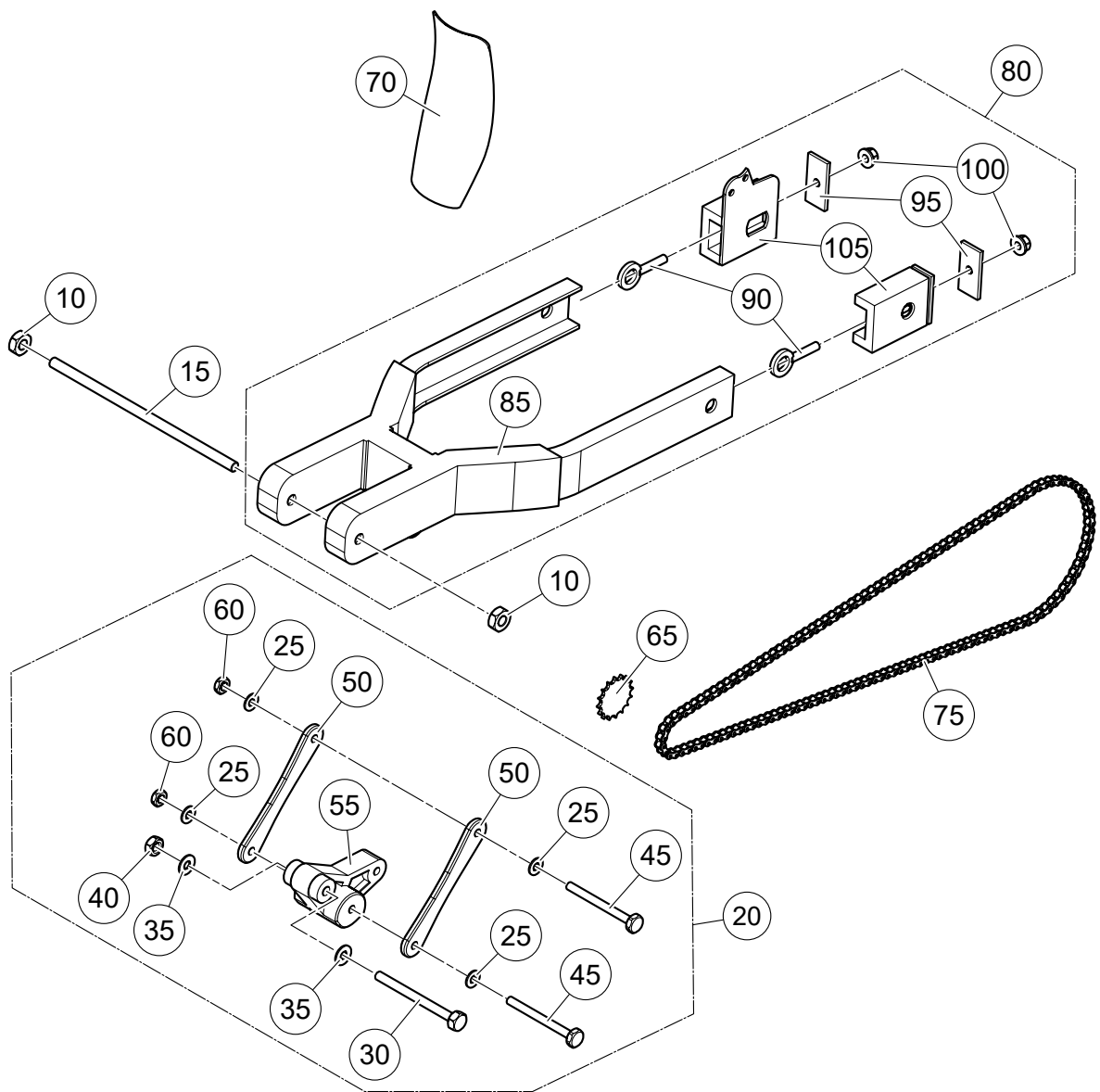


Figure 6: Swingarm - Exploded View

ITEM	DESCRIPTION	PART NO.	QTY
5	•SWINGARM	C3D-22000-E01	1
10	••NUT SWINGARM	C3D-70522-E01	2
15	••AXIS SWINGARM	C3D-22510-E01	1
20	••REAR CUSHION ASSY	C3D-22300-E01	1
25	•••WASHER	C3D-70222-E01	4
30	•••BOLT	C3D-70422-E01	1

ITEM	DESCRIPTION	PART NO.	QTY
35	•••WASHER	C3D-70722-E01	2
40	•••NUT	C3D-70622-E01	1
45	•••BOLT	C3D-70122-E01	2
50	•••SUSPENSION LEVER	C3D-22310-E01	2
55	•••BELL CRANK LEVER	C3D-22330-E01	1
60	•••NUT	C3D-70322-E01	2
65	••FRONT SPROCKET	C3D-22320-E01	1
70	••REAR FENDER	C3D-22410-E01	1
75	••SUSPENSION LEVER	C3D-22310-E01	1
80	••SWINGARM ASSY	C3D-22200-E01	1
85	•••SWINGARM	C3D-22210-E01	1
90	•••WASHER	C3D-70222-E01	2
95	•••COLLAR	C3D-22222-E01	2
100	•••BOLT	C3D-70122-E01	2
105	•••ADJUSTER CHAIN	C3D-22221-E01	1

REAR ABSORBER

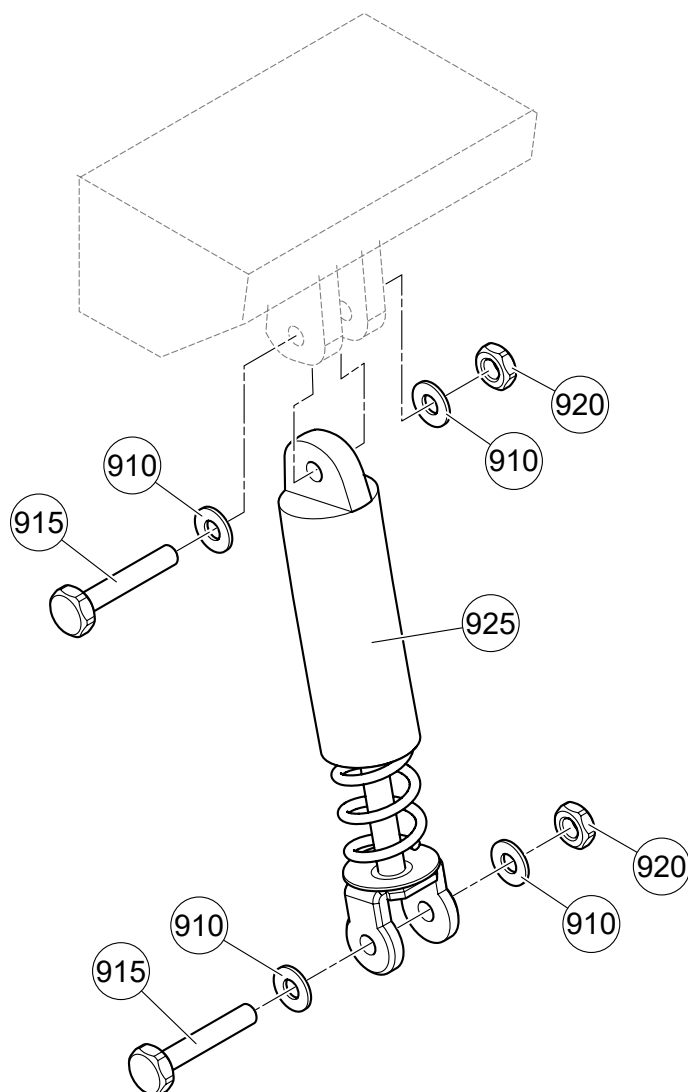


Figure 7: Rear Absorber - Exploded View

ITEM	DESCRIPTION	PART NO.	QTY
905	•REAR ABSORBER	C3D-23000-E01	1
910	••WASHER	C3D-70222-E01	2
915	••BOLT	C3D-70123-E01	1
920	••NUT	C3D-70223-E01	1
925	••ABSORBER	C3D-23100-E01	1

FRONT WHEEL ASSY

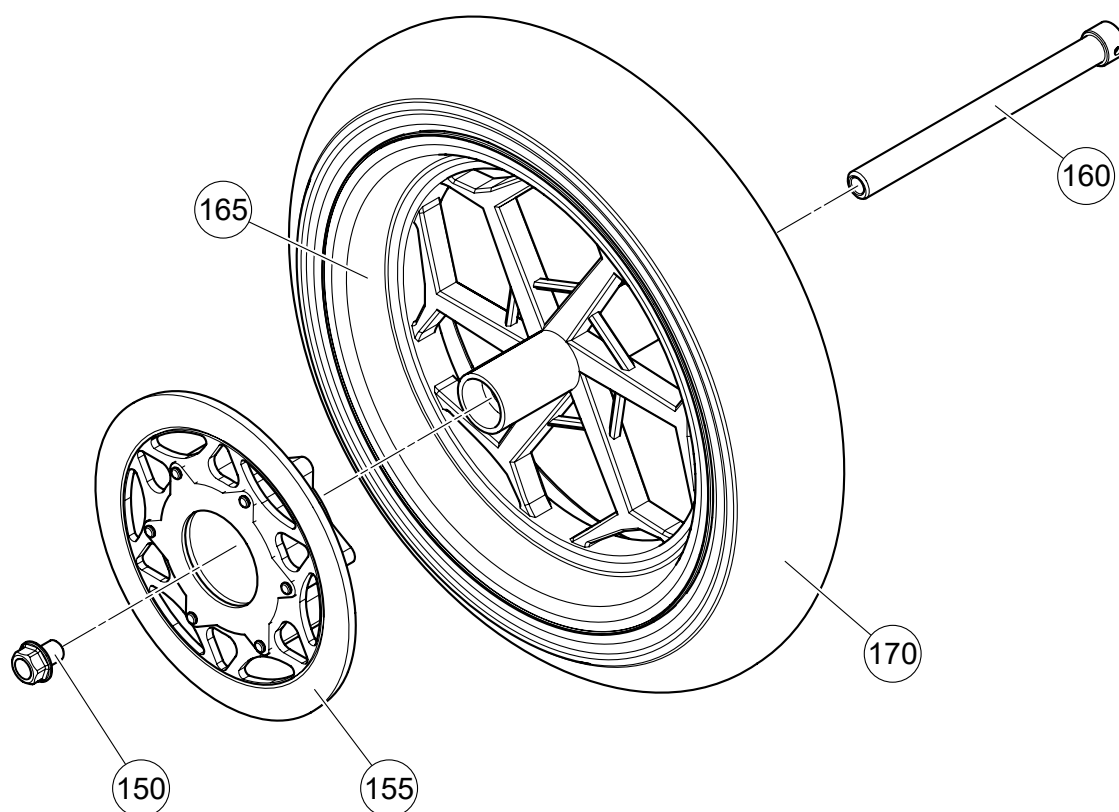


Figure 8: Front Wheel - Exploded View

ITEM	DESCRIPTION	PART NO.	QTY	INFO
145	•FRONT WHEEL ASSY	C3D-24000-E01	1	Removal
150	••NUT FRONT WHEEL	C3D-70324-E01	1	
155	••FRONT BRAKE DISK	C3D-24300-E01	1	
160	••AXLE FRONT WHEEL	C3D-24135-E01	1	
165	••FRONT WHEEL	C3D-24130-E01	1	
170	••TIRE FRONT	C3D-24200-E01	1	

REAR WHEEL ASSY

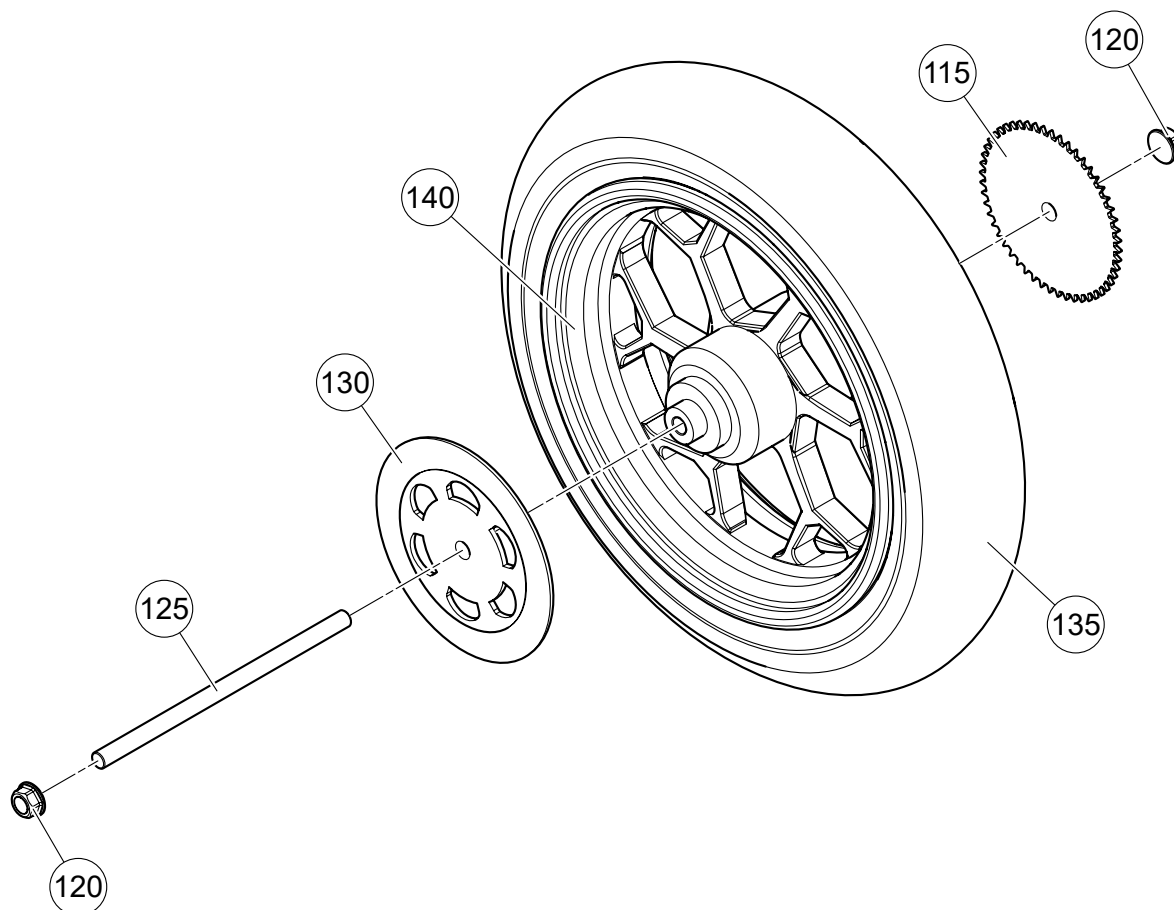


Figure 9: Rear Wheel - Exploded View

ITEM	DESCRIPTION	PART NO.	QTY
110	•REAR WHEEL ASSY	C3D-25000-E01	1
115	••REAR SPROCKET	C3D-25410-E01	1
120	••NUT REAR WHEEL	C3D-70325-E01	2
125	••AXLE REAR WHEEL	C3D-25135-E01	1
130	••REAR BRAKE DISK	C3D-25300-E01	1
135	••TIRE REAR	C3D-25200-E01	1

ITEM	DESCRIPTION	PART NO.	QTY
140	••REAR WHEEL	C3D-25130-E01	1

MOTOR

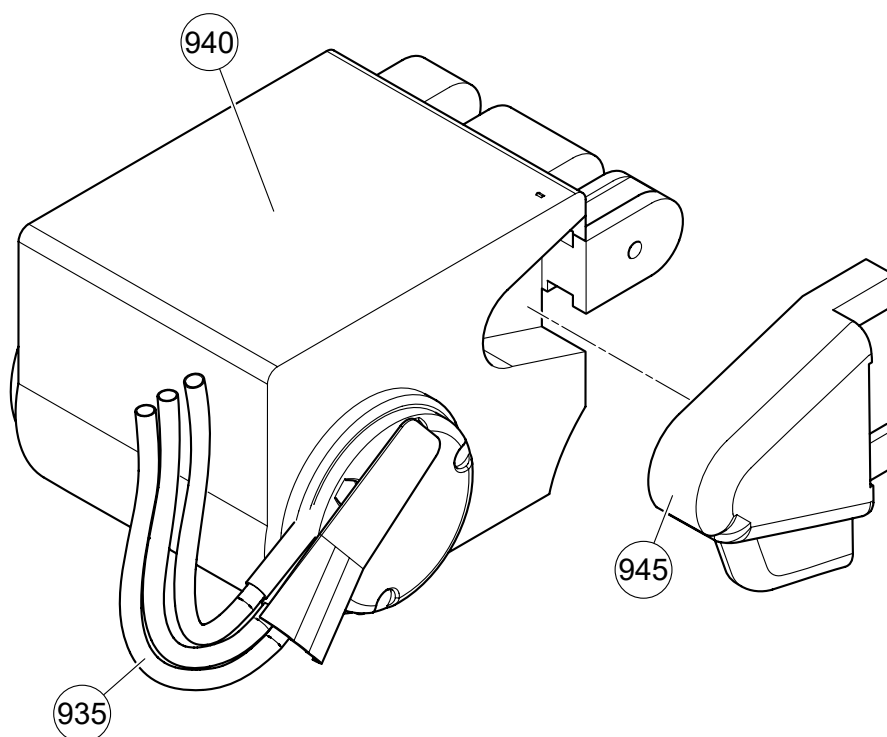


Figure 10: Motor - Exploded View

ITEM	DESCRIPTION	PART NO.	QTY
930	•MOTOR	C3D-31000-E01	1
935	••POWER CABEL	C3D-31210-E01	1
940	••ELECTRIC ENGINE	C3D-31100-E01	1
945	••CHAIN COVER	C3D-31110-E01	1

BATTERY

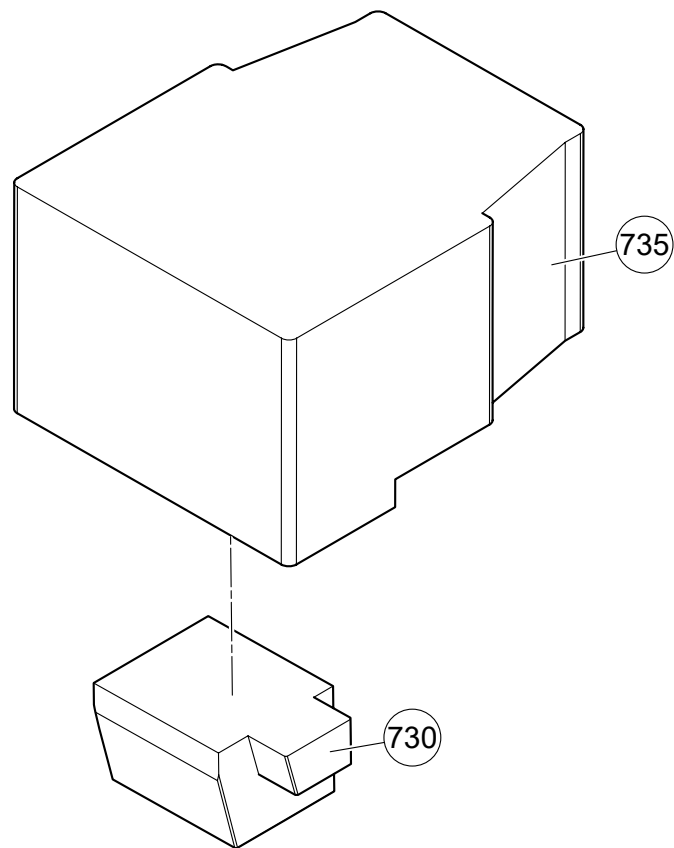


Figure 11: Battery - Exploded View

ITEM	DESCRIPTION	PART NO.	QTY
725	•BATTERY	C3D-35000-E01	1
730	••CONTROLLER	C3D-35210-E01	1
735	••BATTERY BOX	C3D-35110-E01	1

COWLING

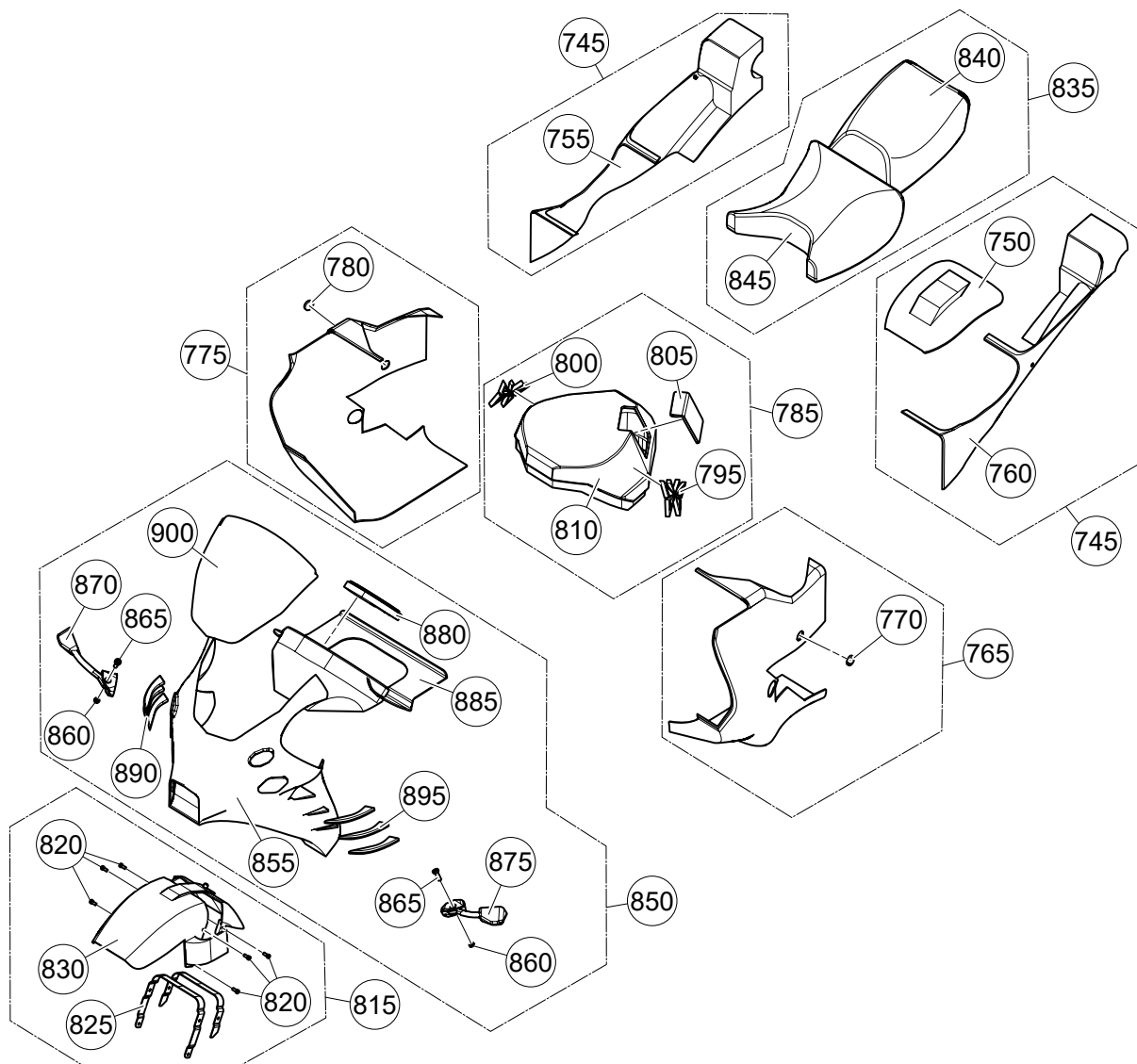


Figure 12: Cowling - Exploded View

ITEM	DESCRIPTION	PART NO.	QTY	INFO
740	•COWLING	C3D-41000-E01	1	
745	••SIDE COVER	C3D-41700-E01	1	
750	•••REAR FENDER	C3D-41730-E01	1	
755	•••RIGHT SIDE COVER	C3D-41720-E01	1	
760	•••LEFT SIDE COVER	C3D-41710-E01	1	
765	••COWLING LEFT	C3D-41500-E01	1	
770	•••PLUG LEFT	C3D-41510-E01	1	
775	••COWLING RIGHT	C3D-41400-E01	1	

ITEM	DESCRIPTION	PART NO.	QTY	INFO
780	***PLUG RIGHT	C3D-41410-E01	1	
785	**TANK ASSY	C3D-41300-E01	1	
795	***EMBLEM	C3D-41311-E01	1	
800	***EMBLEM RIGHT	C3D-41312-E01	1	
805	***CAP TANK	C3D-41320-E01	1	
810	***TANK	C3D-41310-E01	1	
815	**FRONT FENDER ASSY	C3D-41100-E01	1	Removal
820	***BOLT	C3D-70141-E01	6	
825	***FENDER BRACKET	C3D-41110-E01	1	
830	***FENDER	C3D-41120-E01	1	
835	**SEAT	C3D-41800-E01	1	
840	***TANDEM SEAT	C3D-41820-E01	1	
845	***SINGLE SEAT	C3D-41810-E01	1	
850	**COWL BODY	C3D-41200-E01	1	
855	***FRONT COWLING	C3D-41220-E01	1	
860	***NUT	C3D-70341-E01	2	
865	***BOLT	C3D-70241-E01	2	
870	***MIRROR RIGHT	C3D-41280-E01	1	
875	***MIRROR LEFT	C3D-41270-E01	1	
880	***METER PANEL	C3D-41260-E01	1	
885	***COVER	C3D-41250-E01	1	
890	***COVER FRAME RIGHT	C3D-41240-E01	1	
895	***COVER FRAME LEFT	C3D-41230-E01	1	
900	***WINDSCREEN	C3D-41210-E01	1	

LIGHT

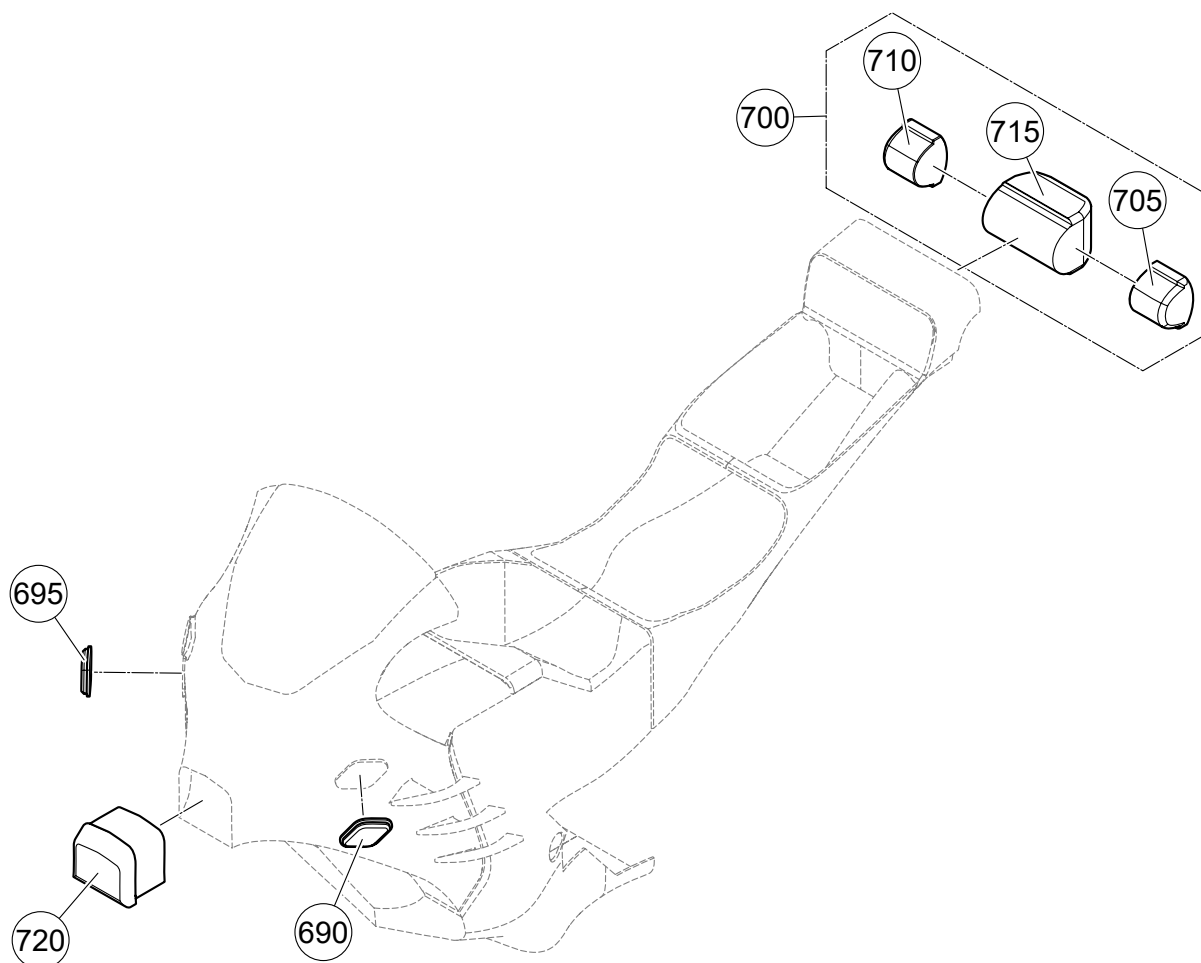


Figure 13: Light - Exploded View

ITEM	DESCRIPTION	PART NO.	QTY
685	•LIGHT	C3D-51000-E01	1
690	••FRONT LEFT FLASHER	C3D-51100-E01	1
695	••FRONT RIGHT FLASHER	C3D-51200-E01	1
700	••REAR COMBINATION LAMP	C3D-51400-E01	1
705	•••REAR LEFT FLASHER	C3D-51410-E01	1
710	•••REAR RIGHT FLASHER	C3D-51420-E01	1

ITEM	DESCRIPTION	PART NO.	QTY
715	•••TAILLIGHT	C3D-51430-E01	1
720	••HEADLIGHT LAMP	C3D-51300-E01	1