
Pump Maintenance Instruction -

Table of contents	Page
Preliminary requirements.....	1
Procedure.....	2
Requirements after job completion.....	4

List of tables	Page
1 Required conditions.....	1
2 Support equipment.....	1
3 Consumables, materials and expendables.....	1
4 Spares.....	2
5 Required conditions.....	4

List of figures	Page
1 Pump Cross-Section.....	3
2 Pump Gear Wear.....	4

Preliminary requirements

Required conditions

Table 1 Required conditions

Title	Data module/Technical publication
None	

Support equipment

Table 2 Support equipment

Name	Identification No	Qty	Remarks
None			

Consumables, materials and expendables

Table 3 Consumables, materials and expendables

Name	Identification No	Qty	Remarks
None			

Spares

Table 4 Spares

Name	Identification No	Qty	Remarks
None			

Safety conditions

None

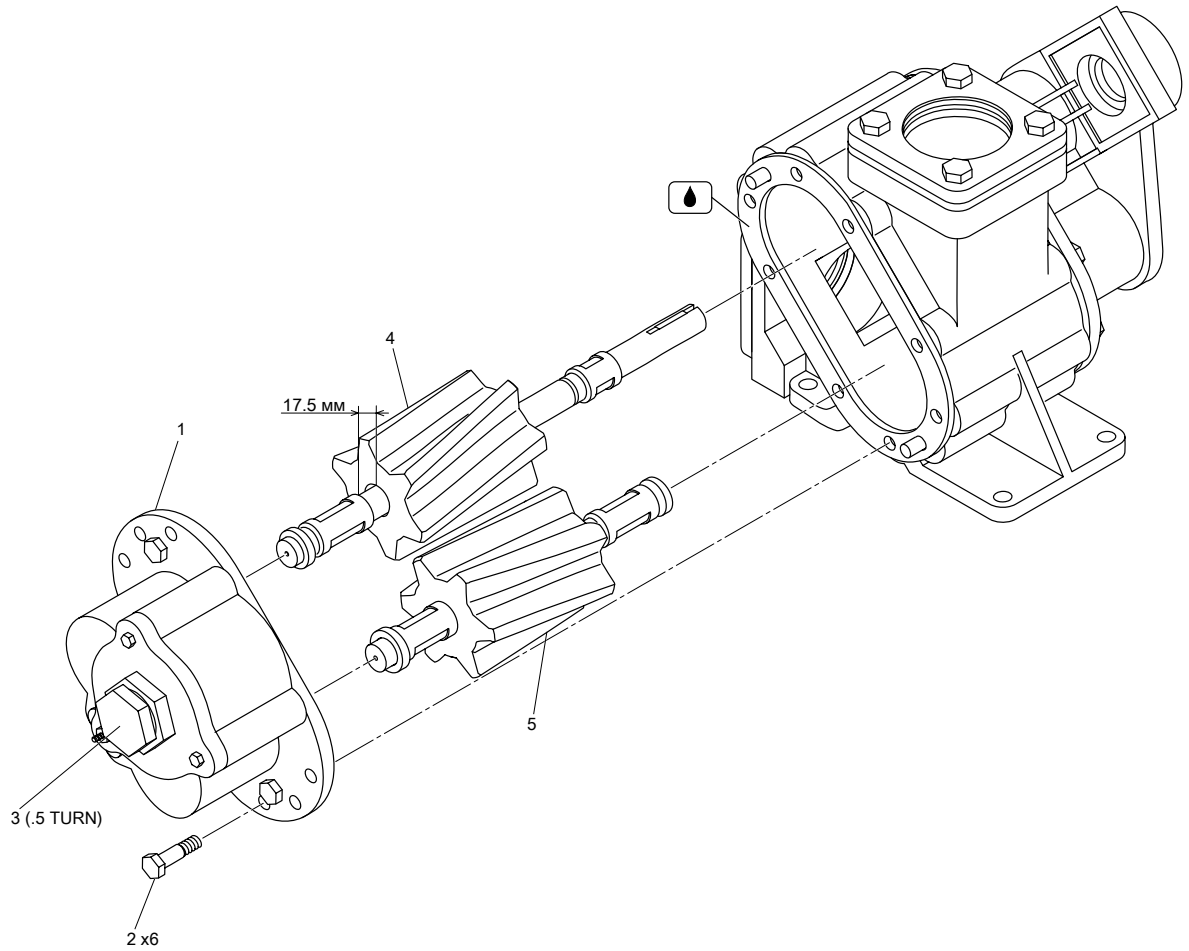
Procedure

- 1 Remove the Pump Valve Housing ([1, Fig 1](#)) using number 15 wrench ([Fig 1](#))
- 2 Inspect the rotors ([4, Fig 1](#), [5, Fig 1](#)) for cracks and fouling. ([Fig 2](#))
Replace as appropriate using Maintenance Procedure JC0346.
- 3 Prior to re-installation of the Pump Valve Housing, ensure the gasket is resealed with the correct gasket sealant.
- 4 Reinstall the Pump Valve Housing.
- 5 Reinstall the Pump Valve.

Note

Ensure that all bolts ([2, Fig 1](#)) are tightened to 25nm.

- 6 Loosen the pump adjuster ([3, Fig 1](#)) by .5 turn.



ICN-IMAGE002

Figure 1 Pump Cross-Section



ICN-IMAGE001

Figure 2 Pump Gear Wear

Requirements after job completion

Required conditions

Table 5 Required conditions

Title	Data module/Technical publication
None	