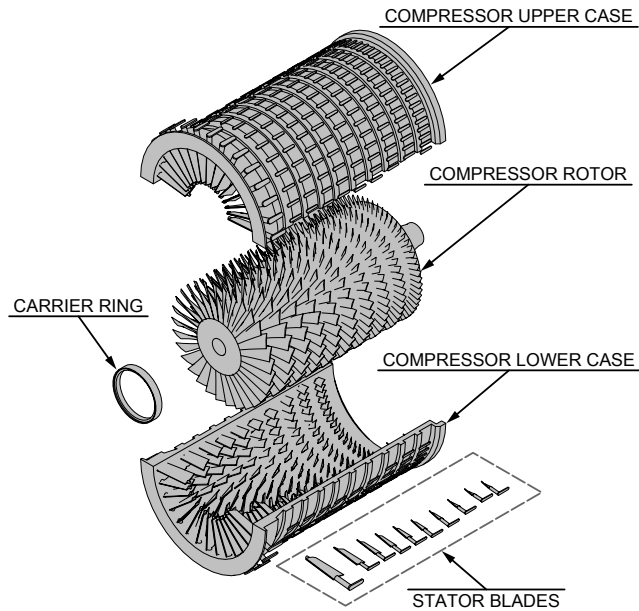


TURBINE C3D-MANUAL-DEMO-02 ASSEMBLY

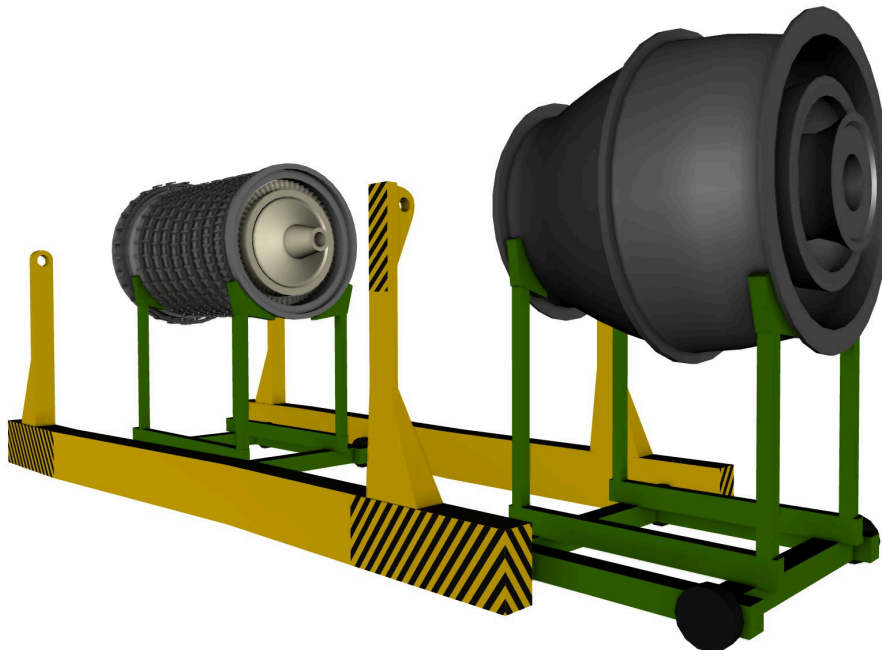
1. COMPRESSOR MODULE ASSEMBLY.

- a) INSTALL COMPRESSOR ROTOR M-003-003.
- b) INSTALL COMPRESSOR UPPER CASE M-003-002 WITH BLADES.
- c) [ASSEMBLE STATOR BLADES CONTROL SYSTEM.](#)



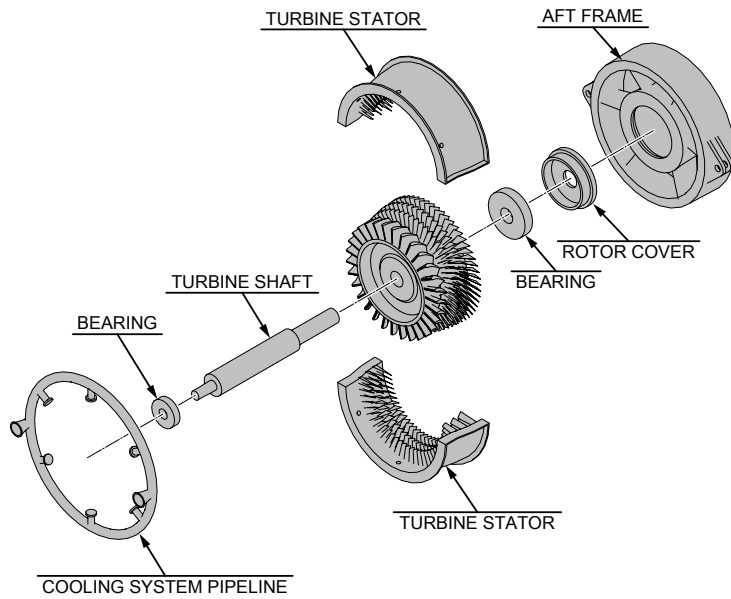
2. COMBUSTION CHAMBER ASSEMBLY.

- a) [ATTACH COMBUSTION CHAMBER M-004.](#)



3. TURBINE MODULE ASSEMBLY.

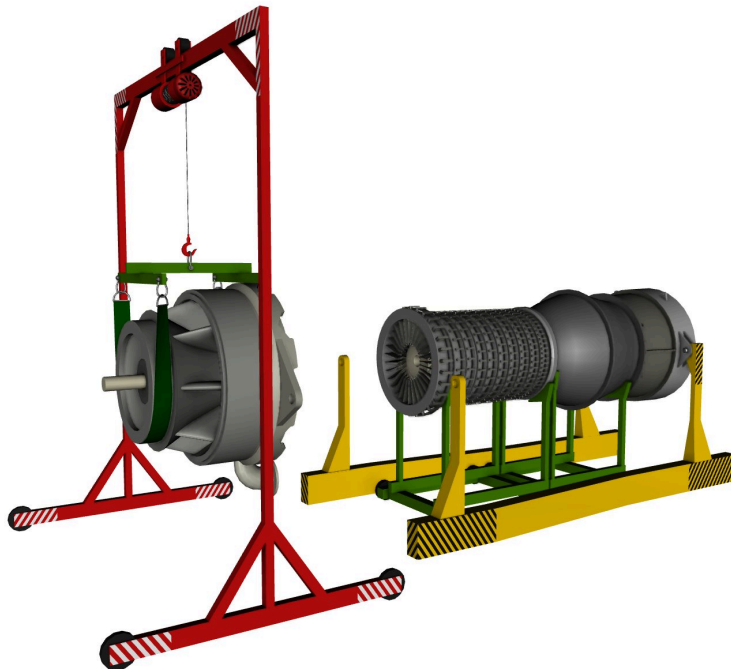
- a) INSTALL LPT ROTOR M-005-001.
- b) INSTALL LPT UPPER CASE.
- c) [ATTACH LOW PRESSURE TURBINE \(LPT\).](#)



- d) ATTACH AFT FRAME M-005-003.
- e) REMOVE THE LPT WAY.

4. FORWARD SUMP ASSEMBLY.

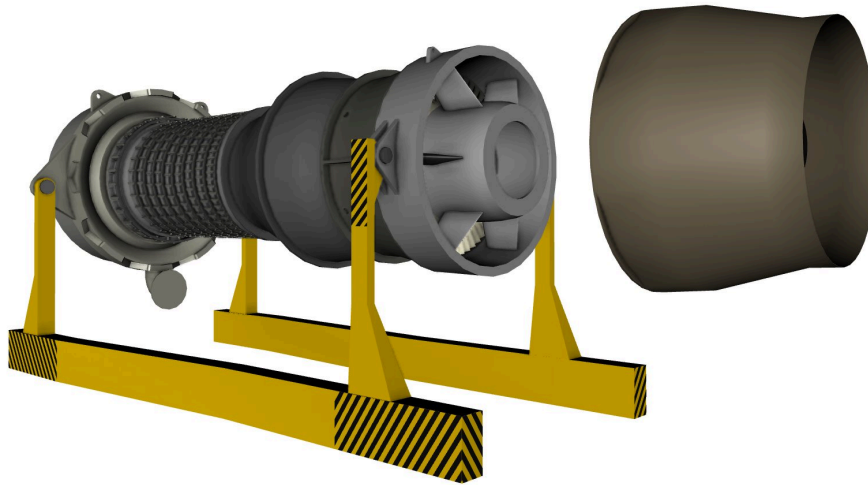
- a) [ATTACH FORWARD SUMP M-002.](#)



- b) REMOVE THE COMBUSTION CHAMBER WAY.
- c) REMOVE THE COMPRESSOR WAY.

5. INLET/OUTLET NOZZLES ASSEMBLY.

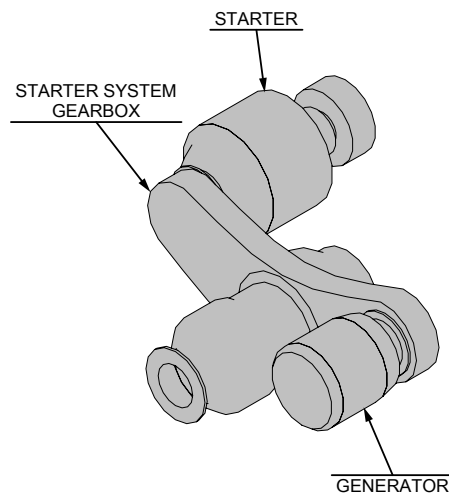
- a) **INSTALL OUTLET NOZZLE MODULE M-006.**



- b) INSTALL REAR PART OF INLET NOZZLE IN-002.
 c) INSTALL FRONT PART OF INLET NOZZLE IN-001.

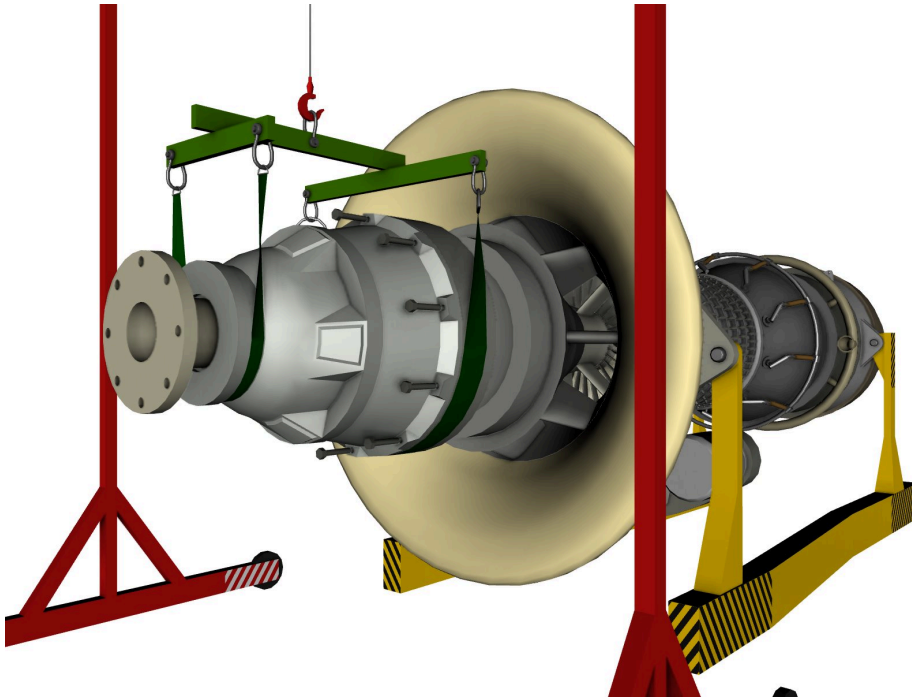
6. TURBINE SYSTEMS ASSEMBLY.

- a) ASSEMBLE COOLING SYSTEM PIPELINE T-001.
 b) ASSEMBLE FUEL PIPELINE M-004-004 AND FUEL NOZZELS M-004-005.
 c) **ATTACH STARTER M-007.**



7. REDUCTOR COVER INSTALLATION.

- a) ATACH REDUCTOR MODULE M-001.
- b) **INSTALL 10 BOLTS (NUT KOR-10).**



- c) INSTALL LOWER COVER RC-002.
- d) INSTALL UPPER COVER RC-001.