
Turbine-S1000D ASSEMBLY

Table of contents

Page

Preliminary requirements	1
Procedure	2
Requirements after job completion	14

List of figures

1	Turbine rotor installation	3
2	Combustion chamber installation	5
3	LPT	7
4	Forward sump	9
5	Turbine systems	11
6	Assembled turbine	13

List of tables

1	Required conditions	1
2	Support equipment	1
3	Consumables, materials and expendables	2
4	Spares	2
5	Required conditions	14

Preliminary requirements

Required conditions

Table 1 Required conditions

Action/Condition	Data module/Technical publication
None	

Support equipment

Table 2 Support equipment

Name	Identification/Reference	Quantity	Remarks
PORTAL CRANE	Part No 9850448-02	1 EA	

Applicable to: All

TURBINE-A-000-00-00-00AA-720A-A

UNCLASSIFIED

Table 2 Support equipment (Continued)

Name	Identification/Reference	Quantity	Remarks
STAPEL	Part No S1259-001	1 EA	

Consumables, materials and expendables

Table 3 Consumables, materials and expendables

Name	Identification/Reference	Quantity	Remarks
None			

Spares

Table 4 Spares

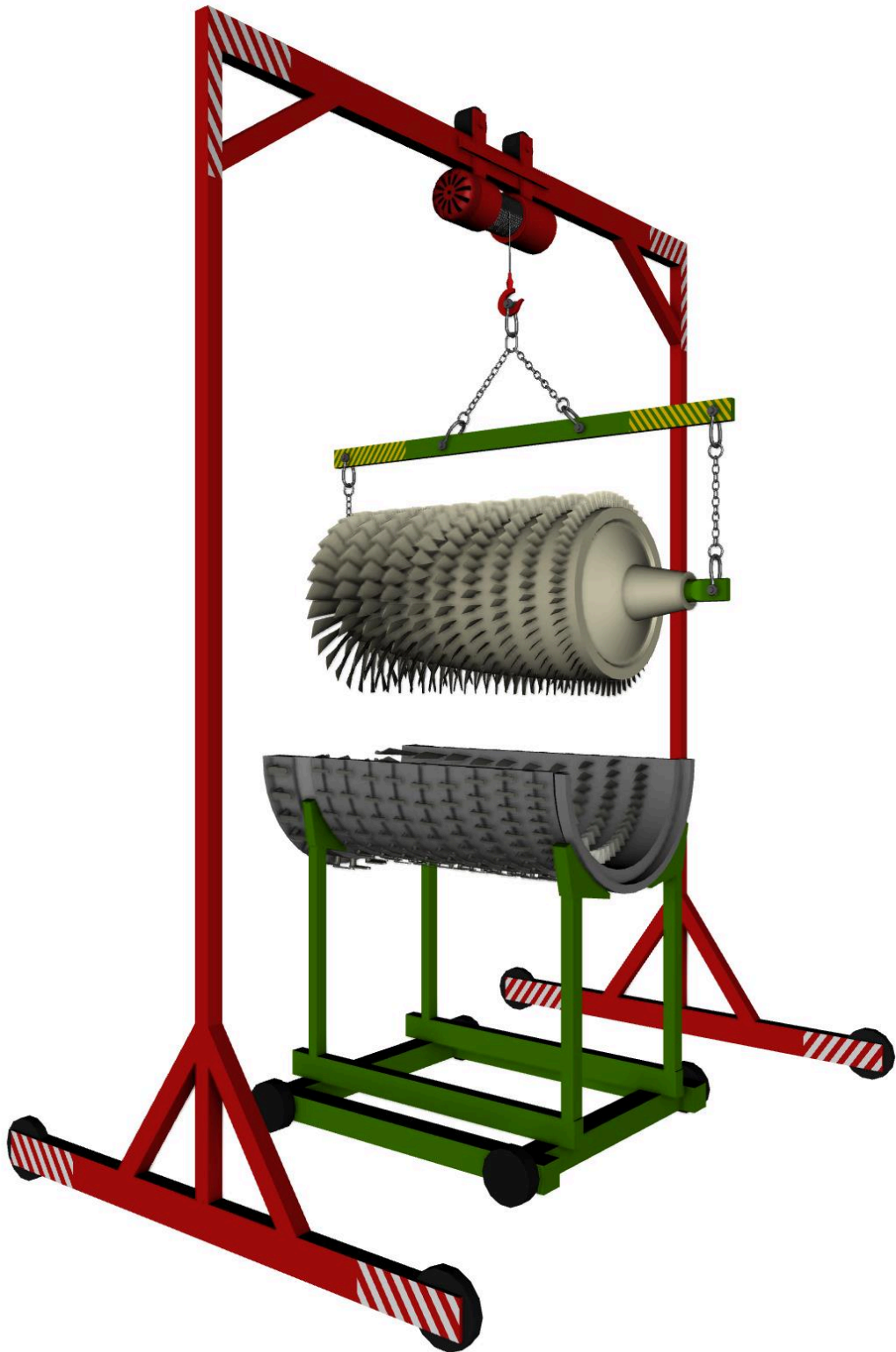
Name	Identification/Reference	Quantity	Remarks
None			

Safety conditions

None

Procedure

- 1 COMPRESSOR MODULE ASSEMBLY.
- 1.1 INSTALL COMPRESSOR ROTOR M-003-003.

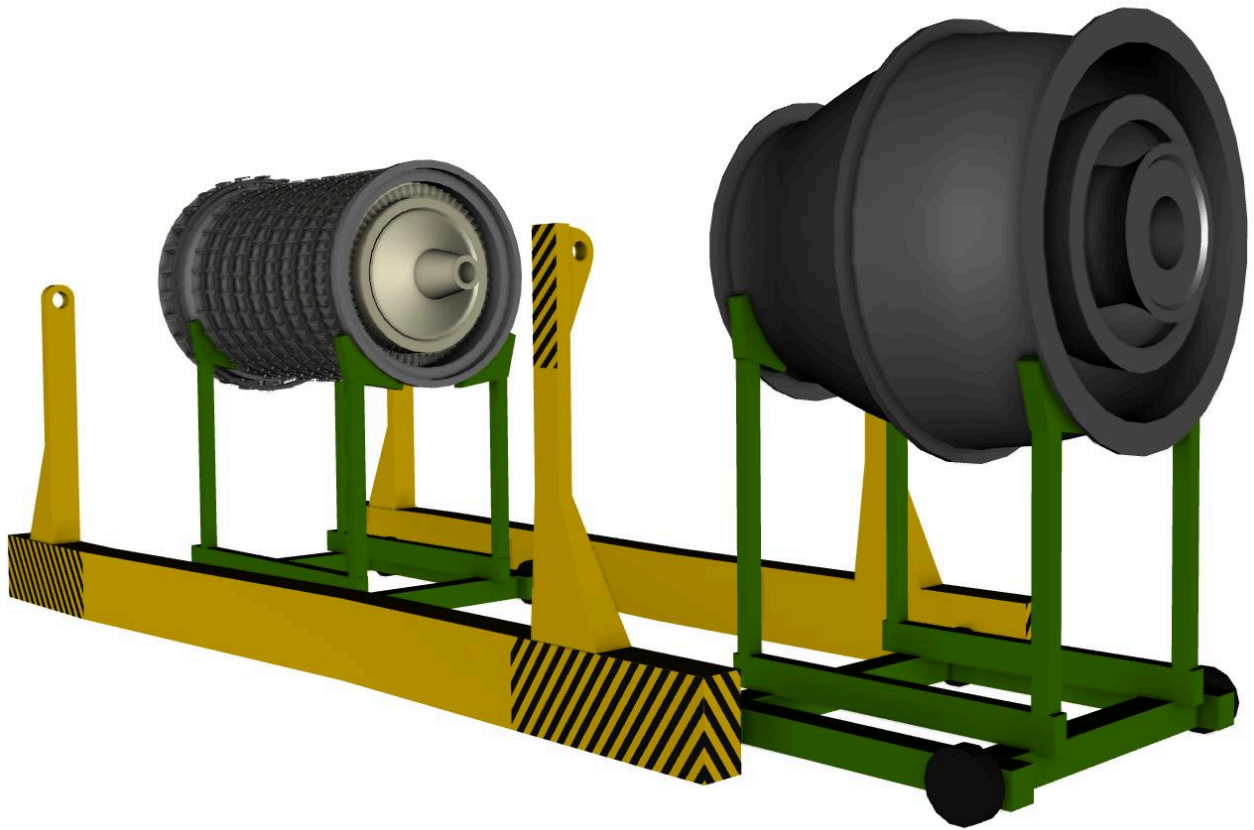


ICN-TURBINE-A-000000-0-00000-00011-A-01-1

Fig 1 Turbine rotor installation

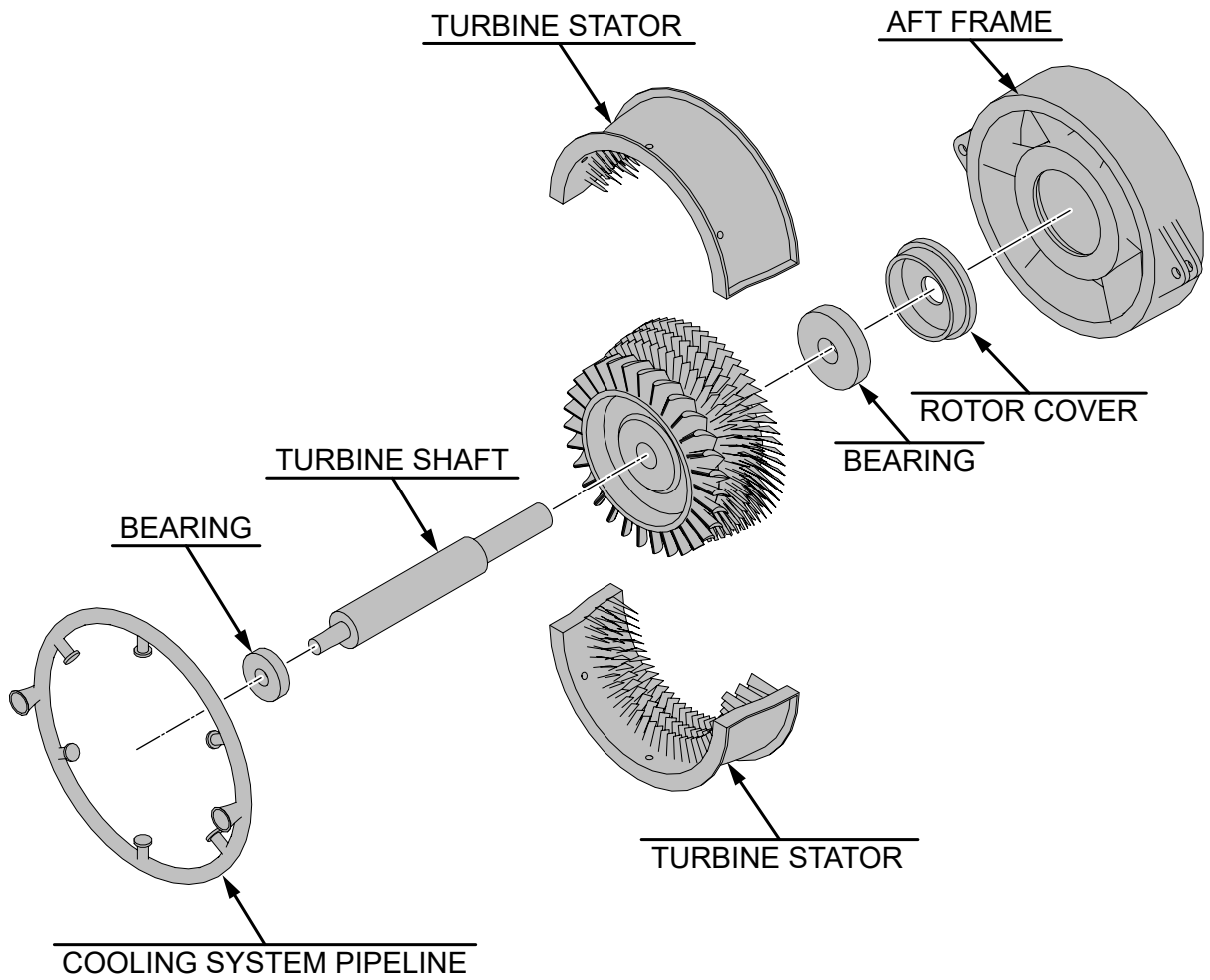
UNCLASSIFIED

- 1.2 INSTALL COMPRESSOR UPPER CASE M-003-002 WITH BLADES.
- 1.3 ASSEMBLE STATOR BLADES CONTROL SYSTEM.
- 2 COMBUSTION CHAMBER ASSEMBLY.
- 2.1 ATTACH COMBUSTION CHAMBER M-004.



ICN-TURBINE-A-000000-0-00000-00012-A-01-1
Fig 2 Combustion chamber installation

3 LPT MODULE ASSEMBLY.



ICN-TURBINE-A-000000-0-00000-00013-A-01-1

Fig 3 LPT

UNCLASSIFIED

- 3.1 INSTALL LPT ROTOR M-005-001.

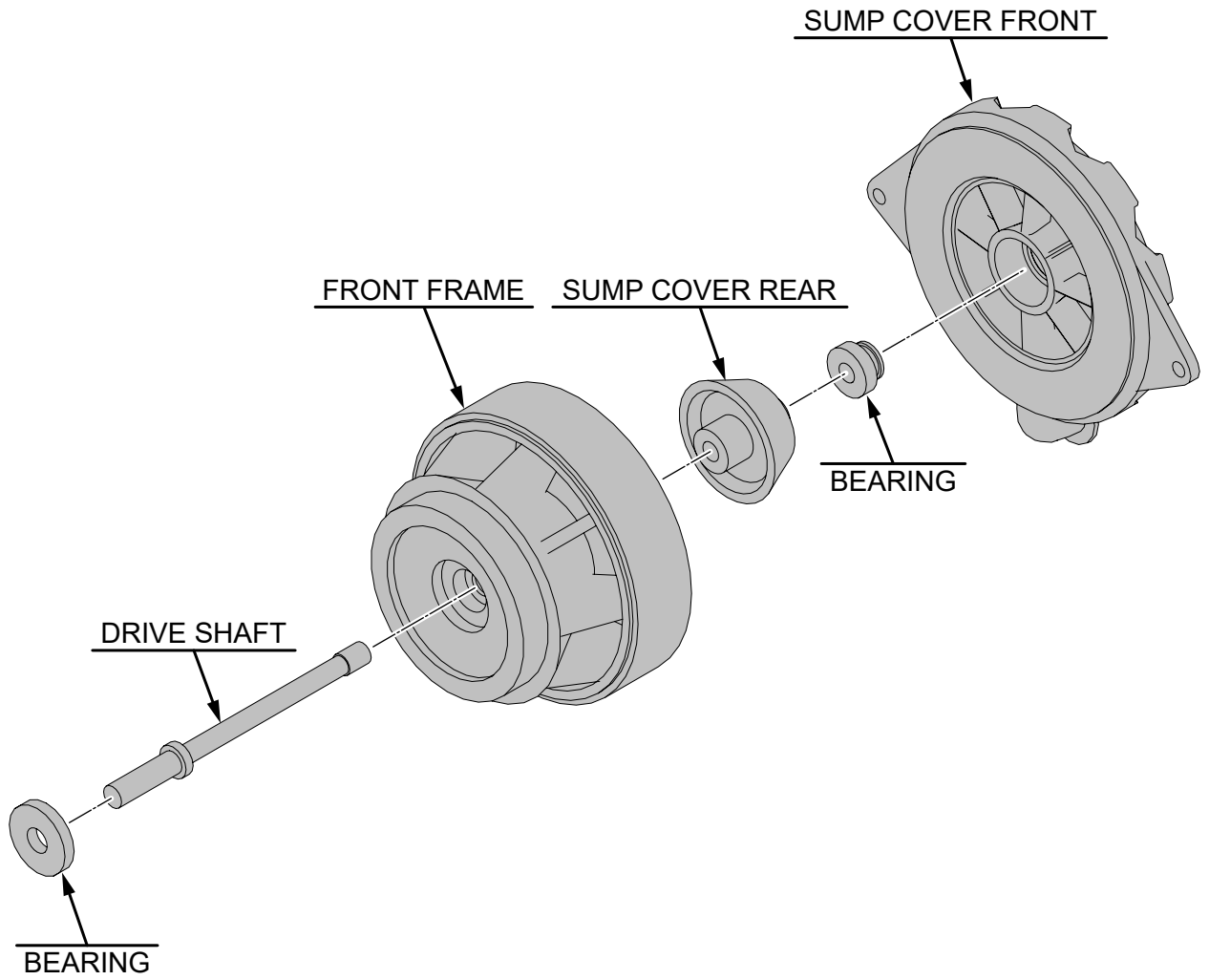
- 3.2 INSTALL LPT UPPER CASE.

- 3.3 ATTACH LOW PRESSURE TURBINE (LPT).

- 3.4 ATTACH AFT FRAME M-005-003.

- 3.5 REMOVE THE TURBINE WAY.

- 4 FORWARD SUMP ASSEMBLY.



ICN-TURBINE-A-000000-0-00000-00014-A-01-1
Fig 4 Forward sump

UNCLASSIFIED

- 4.1 ATTACH FORWARD SUMP M-002.

- 4.2 REMOVE THE COMBUSTION CHAMBER WAY.
- 4.3 REMOVE THE COMPRESSOR WAY.

- 5 INLET/OUTLET NOZZLES ASSEMBLY.

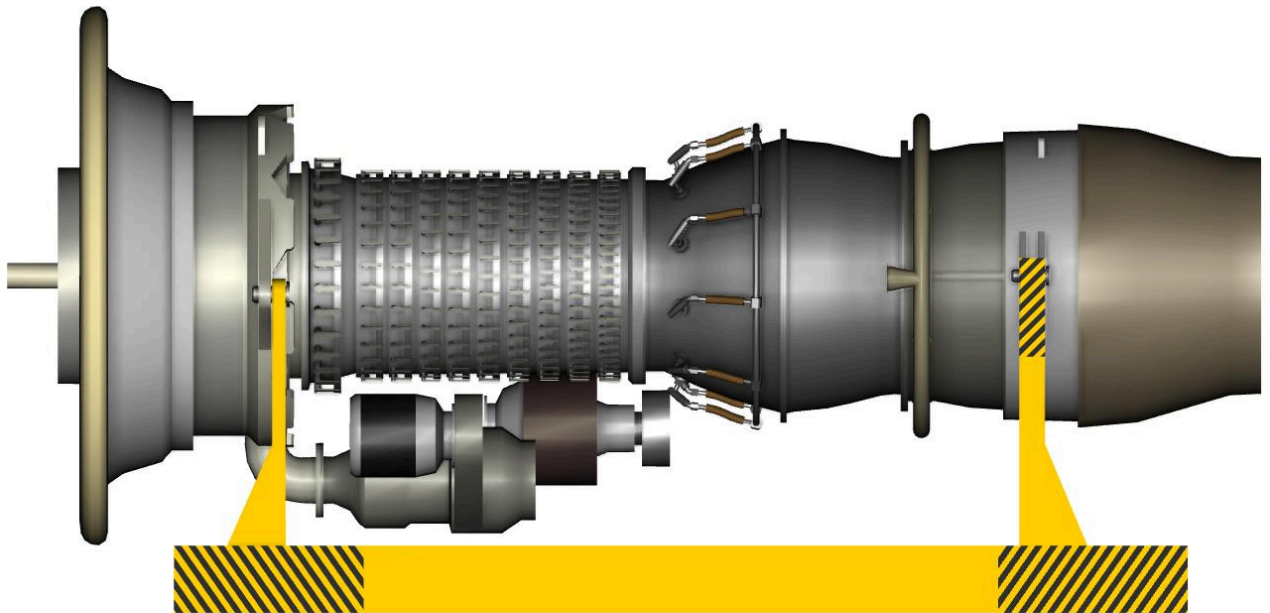
- 5.1 INSTALL OUTLET NOZZLE MODULE M-006.

- 5.2 INSTALL REAR PART OF INLET NOZZLE IN-002.
- 5.3 INSTALL FRONT PART OF INLET NOZZLE IN-001.

- 6 TURBINE SYSTEMS ASSEMBLY.

- 6.1 ASSEMBLE COOLING SYSTEM PIPELINE T-001.

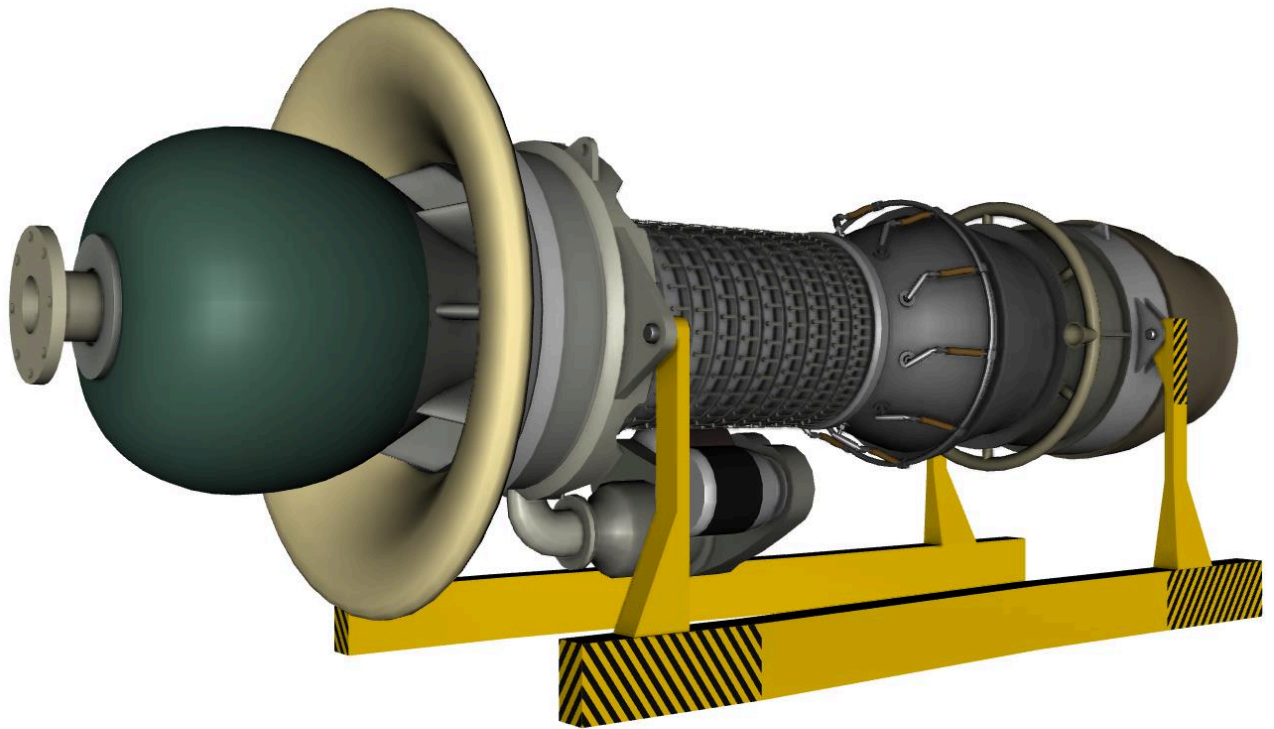
- 6.2 ASSEMBLE FUEL PIPELINE M-004-004 AND FUEL NOZZELS M-004-005.
- 6.3 ATTACH STARTER M-007.



ICN-TURBINE-A-000000-0-00000-00015-A-01-1
Fig 5 Turbine systems

UNCLASSIFIED

-
- 7 REDUCTOR COVER INSTALLATION.
 - 7.1 ATTACH REDUCTOR MODULE M-001.
 - 7.2 INSTALL 10 BOLTS (NUT KOR-10).
 - 7.3 INSTALL LOWER COVER RC-002.
 - 7.4 INSTALL UPPER COVER RC-001.



ICN-TURBINE-A-000000-0-00000-00016-A-01-1
Fig 6 Assembled turbine

Requirements after job completion

Required conditions

Table 5 Required conditions

Action/Condition	Data module/Technical publication
None	
