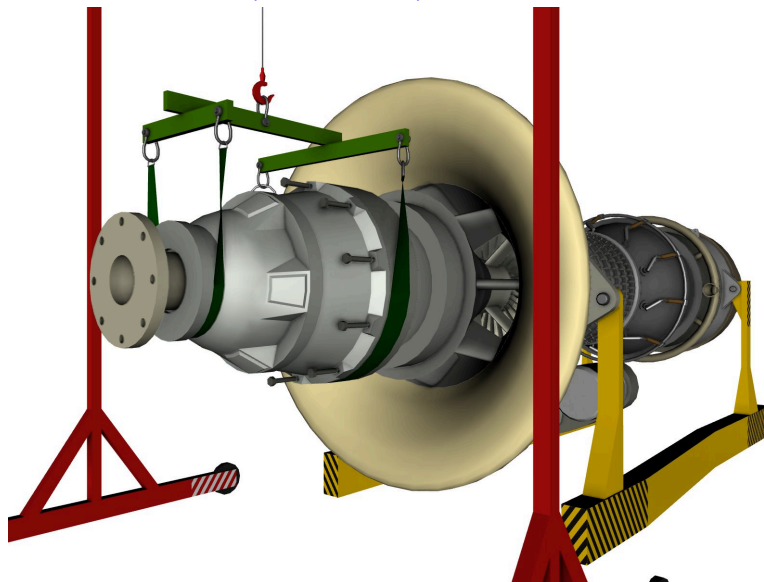


TURBINE C3D-MANUAL-DEMO-01 DISASSEMBLY

1. REDUCTOR COVER REMOVAL.

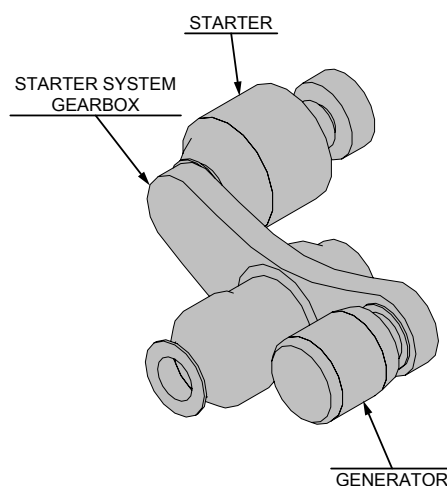
- a) REMOVE UPPER COVER RC-001.
- b) REMOVE LOWER COVER RC-002.
- c) REMOVE 10 NUTS (NUT KOR-10).



- d) DETACH REDUCTOR MODULE M-001.

2. TURBINE SYSTEMS DISASSEMBLY.

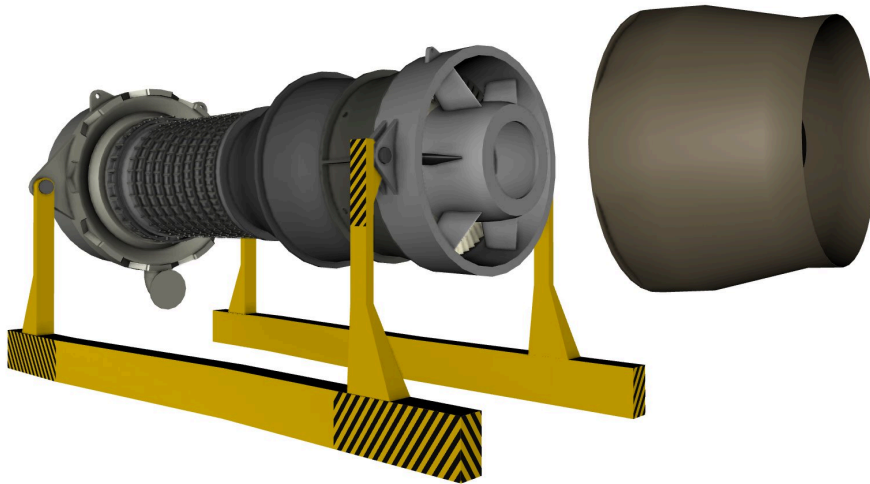
- a) DETACH STARTER M-007.



- b) DETACH FUEL PIPELINE M-004-004 AND FUEL NOZZELS M-004-005.
- c) DETACH COOLING SYSTEM PIPELINE T-001.

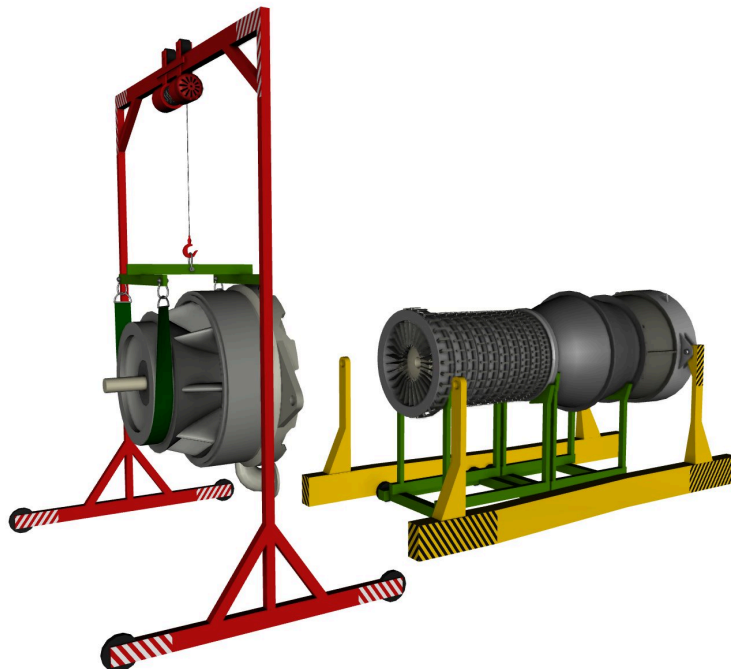
3. INLET/OUTLET NOZZLES DISASSEMBLY.

- a) REMOVE FRONT PART OF INLET NOZZLE IN-001.
- b) REMOVE REAR PART OF INLET NOZZLE IN-002.
- c) [REMOVE OUTLET NOZZLE MODULE M-006.](#)

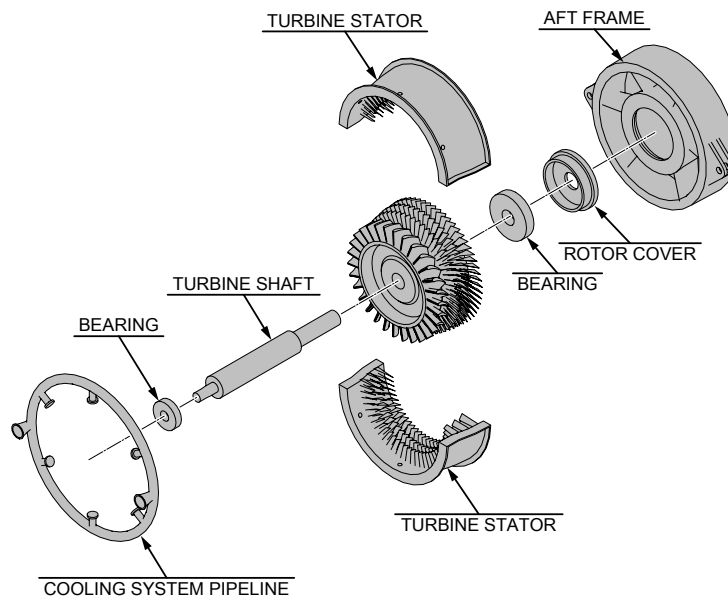


4. FORWARD SUMP DISASSEMBLY.

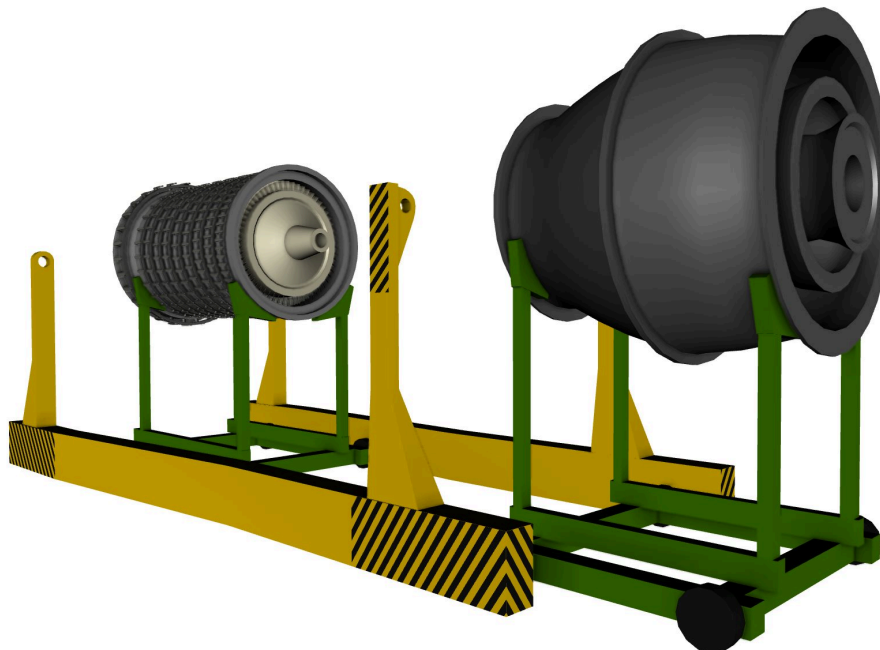
- a) PLACE WAY UNDER COMPRESSOR.
- b) PLACE WAY UNDER COMBUSTION CHAMBER.
- c) [DETACH FORWARD SUMP M-002.](#)



5. TURBINE MODULE DISASSEMBLY.
- a) PLACE WAY UNDER TURBINE.
 - b) DETACH AFT FRAME M-005-003.
 - c) [DETACH LOW PRESSURE TURBINE \(LPT\).](#)



- d) REMOVE LPT UPPER CASE.
 - e) REMOVE LPT ROTOR M-005-001.
6. COMBUSTION CHAMBER DISASSEMBLY.
- a) [DETACH COMBUSTION CHAMBER M-004.](#)



7. COMPRESSOR MODULE DISASSEMBLY.

- a) DISASSEMBLE STATOR BLADES CONTROL SYSTEM.
- b) REMOVE COMPRESSOR UPPER CASE M-003-002 WITH BLADES.
- c) **REMOVE COMPRESSOR ROTOR M-003-003.**

